

Review Article

Dental Applications of Calcium Orthophosphates (CaPO₄)

Sergey V Dorozhkin*

Kudrinskaja sq. 1-155, Moscow 123242, Russia

Abstract

Dental caries, also known as tooth decay or a cavity, remains a major public health problem in the most communities even though the prevalence of disease has decreased since the introduction of fluorides for dental care. In addition, there is dental erosion, which is a chemical wear of the dental hard tissues without the involvement of bacteria. Besides, there are other dental losses, which may be of a medical (decay or periodontal disease), age (population aging), traumatic (accident) or genetic (disorders) nature. All these cases clearly indicate that biomaterials to fill dental defects appear to be necessary to fulfill customers' needs regarding the properties and the processing of the products. Bioceramics and glass-ceramics are widely used for these purposes, as dental inlays, onlays, veneers, crowns or bridges. Among them, calcium orthophosphates (abbreviated as CaPO₄) have some specific advantages over other types of biomaterials due to a chemical similarity to the inorganic part of both human and mammalian teeth's and bones. Therefore, CaPO₄ (both alone and as constituents of various complex formulations) are used in dentistry as both fillers and implantable scaffolds. This review provides a brief knowledge on CaPO₄ and describes in details current state-of-the-art on their applications in dentistry and dentistry-related fields. Among the recognized dental specialties, CaPO₄ are most frequently used in periodontics; however, the majority of the publications on CaPO₄ in dentistry are devoted to unspecified "dental" fields.

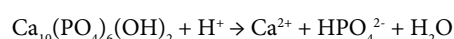
Keywords: Hydroxyapatite; Calcium Orthophosphates; Dentistry; Oral; Fillers; Scaffolds; Anti-caries; Bioceramics

Introduction

Dental caries, also known as tooth decay or a cavity, is an infectious disease (usually of bacterial origin), which causes demineralization and destruction of teeth. If left untreated, the disease can lead to pain, tooth loss and infection. Historically, this disease is very old and it is not exclusive of the human species. Namely, evidences of dental lesions compatible with caries have been observed in creatures as old as Paleozoic fishes (570-250 million years), Mesozoic herbivores dinosaurs (245-65 million years), prehomines of the Eocene (60-25 million years), as well as in Miocenic (25-5 million years), Pliocenic (5-1.6 million years) and Pleistocenic animals (1.6-10000 million years). Nowadays caries is also detected in bears and other wild animals, as well as it is common in domestic animals [1]. Back to humans, dental caries has been detected in various epochs and societies throughout the world [2-9]. Even though in most developed countries the prevalence of the disease has decreased since the introduction of fluorides for dental care, dental caries remains a major public health problem.

Very schematically, dental caries occurs as this. As the most highly mineralized structure in vertebrate bodies, dental enamel is composed of numerous nano-dimensional needle-like crystals of ion-substituted Calcium Orthophosphates (abbreviated as CaPO₄) with the apatitic structure (so called "biological apatite"), which are bundled in

parallel ordered prisms or rods to ensure unique mechanical strength, remarkable hardness and biological protection. Nevertheless, all types of teeth possess some porosity allowing fluids beneath their surface. Organic (mainly, lactic and acetic) acids, produced by dental plaque cariogenic bacteria (such as *Streptococcus mutans* and *Lactobacillus*) from fermentable carbohydrates of sugar or from the remaining food debris, initiate the disease. When the sufficient quantity of acids is produced, so that the solution pH drops below ~ 5.5 (a critical pH), saliva and plaque fluids cease to be saturated with calcium and orthophosphate ions. Thus, dental enamel begins to be demineralized (dissolved) and the aforementioned pores become larger (Figure 1a). The demineralization process can be described with a simplified chemical reaction:



As seen from this reaction, enamel dissolution increases concentrations of both the major ions (calcium and acid orthophosphate) and the minor ones (magnesium, bicarbonate (not shown)) in the local microenvironment of the caries lesions, leading to the formation of various types of acidic CaPO₄ [10-12]. Simultaneously, H⁺ ions are consumed which results in pH increasing. Due to both accumulating of the aforementioned ions in saliva and pH increasing, the demineralization processes of teeth slow down. Several models were developed to simulate dental caries [13-16].

Luckily, saliva has some restorative functions, acting not only as a buffer, to reduce the acidity caused by plaque bacteria, but also as the constant source of soluble ions of calcium and orthophosphate [11,17]. Therefore, upon neutralization of the plaque acids, CaPO₄ complexes from saliva diffuse back into the channels between the depleted enamel rods, replenishing the supply of the dissolved ions (Figure 1b). Consequently, the surface of dental tissues is remineralized. Additional application of toothpastes, mouthwashes, mouth rinses, tooth mousses, etc., assists the remineralization. Thus, under normal circumstances, enamel demineralization is compensated by

Citation: Dorozhkin SV. Dental Applications of Calcium Orthophosphates (CaPO₄). J Dent Res. 2019; 1(2): 1007.

Copyright: © 2019 Sergey V Dorozhkin

Publisher Name: Medtext Publications LLC

Manuscript compiled: March 11th, 2019

***Corresponding author:** Sergey V Dorozhkin, Kudrinskaja sq. 1-155, Moscow 123242, Russia, E-mail: sedorozhkin@yandex.ru

its remineralization. This dynamic process takes place more or less continually and equally in a favorable oral environment. However, when the demineralization exceeds the combined abilities of saliva, toothpastes, mouthwashes, mouth rinses, tooth mousses, etc. to remineralize, the dental tissues are progressively dissolved and finally break down, producing dental caries, which look like cavities and/or holes in the teeth [18]. An example of cariogenic teeth is shown in Figure 2.

In addition to dental caries, there is dental erosion, which is a chemical wear of the dental hard tissues without the involvement of bacteria resulting in bulk mineral loss with a partly demineralized surface of reduced micro-hardness. Clinical features are loss of surface structures with shallow lesions on smooth surfaces and cupping and flattening of cusps; already in early stages, coronal dentine often is exposed. Frequently, it is caused by acid-containing drinks and/or food. The acids that cause erosion are rather strong with an average pH of ~ 2 for the colas, ~ 2 - 2.5 for citrus fruits and ~ 1 for gastric contents. A repeated exposure leads to surface demineralization and, therefore, softening, while the softened surface is susceptible to loss by abrasion from food or a toothbrush. Repeated cycles of acid exposure lead to smooth, cupped out cavities. Palatal surfaces of maxillary anterior teeth appear to be the most susceptible erosion places, although, other teeth are also affected. Currently, dental erosion is considered as one of the main tooth pathologies able to cause patient discomfort after periodontal diseases and caries [12,19,20]. Filling with artificial materials is a conventional treatment to repair damaged places. However, secondary caries frequently arise at the interfaces between the tooth and foreign materials, which always require restoration replacement [21].

Furthermore, there are other reasons why people need restorative dental biomaterials, such as inlays, onlays, crowns, veneers or bridges. The causes may be of a medical (decay or periodontal disease), age (population aging), traumatic (accident) or genetic (disorders) nature. All these causes adversely affect masticator efficiency, language function, facial esthetics and even the psychological health. Still other patients simply wish to change their smile to improve an appearance of their own. Since no one wants to cover up one's mouth when smiling, the demand for esthetic, tooth-colored ("invisible") restorations permanently increases [22]. Finally, there are dental abrasion and dental attrition processes. The former is defined as a mechanical removal of hard tissues by the repeated introduction of foreign bodies into the oral cavity that are in contact with the teeth, while the latter is a physiological wearing out of dental hard tissues through tooth to tooth contact, without an intervention of foreign substances [12].

Therefore, due to their visibility, the restorative dental biomaterials are fundamentally different from artificial implants for bone replacements (reviewed in Refs. [23,24]). The greatest driving force to develop biomaterials for dental restoration is to fulfill the customers' (patients, dentists and dental technicians) needs. In addition to the esthetic requirements, pressures from the environmental regulations and public apprehension are on the verge of eliminating dental amalgam as a practical and inexpensive restorative filling material [25]. Thus, by the late of 1990's, amalgam use in several European countries was phased out. Consequently, development of metal-free restorations with properties close to natural teeth (with respect to translucency, color and abrasive behavior) or even better mechanical properties and better durability than natural teeth has been a great

challenge for many years [22].

Briefly, all restorative dental biomaterials must meet the following basic requirements [22]:

- They must be durable and biocompatible;
- Their optical characteristics (gloss, translucency and color, in particular) must be comparable to those of natural teeth;
- Their mechanical properties (strength and toughness) must meet the requirements of the indication range (namely, the required strength of an inlay is lower than that of a dental bridge);
- Their wear behavior must be similar to that of natural teeth.

In addition, they should be easily implantable or injectable, which is a critical requirement for any medical application.

Hence, a selecting problem of the appropriate biomaterials arises. When all material characteristics and clinical factors are considered, bioceramics offer, perhaps, the best choice for a metal-free dentistry. Namely, bioceramics possess the excellent chemical durability, wear resistance, biocompatibility, environmental friendliness and esthetics. The bioceramic restorations can be used in situations such as treatments of primary caries where inlays can be applied without a more excessive removal of tooth structure that is associated with amalgam. Besides, bioceramic onlays or crowns can also be used in place of large amalgam restorations. However, the widespread use of all-ceramic restorations has been hindered by concerns related to marginal fracture resistance and clinical longevity. Therefore, the goal of dental bioceramics research is to produce all-ceramic dental restorative systems that utilize the known advantages of ceramic materials and minimize the existing disadvantages [26].

Due to the chemical composition, CaPO_4 belong to bioceramics but they have some specific advantages due to a chemical similarity to the inorganic part of both human and mammalian bones and teeth. This makes CaPO_4 the only bioceramics potentially applicable for remineralization of dental surfaces [27]. Owing to these known similarities, dentists have been using CaPO_4 in clinical practice for over a century. Namely, Dr. Junius E. Cravens (1844 - 1920) from USA proffered creative concepts in pulp capping in the 1870's. He had the opinion that would be the best to keep the pulp vital. Therefore, Cravens used a CaPO_4 powder, which was mixed with lactic acid to low viscosity. The result was a soluble calcium lactic orthophosphate, which was applied onto the exposed pulp tissue [28]. This pulp-capping agent was brought to the market by the S.S. White Company with the trade name "Lacto-Phosphate of Lime" (Figure 3) [29].

The available CaPO_4 , their standard abbreviations and solubility values are listed in Table 1 [30,31]. Additional details on CaPO_4 , their properties and applications are available in the special monographs on the subject [32-34]. The objective of this overview is to provide current state-of-the-art on CaPO_4 applications in dentistry and dentistry-relevant fields.

General Definitions and Knowledge

According to Wikipedia, the free encyclopedia: "Dentistry is the branch of medicine that is involved in the study, diagnosis, prevention, and treatment of diseases, disorders and conditions of the oral cavity, maxillofacial area and the adjacent and associated structures and their impact on the human body. The American Dental Association recognizes nine dental specialties: public health dentistry,

endodontics, oral and maxillofacial pathology, oral and maxillofacial radiology, oral and maxillofacial surgery, orthodontics, pediatric dentistry, periodontics, prosthodontics, and general dentistry. There are other dental niches such as oral medicine, dental aesthetics, dental implantation, and orofacial pain and temporomandibular disorders, some of them are recognized as dental specialties in other countries. In the European Union, all member states must recognize the specialties of orthodontics and oral and maxillofacial surgery” [35].

Now it is necessary to describe briefly all dental specialties and determine in which of them CaPO_4 are used. According to Wikipedia: “Dental public health is involved in the assessment of dental health needs and improving the dental health of populations rather than individuals. One of the controversial subjects relating to dental public health is fluoridation of drinking water” [36]. A search in Scopus database has been performed for papers containing in the title a combination of terms (keywords) “public health dentistry” + “apatite” and “public health dentistry” + “calcium phosphate”. Zero publications have been found in both cases (Table 2). Thus, this direction has nothing in common with CaPO_4 . Endodontics (from the Greek ἐνδο (endo) “inside” and ὀδούς (odous) “tooth”) deals with the tooth pulp and tissues surrounding roots of teeth. If the pulp (this is the only vascularized connective tissue of teeth, which contains nerves, arterioles, venules, lymphatic tissue and fibrous tissue) becomes diseased or injured, endodontic treatment is required to save the tooth [37]. The results of a similar search (Table 2) revealed that CaPO_4 are used rarely in endodontics. Oral and maxillofacial pathology, radiology and surgery represent “the study, diagnosis, and sometimes the treatment of oral and maxillofacial related diseases”, “the study and radiologic interpretation of oral and maxillofacial diseases” and “extractions, implants, and facial surgery”, respectively [38]. Only surgery appears to deal with CaPO_4 very rarely (Table 2). Furthermore, within these three dental specialties, one needs to differentiate between “oral” and “maxillofacial” terms. The former term is relevant to the subject of this review, while the latter one is undoubtedly irrelevant, since it deals with treatment of the surrounding bones. Various CaPO_4 -based formulations have been proposed for reconstruction of the contour and discontinuity defects in maxillofacial surgery [39-52]; however, this subject belongs to bone grafts [23,24]. Orthodontics, formerly orthodontia (from Greek ὀρθός (orthos) “straight, or proper, or perfect” and ὀδούς (odous) “tooth”) is the first specialty of dentistry that is concerned with the study and treatment of malocclusions (improper bites), which may be a result of tooth irregularity, disproportionate jaw relationships, or both [53]. CaPO_4 are used rarely in orthodontics (Table 2). Pediatric dentistry (formerly pedodontics (American English) or paedodontics (Commonwealth English)) is the branch of dentistry dealing with children from birth through adolescence. It places special importance in preventing tooth decay. Additionally, pediatric dentists work toward the maintenance of primary teeth (baby teeth) until they are naturally lost. It is irrelevant to the CaPO_4 subject (Table 2). Periodontics (also Periodontology, from Greek περί (peri) “around” and ὀδούς (odous) “tooth”) is the specialty of dentistry that studies supporting structures of teeth, as well as diseases of periodontium (these are specialized tissues investing and supporting teeth, including cementum, periodontal ligament, alveolar bone and gingiva, characterized by the loss of support around teeth) and conditions that affect them. Although CaPO_4 are frequently used in periodontics (Table 2); in fact, they are applied to treat alveolar bones, which, again, is another story [23,24]. Prosthodontics (from Greek πρόσθεσις (prosthesis) “addition”

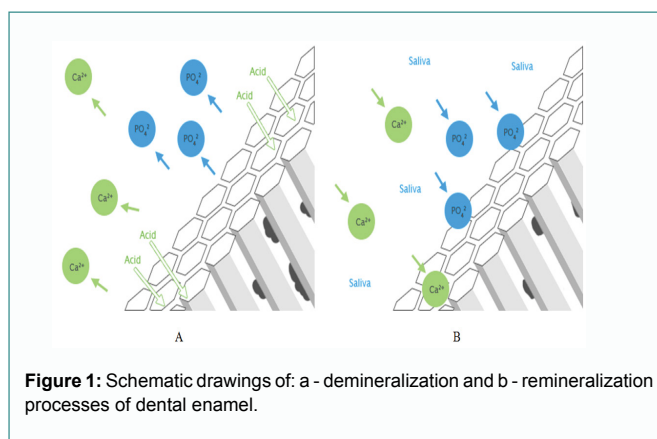


Figure 1: Schematic drawings of: a - demineralization and b - remineralization processes of dental enamel.



Figure 2: Dental caries (teeth decay).

LACTO-PHOSPHATE OF LIME.

This article has been recommended by Dr. J. E. Cravens for the treatment of sensitive dentine, and to promote deposition of dentine in exposure of pulps. Put up in half-ounce bottles, in the form of paste, ready for application. Price..... 50 cents.

SAMUEL S. WHITE.

Figure 3: An advertisement of the S.S. White company for “Lacto-Phosphate of Lime” 1873. Reprinted from Dent. Cosmos 1873, 15, 683.

and ὀδούς (odous) “tooth”), also known as dental prosthetics or prosthetic dentistry, is a dental specialty pertaining to the diagnosis, treatment planning, rehabilitation and maintenance of the oral function, comfort, appearance and health of patients with clinical conditions associated with missing or deficient teeth and/or oral and maxillofacial tissues using biocompatible substitutes [54]. CaPO_4 are used very rarely in prosthodontics (Table 2). In addition, similar searches in Scopus database using key words “dental”, “dentistry”, “oral”, “stomatology” and “caries” combined with “apatite” or “calcium phosphate” have been performed (Table 2, the bottom lines).

Brief Information on Current Biomedical Applications of CaPO_4

Due to a chemical similarity to the inorganic part of normal calcified tissues (bones, teeth and deer antlers) of mammals, artificially prepared CaPO_4 possess good biocompatibility, bioactivity and osteoconductivity [30-34]. These properties of CaPO_4 are extensively used in medicine for repairing or replacement of injured

Table 1: Existing calcium orthophosphates (CaPO_4) and their major properties [30,31].

Ca/P molar ratio	Compounds and their typical abbreviations	Chemical formula	Solubility at 25°C, $-\log(K_s)$	Solubility at 25°C, g/L	pH stability range in aqueous solutions at 25°C
0.5	Monocalcium phosphate monohydrate (MCPM)	$\text{Ca}(\text{H}_2\text{PO}_4)_2 \cdot \text{H}_2\text{O}$	1.14	~18	0.0-2.0
0.5	Monocalcium phosphate anhydrous (MCPA or MCP)	$\text{Ca}(\text{H}_2\text{PO}_4)_2$	1.14	~17	[c]
1	Dicalcium phosphate dehydrate (DCPD), mineral brushite	$\text{CaHPO}_4 \cdot 2\text{H}_2\text{O}$	6.59	~0.088	2.0-6.0
1	Dicalcium phosphate anhydrous (DCPA or DCP), mineral monetite	CaHPO_4	6.9	~0.048	[c]
1.33	Octacalcium phosphate (OCP)	$\text{Ca}_8(\text{HPO}_4)_2(\text{PO}_4)_4 \cdot 5\text{H}_2\text{O}$	96.6	~0.0081	5.5-7.0
1.5	α -Tricalcium phosphate (α -TCP)	$\alpha\text{-Ca}_3(\text{PO}_4)_2$	25.5	~0.0025	[a]
1.5	β -Tricalcium phosphate (β -TCP)	$\beta\text{-Ca}_3(\text{PO}_4)_2$	28.9	~0.0005	[a]
1.2-2.2	Amorphous calcium phosphates (ACP)	$\text{Ca}_x\text{H}_y(\text{PO}_4)_z \cdot n\text{H}_2\text{O}$, $n=3-4.5$; 15-20% H_2O	[b]	[b]	~ 5-12 [d]
1.5-1.67	Calcium-deficient hydroxyapatite (CDHA or Ca-def HA) ^[e]	$\text{Ca}_{10-x}(\text{HPO}_4)_x(\text{PO}_4)_{6-x}(\text{OH})_{2-x}$ ($0 < x < 1$)	~85	~0.0094	6.5-9.5
1.67	Hydroxyapatite (HA, HAp or OHAp)	$\text{Ca}_{10}(\text{PO}_4)_6(\text{OH})_2$	116.8	~0.0003	9.5-12
1.67	Fluorapatite (FA or FAp)	$\text{Ca}_{10}(\text{PO}_4)_6\text{F}_2$	120	~0.0002	7-12
1.67	Oxyapatite (OA, OAp or OXA) ^[f] , mineral voelckerite	$\text{Ca}_{10}(\text{PO}_4)_6\text{O}$	~69	~0.087	[a]
2	Tetracalcium phosphate (TTCP or TetCP), mineral hilgenstockite	$\text{Ca}_4(\text{PO}_4)_2\text{O}$	38-44	~0.0007	[a]

^[a]These compounds cannot be precipitated from aqueous solutions.

^[b]Cannot be measured precisely. However, the following values were found: 25.7 ± 0.1 (pH=7.40), 29.9 ± 0.1 (pH=6.00), 32.7 ± 0.1 (pH=5.28). The comparative extent of dissolution in acidic buffer is: ACP >> α -TCP >> β -TCP > CDHA >> HA > FA.

^[c]Stable at temperatures above 100°C

^[d]Always meta stable.

^[e]Occasionally, it is called “precipitated HA (PHA)”.

^[f]Existence of OA remains questionable.

Table 2: The amount of publications containing the selected keywords in their titles, found in Scopus database.

Dental Specialty	Number of Publications		
	Apatite	Calcium Phosphate	Cumulative
Public health dentistry	0	0	0
Endodontics	23	14	37
Oral and maxillofacial pathology	0	0	0
Oral and maxillofacial radiology	0	0	0
Oral and maxillofacial surgery	5	2	7
Orthodontics	14	36	50
Pediatric dentistry	0	0	0
Periodontics	219	118	337
Prosthodontics	9	0	9
Additional Keywords			
Dental	427	249	676
Dentistry	25	19	44
Oral	80	95	175
Stomatology	5	2	7
Caries	39	96	135
Total	846	631	1477

* - duplications are possible.

or damaged bones and teeth. Since the diverse biomedical applications require different formulations, configurations and/or shapes, the biomedically relevant CaPO_4 are produced in various physical forms, such as: powders, particles, granules, dense blocks, porous scaffolds, self-setting formulations, suspensions, non-hardening pastes, implant coatings, as well as composite components of different origin (natural, biological or synthetic) often with the specific shapes, such as implants, prostheses or prosthetic devices [23,24,30-34,55,56]. In view of the fact that several dental specialties deal with an invasion into and/or treatment of the surrounding bones (such as, bone drilling to insert an implant), in principle, all the aforementioned forms, formulations, configurations and shapes of CaPO_4 might be applicable to the dentistry field as well.

CaPO_4 for Dental Caries Prevention and in Dentifrices

Traditionally, caries prevention strategies are focused on reducing bacterial growth, neutralizing of oral acids and teeth remineralization. Among them, only the third strategy appears to deal with the CaPO_4 subject. Briefly, the teeth remineralization is a process in which dissolved CaPO_4 minerals are returned to the molecular structure

of the teeth themselves (Figure 1b). To reduce dental caries by performing remineralization, systemic and/or topical fluoridation of water is commonly used [27]. In addition, various ion-delivering agents are used in the form of dentifrices, toothpastes, mouthwashes, mouth rinses, chewing gums, etc. Many of these remineralizing agents contain CaPO_4 [58]. This is because the focus in caries research has shifted to development of methodologies for detection of the early stages of caries lesions and non-invasive treatment of these lesions. For example, in the presence of calcium and orthophosphate ions, topical fluoride ions promote formation of FA (which is the least soluble compound among all known types of CaPO_4 , Table 1) in dental enamel. This property of fluorides has been known since, at least, 1956 [59]. However, to form one unit cell of FA, 10 calcium and 6 orthophosphate ions are required for every 2 fluoride ions. Hence, on topical application of fluoride ions, the availability of calcium and orthophosphate ions can be the limiting factor for net enamel remineralization to occur and this is highly exacerbated under the xerostomic (i.e., a dry mouth) conditions [27].

Now, let me describe the applications of CaPO_4 in dentifrices. According to Wikipedia: "Dentifrice are agents used along with toothbrush to clean and polish natural teeth. They are supplied as paste, powder, gel or liquid form." [60]. To the best of my findings, the earliest study dealing with an application of CaPO_4 as a dentifrice was presented at the 23rd general meeting of the International Association for Dental Research (held in Chicago, IL, May 27, 1945) and the abstract of that presentation was published shortly afterwards [61]. Since then, numerous studies devoted to various applications of CaPO_4 in dentifrices have been published [62-102]. A number of such formulations also contains fluorides [62,63,69,70,73-76,78,83,87,97-102].

Toothpastes

CaPO_4 containing toothpastes were found to promote a partial remineralization of the demineralized enamel [80,81,83-85,87-90,95-98], as well as depending on the addition of other constituents they also can possess some whitening effect [77,79,99] and reduce tooth sensitivity [84,91,102]. For example, the polishing and whitening properties of HA-containing toothpastes were investigated in a combined study [77]. The polishing properties were evaluated by means of artificial teeth by polishing with different toothpastes, while the brightening and whitening properties were examined in volunteers using two colorimeters with two specially made fiberscope's. The results revealed that addition of HA to the toothpaste did not alter its polishing properties, while it did result in a marked increase in tooth whitening. It was also found that the brightening and whitening properties increased as the amount of HA in the toothpaste increased. Thus, HA-containing toothpaste appeared to be effective at whitening teeth and whitening was not due to their polishing effect on tooth surface [77]. The whitening properties of HA-containing toothpastes were also found by other researchers [79, 99].

Further, it is worth mentioning on a randomized study with 181 children (92 boys, 89 girls) from different Japanese schools over a period of 3 years [67]. After lunch, the children brushed their teeth under supervision with a toothpaste containing 5% HA and a control group with a paste without HA. Yearly controls of the DMFT (number of decayed, missing and filled teeth due to caries) index were diagnosed as well as the caries incidence on newly erupted teeth. The DMFT index appeared to be significantly deeper in the HA-containing toothpaste group, while the incidence for caries in newly

erupted teeth was significantly lower if compared to the control [67].

Besides, dentifrices containing a combination of Monofluorophosphate (MFP) with a DCPD abrasive were evaluated in a variety of in vivo tests [69]. MFP with silicon dioxide abrasive at the equivalent fluoride concentration was used for comparison. The data indicated that DCPD was more effective than silica in preventing pH drop of plaque. Toothpaste containing MFP + DCPD was significantly more effective than an MFP + silica toothpaste. In addition, a toothpaste containing ^{45}Ca radiolabeled DCPD was applied topically in rats' teeth. The results showed that ^{45}Ca was incorporated into the enamel with a concomitant reduction in enamel solubility. In a rat caries study using MFP + DCPD, matching placebo and MFP + silica, the MFP + DCPD dentifrice showed a significantly greater reduction in smooth surface caries. These dentifrices were also tested in an in situ human model for fluoride uptake in artificial root caries lesions where MFP + DCPD provided a significantly higher fluoride uptake than MFP + silica. A second in situ study in humans evaluated the same dentifrices MFP + DCPD increased salivary plaque calcium and fluoride. These results of laboratory, animal and in situ studies taken together indicated that the MFP + DCPD combination was the unique one in providing extra super saturation in saliva and plaque with concomitant enhanced anticaries efficacy [69].

Thus, due to the aforementioned successful cases of CaPO_4 addition to toothpastes, such toothpastes are commercially produced worldwide (Table 3). As seen from the Table 3, toothpastes for both human and animals are available. One should note that HA and ACP are added to toothpastes to provide remineralization properties, while DCPD and DCPA are added to toothpastes as abrasives to provide a gentle polishing action.

To finalize this section, one should mention on the studies, in which addition of CaPO_4 to toothpastes did not show any positive influence on enamel and/or dentin demineralization/remineralization properties [103].

Chewing gums

Except of toothpastes, CaPO_4 are added to chewing gums to reduce dental caries [104-123]. In the vast majority of cases, a positive effect was noticed. Namely, to evaluate chewing gums as a vehicle to increase salivary mineral saturation levels and enhance salivation, both MCPM and the equimolar mixture of TTCP with DCPA were chosen as experimental chewing gum additives [109]. Each subject chewed a commercial sugar-free bubble gum (control) for 16 min or the same gum to which 5 wt% of MCPM or TTCP + DCPA mixture had been added. Both experimental gums were found to increase significantly the concentrations of calcium and orthophosphate ions in saliva during the 16 minute period even more than with a previously evaluated gum that contained DCPD. The degree of saturation of tooth mineral was significantly increased by both experimental gums, with a greater increase being produced by the TTCP + DCPA gum. The MCPM gum produced a significantly greater saliva flow and a lower salivary pH than did the control and TTCP + DCPA gums. The results suggested that the experimental gums could be useful for promoting remineralization in general and for inducing salivation in xerostomic patients [109].

In other studies, both sugar-free gums (control) and casein phosphopeptide-ACP (CPP-ACP) containing gums were chewed for either 20 min periods, four times a day or 5 min periods, seven times a day. Microradiography and computer assisted densitometric

image analysis demonstrated that, regardless the gum type and chewing duration (e.g., 20 min or 5 min), the nano-dimensional CPP-ACP complexes produced a dose-related remineralization of enamel subsurface lesions in situ. The gums containing 18.8 mg and 56.4 mg of the nano-dimensional CPP-ACP complexes, chewed for 20 min, four times per day for 14 days, increased enamel subsurface remineralization by 101% and 151%, respectively, relative to the control sugar-free gums. Microradiographs of the enamel lesions before and after remineralization showed that the nano-dimensional CPP-ACP complexes promoted remineralization throughout the body of the lesion. Electron microprobe wavelength dispersive spectrometric analyses of sections of the remineralized enamel indicated that the mineral deposited was apatite with a higher Ca/P ratio than that in the stoichiometric HA. Acid challenge of the enamel remineralized by the nano-dimensional CPP-ACP complexes in situ showed that the remineralized apatite was more resistant to acid challenge than the normal calcium-deficient carbonated tooth enamel. Thus, the clinical trials of CPP-ACP-containing sugar-free chewing gums demonstrated that these gums significantly slowed progression of caries and enhanced regression of caries compared with the control sugar-free gums [112-116].

Teeth remineralization

In general, remineralization of teeth can be defined as the process in which calcium and orthophosphate ions are supplied from a source external to teeth to promote their deposition into crystal voids in demineralized enamel, to produce net mineral gain [124]. The earliest found paper on a possibility of a remineralization phenomenon occurring in caries was published in 1912 [125], while that using CaPO_4 for rehardening was performed in 1961 with solutions, contained dissolved ions of calcium and orthophosphate [126], followed by the set of the studies performed by Silverstone [127,128], as well as ten Cate and Arends [129-132].

The early attempts to use CaPO_4 for remineralization of dental surface were unsuccessful due to their low solubility, particularly in the presence of fluoride ions. Namely, the insoluble CaPO_4 cannot be applied easily; they do not localize effectively on the tooth surface and require an acidic environment for solubility levels sufficient to produce ions capable to diffuse into enamel subsurface lesions. Furthermore, due to the intrinsic insolubility of CaPO_4 at the physiological pH values, soluble calcium and orthophosphate ions can only be used at very low concentrations. Besides, the soluble ions of calcium and orthophosphate are neither substantially incorporated into the dental plaque, nor localized at the tooth surface to produce the effective concentration gradients to drive diffusion into the subsurface enamel [27].

Nevertheless, studies on teeth remineralization keep going. For example, a remineralization potential of HA itself for caries lesion treatment was investigated [68]. Previously demineralized enamel blocks were immersed into an aqueous solution of sludgy HA at 37°C for 55 hours, followed by 24 hours washing with synthetic saliva and another group was washed only with synthetic saliva. Artificial caries lesions were remineralized slightly by immersion into artificial saliva but significant acceleration of remineralization was observed in the sludgy HA group [68]. Positive results were also obtained in other studies [66,133-146]. Namely, in 2005, a study on the potential of HA in repairing enamel lesions was published. In that study, a HA-containing paste demonstrated an enamel-repairing effect that was confirmed by transmission electron microscopy and atomic force

microscopy [133]. The results of an in situ study showed a potential accumulation of HA from a mouthwash in the dental pellicle; however, no significant erosion protection was found from this accumulation [146]. Furthermore, remineralization of caries lesions could be performed by supersaturated solutions [147-149] and/or gels [150-158] containing dissolved ions of calcium and orthophosphate. In addition, supersaturated by CaPO_4 mouth rinses were found to experience a significant increase in reversals of caries in high-risk for caries patients due to xerostomia (salivary hypofunction) [159]. A remineralization potential of sport drinks, containing nano-sized HA particles, was also studied [160,161].

More complicated formulations, such as CaPO_4 -loaded liposomes combined with amelogenin-inspired oligopeptides [162], as well as biocomposites of nano-dimensional ACP with various polymeric compounds [163-166] have been also developed to promote remineralization of dental enamel. Thus, CaPO_4 appear to be the chemicals able to reduce dental caries at the early stages. However, studies performed by using atomic force microscopy nano-indentation technique revealed that previously demineralized samples of dental enamel further exposed to remineralizing solutions did show a crystalline layer of CaPO_4 formed on their surface. Unfortunately, the re-precipitated deposits of CaPO_4 always consisted of loosely packed crystals and did not protect the underlying enamel from a subsequent acid attack. Furthermore, these surface deposits were completely removed by either a toothbrush or a short exposure to an erosive acidic solution [167-170]. In this context, it should be emphasized that the term “remineralization”, which is often misused in the literature, should imply the process of mineral growth that goes hand in hand with a strengthening effect of the weakened enamel surface. Since no strengthening of an exposure to remineralizing solutions was observed, it might be considered that no “passive mineralization” was found (in spite of the real evidence of the re-precipitated surface deposits of CaPO_4) [167,169,170]. Further details on the remineralization attempts of teeth are available in the topical reviews [171-173].

To finalize this section, one should mention on a new technology called “electrically assisted enhanced remineralization” developed by Reminova Ltd. (Scotland, UK), which relies on the use of a tiny electrical current of a few micro Amps to reverse tooth decay by boosting remineralization. Although the details are not disclosed, the science work behind this process is described as follows: “It is a two-step process. Firstly, a lesion in the enamel is identified by a dentist and conditioned with a quick and simple set of washes to remove decay and exogenous materials that may have built up within the decayed lesion. Some natural minerals are applied locally to the lesion and then a tiny electric field is used to help drive the minerals into the deepest parts of the now cleaned-out lesion. The minerals pack closely together and start precipitating (hardening) onto the existing enamel structure. Very quickly the lesion will fill and the enamel is strong and healthy again. Because it is based on a natural process, it's understood how minerals (Calcium and phosphate molecules) go back into tooth enamel, and how they join and form part of the enamel.” Obviously, either CaPO_4 compounds or Ca- and PO_4 -containing constituents are used as “some natural minerals” in this technology.

Dentin hypersensitivity treatments

As written in Wikipedia, the free encyclopedia: Dentin Hypersensitivity (abbreviated to DH or DHS and also termed sensitive dentin, dentin sensitivity, cervical sensitivity and/or cervical

hypersensitivity) is dental pain which is sharp in character and of short duration, arising from exposed dentin surfaces in response to stimuli, typically thermal, evaporative, tactile, osmotic, chemical or electrical and which cannot be ascribed to any other dental disease [174]. Dentin hypersensitivity is a frequently reported oral pain condition, which is mostly diagnosed at the buccal surfaces of teeth, where enamel is missing due to erosion, abrasion and/or attrition. Contrary to enamel, which is dense and contains a small amount of pores, dentine has a great number of tiny tubes ("tubules") that lead to the nerve and are filled with fluids. However, until about the third or fourth decade of life in healthy individuals, the surface of dentin is not exposed and the tubules are sealed. When a tooth loses its protection from gum recession and/or tooth enamel wear, these tubules are exposed to the outside, allowing external stimuli to reach the nerve endings. Therefore, even mild external stimuli such as hot or cold foods and beverages can cause a change in fluid movement, which causes the nerve endings to react in response, triggering a short but sharp pain (Figure 4a).

There are several strategies to prevent dentin hypersensitivity in oral care, including occlusion of dentin tubules with different particulate materials (arginine/calcium carbonate, calcium sodium phosphosilicate, strontium fluoride, etc.) or nerve desensitization with agents such as potassium salts [175]. However, all these cases are beyond the scope of this review. Back on the topic, some types of CaPO_4 were found to be able to treat this disease as well [84,91,120,176-185]. For example, already in 1987, the results of a clinical study of 140 patients with hypersensitive teeth, in which HA-containing pastes with different particle sizes of HA were used for treatment, were published. A paste containing 2 μm sized HA particles appeared to be more effective than that containing 6 μm sized HA particles and 90% of all patients experienced relief from tooth hypersensitivity after 3 days to 5 days [176]. In another study, HA-containing toothpaste was compared with positive control toothpastes. That study demonstrated that the HA-containing toothpaste was similarly effective in reducing dentine hypersensitivity with pre-existing benchmark toothpastes [84]. Positive results were also obtained with both HA-containing Renamel After-Bleach toothpaste [91] and an undisclosed nano-HA, potassium nitrate, sodium monofluorophosphate and antioxidants-containing toothpaste [182]. In another study, HA-treated teeth showed statistically significant reduction in hypersensitive symptoms compared to the control groups and the authors concluded that HA showed "definite potential as an effective and permanent desensitizer when used as an in-office procedure" [181]. Furthermore, a CaPO_4 precipitation method was once tried as a treatment for dentin hypersensitivity using vital teeth of beagle dogs. The results revealed that dentin tubules were occluded homogeneously and completely with an apatitic mineral after application of the CaPO_4 precipitation in vital teeth [179]. A commercial self-setting formulation TEETHMATE™ DESENSITIZER (Kuraray Noritake Dental Inc., Japan), consisting of a mixture of DCPA + TTCP + some fluoride-free additives, which formed CDHA precipitates upon exposure to saliva, appeared to be able to occlude open dentinal tubules and, by this way, acted as an effective desensitizer compound [184-187]. Nevertheless, there are similar formulations with fluorides [188]. In addition, there are commercially produced dental gel Relief ACP (Discus dental, USA), containing 0.375% ACP and 1100 ppm fluoride [189], as well as MI varnish (3M ESPE, USA), containing ACP stabilized by a casein phosphopeptide and NaF [190]. Both of them are used to treat dentin hypersensitivity. Additional details on this topic are available in a recent review [175].

Very schematically, the mechanism of dentin hypersensitivity and the major principles of its treatments by CaPO_4 are shown in Figure 4.

Clinical Applications of CaPO_4 in Dentistry

As written in introduction, dentists have been using CaPO_4 for over a century. However, to the best of my findings, the first available publication on decalcification of teeth as the reason of various dental pathologies was published in 1925 [191]. Furthermore, the clinical applications of CaPO_4 in dentistry started only in 1970-s [192]. Namely, the first application of a CaPO_4 (erroneously described as "TCP of HA structure") bioceramics in surgically created periodontal defects was reported in 1975 [193], followed by a publication on alveolar ridge augmentation in 1978 [194], while the use of dense HA cylinders for immediate tooth root replacement was reported in 1979 [195]. A summary on early (before 1987) studies might be found in Table 3 of Ref. [196], while Table 4 of this publication represents the various types of dental applications of CaPO_4 in the middle of 1980-s [32,196].

Overall, the reasons for the clinical application of CaPO_4 in dentistry are similar to those for their applications in bone grafting. A chemical similarity to the inorganic phases of teeth and bones appears to be the major reason. Consequently, CaPO_4 possess an excellent biocompatibility, biotolerance, an ability to be resorbed by tooth and bone-related cells, osteoconductivity, etc. In addition, CaPO_4 are less expensive than the majority of inorganic fillers used today. Below, the clinical applications of CaPO_4 in dentistry have been classified using two ways: according to the existing CaPO_4 , listed in Table 1, and according to the modern dental specialties, listed in Table 2.

Classification according to the existing CaPO_4 (Table 1)

MCPM and MCPA: Just a few studies on dental applications of MCPM and MCPA were found in databases of scientific literature. According to the available publications, both compounds are used in dentistry as components of self-setting formulations [197,198], including sealers [199]. For example, a commercial product EndoSequence® BC Sealer (Brasseler USA, Savannah, Georgia) is a premixed ready-to-use injectable cement paste developed for permanent root canal filling and sealing applications. It contains zirconium oxide, calcium silicates, MCPA, calcium hydroxide, filler and thickening agents. When this sealer is placed in the root canal, it absorbs water from the dentin tubules causing hydration reactions of calcium silicates. Simultaneously, MCPA reacts with calcium hydroxide to precipitate CDHA. This leads to formation of a composite network of gel-like calcium silicate hydrates, which intimately mixes with CDHA crystals and forms a hermetic seal inside the root canal [199]. In addition, MCPM and/or MCPA were tried as components of caries-inhibiting dental biocomposites, releasing ions of calcium and orthophosphate [198,200]. Once a MCPM-containing chewing gum was tested; it produced a significantly greater saliva flow and a lower salivary pH than the control gum did [109].

DCPD and DCPA: As seen in Table 3, DCPD and/or DCPA are often added to toothpastes as gentle polishing agents. In addition, DCPD and/or DCPA (unfortunately, the authors of the publications on the subject rarely specified which of them was used) are added to chewing gums [104-107,109,117] and other types of dentifrices [63-65,69-76,78]. Furthermore, they are used as either components or end products of various CaPO_4 -based self-setting formulations [43,44,177,184-188,201-211] and root canal sealers [212]. In addition, both compounds are added to biocomposites [213-216]. For example,

decreasing of DCPA particle dimensions were found to increase the Ca- and PO_4 -ions releases from DCPA-based biocomposites. Therefore, such biocomposites possess both a high strength and good release of Ca- and PO_4 -ions, which may provide the needed and unique combination of stress-bearing and caries-inhibiting capabilities suitable for dental applications [215]. Besides, DCPD was tried in pulpectomy [217].

OCP: Just a few publications on applications of OCP in dentistry and dentistry-related fields were found. Namely, OCP might be used as a coating [218,219], a component of biocomposites [219-221] and self-setting formulations [222, 23]. In addition, OCP was tried in pulpectomy [217], as a direct pulp capping material [222] and for alveolar ridge augmentation [220,224]. Furthermore, investigations with rats revealed that implanted OCP could serve as a core for initiating bone formation and cause osteoinduction and osteoconduction in experimentally created cranial defects [225] and enhanced reparative dentine formation via induction of odontoblast differentiation [226].

ACP: Unlike OCP, ACPs appear to be very popular compounds for dental applications [27,119,121-123,178,180,227-278]. For example, two ACP-based remineralization systems have been developed and are now commercially available: a Casein Phosphopeptide (CPP) stabilized ACP with a trade name Recaldent™ (Cadbury Enterprises Pte Ltd., Singapore) and an unstabilized ACP with a trade name Enamelon™ (Enamelon Inc., Cranbury, NJ, USA). CPP is produced from milk protein casein and has a remarkable ability to stabilize CaPO_4 in solutions and substantially increase the level of CaPO_4 in dental plaque. Therefore, in Recaldent™ technology, it is claimed that CPP stabilizes high concentrations of calcium and orthophosphate ions, together with fluoride ions, at the tooth surface by binding to pellicle and plaque. Through the cluster sequence, CPP binds to forming nano-dimensional clusters of ACP preventing their growth to the critical size required for nucleation and phase transformation. CPP-ACP nano-dimensional complexes with a hydrodynamic radius of 1.526 ± 0.044 nm at pH=6.0, which increases to 1.923 ± 0.082 nm at pH=9.0, are formed as a result [279]. It is believed that these CPP-ACP nano-dimensional complexes enter the porosities of an enamel subsurface lesion and diffuse down concentration gradients into the body of the subsurface lesion. Once present there, the nano-dimensional complexes release the weakly bound calcium and orthophosphate ions, which would then deposit into crystal voids [124]. Due to ACPs' bioactivity, local Ca- and PO_4 -enriched environments are created with super saturation conditions favorable for the regeneration of tooth mineral lost to decay or wear. Although all the available ions are stabilized by CPP from promoting dental calculus, they are freely available to diffuse down concentration gradients into enamel subsurface lesions thereby effectively promoting remineralization *in vivo*. The Enamelon™ technology applies calcium ions (e.g., calcium sulfate) and orthophosphate ions (e.g., ammonium orthophosphate, sometimes in the presence of fluoride ions) separately (e.g., from a dual chamber device). Therefore, as the salts mix with saliva they dissolve releasing calcium and orthophosphate ions and ACP (or F-containing ACP) forms intra-orally. In the intra-oral environment, both ACP and F-containing ACP are very unstable and rapidly transform to a more thermodynamically stable, insoluble crystalline phases, such as CDHA and a blend of CDHA + FA, respectively. It is believed that this helps rebuild tooth enamel through remineralization [73,280,281]; however, this approach may also promote dental calculus [27]. Thus, both previously prepared ACP (Recaldent™) and *in situ* precipitated

ACP (Enamelon™, Relief ACP) are used in dentistry to remineralize tooth surface. This property of ACPs is used in toothpastes (Table 3). In addition, there is a commercially produced MI varnish (3M ESPE, USA), containing CPP-ACP Recaldent™, which was found to be effective in dentinal hypersensitivity reducing [190].

As seen from the available references, in dentistry ACPs are usually used as components of various biocomposites. In an acidic oral environment, such biocomposites take advantages of the ability of ACPs to release calcium and orthophosphate ions, which potentially can take part in enamel remineralization [97,112,113,115,116,119,121-123,163-166,227-237,241,242,256,257,272-274,278,282-315]. The ACP-containing biocomposites and hybrid biomaterials can be prepared in various forms, such as crèmes [257], nano-dimensional fibers [259] or cements [309]. Such formulations are used mainly as anti-cariogenic and/or remineralizing agents [112,113,115,116,163-166,256,257,272-274,278,282-315], e.g., in chewing gums [112,113,115,116,119,121,122,123], sugar confections [238], lozenges [283], various tooth mousses [285-287], bleaching gels [290,291], mouth rinses [292], various drinks [293,294] or even in milk [298,299]. In 2016, rechargeable ACP-containing formulations with sustained ion release and re-release were introduced [308-311]. To improve cell adhesion, coatings composed of ACP and hyaluronic acids were used [247]. Finally, ultrathin freestanding ACP sheets were manufactured and tested [276,277]. Additional details on dental applications of ACP-containing biocomposites are available elsewhere [313,315].

α -TCP and β -TCP: According to the available literature, α -TCP and/or β -TCP (unfortunately, the authors of the publications on the subject not always specified which of them was used) are widely used in dentistry and dentistry-related fields. For example, they are used for augmentation of the surrounding bones [194,316-323], in maxillofacial surgery [324-327], as a component of root canal sealers [328] and self-setting formulations to fill dental cavities [329], as implant coatings [330,331], as remineralization [332-334] and pulpotomy [335] agents, for dental pulp capping [336-341], to treat perforations [342,343], as endodontic plugs [344] and to fill various types of bone defects and lesions [345-354]. Microspheres of Mg-doped TCP were tested as delivery vehicles for tooth-bleaching agents [355]. Besides, the investigations to assess the effect of nano-dimensional β -TCP on enamel repair revealed that the use of β -TCP had significant effect on improving enamel mineralization and penetrating into intercrystalline spaces [356]. Furthermore, α -TCP-containing chewing gums were prepared and tested [110,111].

To extend a variety of applications, β -TCP can be functionalized by various organic compounds, such as sodium lauryl sulfate [332], fumaric acid [333] and some other compounds [334,357,358]. Functionalization of β -TCP served two major purposes: first, it provided a barrier that prevented premature β -TCP-fluoride interactions, and second, it provided a targeted delivery of β -TCP when applied to the teeth. Placebo-controlled clinical studies demonstrated that if compared to fluoride alone, the combination of fluoride plus functionalized β -TCP improved remineralization by building stronger, more acid-resistant mineral in both white spot lesions as well as eroded enamel [332-334]. Once a therapy of 36 teeth with deep caries by both HA and undisclosed TCP was carried out. Repeated examinations of patients 1 month and 6 months after treatment showed that both HA and TCP normalized the function of the pulp and caused remineralization of dentin in the bottom of carious cavity [359].

To finalize this topic, one should mention on a commercially produced Clinpro™ white varnish (3M ESPE, USA), containing functionalized undisclosed TCP and 22600 ppm of fluorides, as well as a toothpaste with a similar composition from the same producer (Table 3).

Apatites (HA, CDHA and FA): As seen in Table 2, apatites (HA, CDHA and FA) appear to be the most popular type of CaPO_4 used for dental applications. Since nano-dimensional and nano-crystalline apatites are often considered as the model compounds of dental enamel due to both the chemical and phase similarities [32,33], their use in restorative dentistry offers several promising advantages, including intrinsic radio-opaque response, enhanced polishability and improved wear performance. In addition, they have hardness similar to that of natural teeth [360]. For example, nano-dimensional HA particles were found to have an ability to infiltrate a demineralized collagen matrix of dentin. Afterwards, the infiltrated collagen matrix of dentin might provide a suitable scaffold for dentin remineralization, whereby the infiltrated HA particles could act as seeds within the collagen matrix and, given the appropriate remineralizing environment, dentin remineralization might occur [361]. In addition, it was demonstrated that nano-sized HA particles could be self-assembled to form enamel-like structures [362]. Therefore, a localized biomimetic repair of the enamel surface could be achieved by nano-sized (~ 20 nm) HA, which were analogues to the basic building blocks of the enamel rods. This similarity resulted in a good fixation of artificial biomaterials to natural tissues. Moreover, the enamel structure became reinforced by nano-sized HA since a secondary caries was suppressed and the hardness was retained [365-365]. Furthermore, nano-sized HA could be adsorbed onto the enamel surface strongly and even be integrated into the natural enamel structure [366]. Generally, these studies also suggest that analogues of nano-dimensional building blocks of biominerals should be highlighted in the entire subject of biomineralization. This strategy may have prospective applications in dentistry as it offers an easy but effective method to reconstruct tooth enamel that is suffering from mineral losses.

Normally, apatites for dental applications are prepared from the pure chemicals; however, they could also be prepared from the biological sources, such as teeth [367]. Due to the versatile applications in dentistry, apatites could be used in various formulations, configurations and/or shapes. First, apatites are added to toothpastes (Table 3). Second, apatites are used as coatings to enhance osteoinductivity of various dental implants [368-381]. For example, degradation rates of dental implants covered by 50-micron and 100-micron thick coatings of HA, FA and Fluorhydroxylapatite (FHA) were studied [371]. The implants were inserted in dog jaws and retrieved for histological analysis after 3, 6, and 12 months. The HA and FA coatings (even of 100-micron thick) were almost totally degraded within the implantation period. In contrast, the FHA coatings did not show significant degradation during the same period [371]. The apatite coatings on titanium implants followed by bisphosphonate-immobilization appeared to be effective in the promotion of osteogenesis on surfaces of dental implants [375]. Such coatings are commercially produced. For example, there is a commercial “ μ -ONE HA implant” (Yamahachi Dental, Japan) in which an HA film of 1 μm to 2 μm thick is sputtered by an undisclosed technique to the surface of fixing device (embedded in maxilla during surgery) of titanium implanted teeth. Regarding their durability, the HA-coated dental implants were found to work well in the short to

medium terms (during 4 - 6 years [382], 8 - 10 years [383] and 14 years [384]); nevertheless, even longer-term clinical results are awaited with a great interest [380].

Third, apatites are added as components to intermediate restorative materials [385,386], glass ionomer cements (which are dental restorative materials used for filling teeth) [387-393], enamel resin infiltrants [394], various dental biocomposites [395-402], dentifrices [66,67,72,82,86], mouth rinses [93,94] and toothpastes [92,95-99]. An artificial dental bite was produced by stereolithography from HA-containing biocomposite [403]. Furthermore, application of HA powder was found to be effective in apexogenesis of young permanent teeth of dogs [404]. In addition, an interesting approach to control dental caries by CDHA-osteopontin biocomposites was introduced [401]. Since dental caries is caused by acid production by bacteria in biofilms located on dental surfaces, its preventing involves a control of microorganisms producing the acids. Interestingly that HA-containing mouth rinses were found to be able to reduce the initial bacterial colonization [94]. In another study, CDHA-osteopontin biocomposite particles were prepared to bind to bacteria in the biofilms, impede biofilms building-up without killing the microflora and release orthophosphate ions to buffer bacterial acid production if pH decreased below 6. Analysis of the results revealed that the treatment by either CDHA-osteopontin or pure osteopontin led to less biofilm formation compared to untreated controls. Thus, the anti-biofilm effect of the CDHA-osteopontin particles was ascribed to osteopontin, while CDHA was responsible for buffering effect, which kept pH always above 5.5 [401].

Fourth, there are various types of self-setting apatite-forming and/or apatite-containing formulations [39-41,46-50,405-423]. For example, cement was injected as a bone filler for gaps around oral implants placed on the medial femoral condyles of six goats and excellent bone formation around the graft material was found. Unfortunately, the degradation rate of the cement appeared to be very slow and no resorption was observed [414]. In another study, cement was placed on artificially created periodontal defects but no significant difference was found between the cement and control. Nevertheless, the cement acted as a scaffold for bone formation and provided histocompatible healing of periodontal tissues [415]. Other investigators used cements for direct pulp capping [409,410] and compared them to calcium hydroxide. Both materials were found to be equally capable of producing a secondary dentin at ~ 24 weeks [409]. Still other investigators extracted all mandibular premolar teeth from beagles [412]. After one month of healing, alveolar bones were reduced to make space for previously fabricated CaPO_4 cement blocks. One more month later, 8-mm HA implants were placed in such a manner that the apical half was embedded into alveolar bones and the coronal half in the cement blocks. The investigators observed that the cement blocks were gradually replaced by bone and histopathologic features of the cement area were similar to that of natural bone. Moreover, the coronal half of the implants, previously surrounded by the cement, was firmly attached by natural bone [412]. In another study, the same researchers used fluorescent labeling analysis and electron microanalysis to measure the extent of new bone formation and elemental (Ca, P, Mg) distribution [413]. Besides, several apatite-forming and/or apatite-containing self-setting formulations were tested as root canal fillers [205,408,417] and sealers [405-407,411,416,418]. Since HA alone does not possess the self-setting abilities, to create a self-setting formulation it could be mixed with an epoxy resin [418]. To impart an antibacterial effect, an apatite-

forming MCPM + CaO self-setting formulation with an excess of CaO (which after contact with water was transformed to Ca(OH)_2) was elaborated [199]. Finally, injectable forms of such cements can be used as adjunctive supportive agents for dental implants [423].

An interesting approach was performed in an attempt to regenerate tooth enamel *in vitro* using thin and flexible HA sheets [424]. First, a thin HA film was deposited onto a soluble substrate by pulsed laser deposition technique. Next, the HA film was collected as a freestanding sheet by dissolving the substrate using a solvent. HA sheets of one to several microns thick and up to 50 mm in diameter could be produced by this technique. Then, the HA sheet was adhered to the extracted human teeth using a CaPO_4 -containing solution with pH of 5.5. The authors found that the HA sheet was fused with tooth enamel within approximately one week and that the HA sheet was effective for the restoration and conservation of the tooth in dental applications [424]. This approach was further developed in later studies by introducing a bit thicker (8 μm thick) HA sheets with additionally deposited a thin layer of undisclosed TCP of 500 nm thick [425,426]. One should mention that, due to a small thickness, the HA sheets are transparent (therefore, invisible) and their coloration is possible. Therefore, they could be applied in cosmetic dentistry. In addition, the HA sheets have a number of minute holes that allow liquid and air to escape from underneath to prevent their forming bubbles when it is applied onto a tooth. One problem is that it takes almost one day for an HA sheet to adhere firmly to the tooth's surface. Similar sheets from ACP were developed and tested as well [276,277].

More to the point, dental applications of apatites include direct pulp capping [341,427-431], dentin hypersensitivity treatments [181-183], using in endodontics [432-449], orthodontics [450-458], oral and maxillofacial surgery [324,374,459-485], orthognathic surgery [486-490], prosthodontics [491-501] and periodontics [502-522]. Several apatite-containing biocomposites are commercially produced. The examples comprise Cavalite (Kerr Italia S.r.l., Italia), which is a light-cured cavity liner containing HA and glass ionomer powder, as well as NovaPro™ Fill and NovaPro™ Flow (Nanova Biomaterials Inc., MO, USA), which are nanofiber-reinforced biocomposites containing nano-dimensional powder of HA.

To conclude this section, one should mention that due to a close chemical and phase similarities between apatites and dental enamel, dissolution of apatites in acids is considered as a good model of dental caries [523].

TTCP: According to the available literature, TTCP alone is rarely used in dentistry [524,525]. In the vast majority of the cases, TTCP is combined with either other types of CaPO_4 (mainly DCPD or DCPA) or other chemicals to form various self-setting formulations [177,184-188,201,202,204,206-210], biocomposites [201,202,204,526], as well as root canal sealers [212] and fillings [527]. For example, a FA forming self-setting formulation consisting of solid TTCP, solid NaF and liquid H_3PO_4 was prepared and used for *in vitro* filling of big enamel carious cavities. The results revealed that the hardened formulation was tightly combined with the enamel surface due to the chemical interaction between the formulation and enamel apatite [209]. Once a TTCP-containing chewing gum was prepared and tested [109].

Biphasic and multiphasic CaPO_4 formulations: According to the definition, biphasic and multiphasic CaPO_4 formulations represent various blends of two or more individual types of CaPO_4 , respectively, and, among them, a biphasic calcium phosphate (abbreviated as

BCP) formulation, consisting of HA and β -TCP, appears to be the most popular one [24]. An injectable bone and dental substitute constituted of BCP and a hydrosoluble cellulose polymer as a carrier was developed [528]. This formulation was used for filling bone defects after tooth extractions in 11 patients. 3 years after surgery, small biopsies of the implanted areas were harvested and analyzed by using micro-computed tomography, non-decalcified histology and histomorphometry. The BCP granules appeared in direct contact with mineralized bone tissue, thereby supporting bone growth. A gradual substitution of the filler by bone tissue was observed thus preserving the height of the alveolar bone crest [529]. Similar results were obtained in another study [530]. In addition, BCP was found to be effective for healing of dental bones, osseous and/or intrabony defects [51,531-544]. For example, micro- and macroporous BCP combined with a fibrin sealant was found to be safe and effective in sinus floor elevation for dental implant placement, supporting bone regeneration [541]. Furthermore, BCP was used to fill dental root canals [545] and as hypersensitivity treatment agent [546], while a triphasic CaPO_4 (α -TCP + HA + TTCP) was applied as a direct pulp capping material [547].

Classification according to the dental specialties (Table 2)

Endodontics: Generally, root canal filling materials are divided into core materials and root canal sealers. Root canal obturation consists of placing an inert filling material in the space previously occupied by pulp tissue. To achieve successful endodontic therapy, it is important to obturate the root canal system completely. Thus, the effective endodontic obturation must provide a dimensionally stable, inert fluid tight apical seal that will eliminate any portal of communication between the canal space and the surrounding periapical tissues through the apical foramen. According to the databases, the earliest publication on use of CaPO_4 in endodontics was published in Japanese in 1983 [432], followed by a publication in English in 1984 [433]. Several examples of endodontic applications of CaPO_4 are given below.

A case of combined endodontic-periodontic lesions on a mandibular first molar was treated by intentional replantation and application of HA. Four months after the surgery, a porcelain-mental full crown restoration was completed. The 15 month follow-up examination showed that the tooth was clinically and radiographically healthy and functioned well [441]. Several types of CaPO_4 (DCPD, OCP, β -TCP, BCP (HA + β -TCP) and HA) in particle sizes of < 5 μm or < 150 μm were used for pulp capping teeth of pigs, rats, and dogs. All types of CaPO_4 showed biocompatibility. Based on these results, it was suggested that these types of CaPO_4 might be useful for specific clinical applications in endodontics, such as, pulp capping (microparticles of HA, β -TCP, BCP) and pulpectomy (HA, OCP, DCPD) [217]. Applicability of CaPO_4 in pulpotomy and pulpectomy was confirmed in other studies [335,548,549].

Bone regeneration in endodontically induced periapical lesions using HA, platelet-rich plasma and a combination of HA with platelet-rich plasma was evaluated for a period of one year with 20 systemically healthy patients [446]. To qualify, the patient had to have a tooth where non-surgical root canal therapy had failed, periapical radiolucency was present and periapical root end surgery was required. The bony defect had to be confined to the apical area, with the bone covering the entire root surface coronally, with an intact lingual cortical plate. The patients were randomly divided into 4 groups, with 5 patients each, as follows: replacement with HA, replacement with platelet-rich

plasma, replacement with HA with platelet-rich plasma and a control group with no substitutes. The radiographic evaluation revealed that the HA patients showed complete bone regeneration with evidence of a trabecular pattern at the end of one year, the platelet-rich plasma patients showed complete bone regeneration at the end of 9 months, the HA with platelet-rich plasma patients showed complete bone regeneration at the end of 6 months, while the control patients showed unsatisfactory bone regeneration even after one year. Thus, HA addition to platelet-rich plasma was proven to facilitate bone regeneration [446].

An injectable bone substitute made of a suspension of BCP (HA + β -TCP) bioceramics was used to fill dental root canals after removing of canal pulp [545]. The aim of that study was to verify the ability of a CaPO_4 ceramic suspension to fill the apical zone of teeth both ex vivo and in vivo in a sheep model. The results showed that injection was possible with a good level of BCP granules at the end of the root dental canal with extracted tooth. The results of scanning electron microscopy investigations revealed mineral formation at the apex level with mineral tissue conduction between the BCP granules; however, only one tooth showed a good apical filling with a good sealing. The authors concluded that the sealing of the apex seemed to depend of the amount of BCP granules [545].

Furthermore, there are CaPO_4 -containing endodontic and/or root canal sealers [212,328,405-407,411,416,418,437,438,442,443,445,447-449,550-564]. The composition of 2 examples of such sealers (Sankin apatite root canal sealer and Capseal) is presented in Table 5 [555]. Of them, Capseal was found to result in both a higher alkalinity and a higher calcium ion releases than Sankin apatite root canal sealers [554]. The results of their application revealed that the sealers mentioned in Table 5 facilitated the periapical dentoalveolar and alveolar healing by controlling cellular mediators from periodontal ligament cells and osteoblast differentiation of precursor cells [555].

More to the point, endodontic perforations were treated by CaPO_4 [342,343,434,564], but once a lack of complete healing was noticed [343]. Additional examples of the endodontic applications of CaPO_4 comprise the following cases. They can be used as components of endodontic cements [329,435,562-565] or coatings for endodontic dental implants [444], as well as serve as a root end filling material [438,440] and as endodontic endosseous implants [436]. Since CaPO_4 do not cause inflammation [342], they could be used as a hard plug deep inside teeth [344]. Finally yet importantly, CaPO_4 crowns were manufactured [566].

Oral and maxillofacial surgery: An insufficient bone volume and a poor bone density are common problems in edentulous patients with resorbed maxilla. One method that makes implant placement possible in such difficult situations is augmentation of maxillary sinus using various bone grafts [556]. Besides, there are other cases, in which bone grafts appear to be necessary for dentistry-related fields.

Due to these cases, CaPO_4 have been used in oral and maxillofacial surgery since 1980-s [324,459-468] and up to now many scientific articles have been published on the subject [39-52,325,460]. However, as written in section 2, the vast majority of the publications on this subject deals with a treatment of the surrounding bones and, thus, they fall into a category of bone substitutes, which is another story. Nevertheless, the following directions of CaPO_4 application in oral and maxillofacial surgery can be outlined: coatings on various types of dental implants [368-384,444,567-571,380], augmentation

of the surrounding bones [45,220,224,317-323,374,412,452-478,572] and using as fillers of osseous mandible and/or jaw defects [326,410,419,479-485].

Orthodontics: According to the databases, the earliest publications on use of CaPO_4 in orthodontics appeared in 1989 [450-452]. Coatings of CaPO_4 (both HA [454] and α -TCP [330]) were successfully applied to titanium implants and the coated implants were found to be applicable as anchorage for short-term orthodontic treatment [454] and both types of coatings appeared to be effective stimulators of new bone formation [330]. In another study, HA addition to orthodontic cement was found to have a protective action on the dental enamel near the orthodontic bands or brackets [453]. Furthermore, there are CaPO_4 bioceramic brackets Hyaline[®] (Tomy International Inc., Tokyo, Japan) (Figure 5). In addition to excellent biocompatibility, these brackets have a hardness equivalent to that of tooth enamel, which eliminates fears of dental abrasion due to the occluding tooth even when the patient has a deep-bite [573-575]. Besides, there is a study, in which researchers improved antibacterial properties of commercially produced light cure adhesive Transbond XT (3M Oral Care, MN, USA) by addition of nano-dimensional composite particles of HA with silver. The Transbond XT composite discs containing 5% and 10% of Ag/HA were found to produce bacterial growth inhibition zones and showed antibacterial properties against biofilms [576].

However, among all available types of CaPO_4 (Table 1), ACP-containing formulations are most often used in orthodontics [240,243-246,248-252,254,260,261,264-272]. For example, an efficacy of an ACP-containing orthodontic biocomposite and resin-modified glass ionomer cement on enamel demineralization adjacent to orthodontic brackets was evaluated by a new laser fluorescence device. The authors concluded that both formulations should be recommended for any at-risk orthodontic patient to provide preventive actions and potentially remineralize subclinical enamel demineralization [240]. Similarly, ACP-containing orthodontic biocomposites were found to reduce both enamel decalcification around orthodontic brackets [250,251,264] and bacterial adherence [264]. Furthermore, ACP-containing orthodontic biocomposites were found to possess a lower but still satisfactory bond strength needed to function as orthodontic adhesives [243,244,246-248]. Therefore, CPP-ACP biocomposite, either alone or combined with fluoride, may safely be used as a prophylactic agent before bracket bonding [261,267]. Besides, a pretreatment by CPP-ACP, enamel microabrasion and the combination of these two methods were found to improve bonding of orthodontic brackets to demineralized enamel [267]. Rechargeable orthodontic self-setting formulations containing ACP with sustained ion release and re-release were developed, as well [309-311]. Adipharous results were obtained either. For example, a topical treatment of white spot lesions after debonding of orthodontic appliances with a CPP-stabilized ACP agent resulted in significantly reduced fluorescence and reduced areas of the lesions after 4 weeks; however, the improvement was not superior to the natural regression following daily use of fluoride toothpaste [252]. In addition, no clinical advantages for use of a CPP-fluoridated ACP paste supplementary to normal oral hygiene over the time span of 12 weeks were found in another study [254].

Prosthodontics: Humans have long used both natural and synthetic materials as replacements for lost teeth. For example, the earliest known dental implant was made of iron and found in a Roman male, who lived around the first or second century AD [577]. The first

known tooth made from a natural material was found in a Mayan woman, estimated around 600 CE, and was made of nacre from seashells [578]. Nevertheless, despite a long history of the tooth grafts, just a few publications on prosthodontic applications of CaPO_4 are available (Table 2). According to the databases, the earliest publication on the subject was published in 1983 [491], followed by another publication by the same authors [492]. A 4-year study and evaluation of non-resorbable HA to augment different alveolar ridges was performed. The technique used resulted in improved contour, height, and width of the alveolar ridge. The state and health of the tissues were found to be improved with the use of HA or HA combined with bone marrow [491]. However, the study dealt with a treatment of bones but not teeth, which is another story. Similar can be said about other publications on the subject [493-500]. Furthermore, as seen from the publication dates, all these papers were published in the previous century and only one recent paper [501] has been found. Nevertheless, even this recent paper is devoted to the preparation subject with just a possibility to use the material as dental prosthesis. Thus, one can mention on the past attempts to use CaPO_4 in prosthetic dentistry and, since no promising results were obtained, currently CaPO_4 are not used in prosthodontics.

To finalize this topic, it is important to mention that one of the challenges in dental implantology is to achieve and maintain a good osseointegration, as well as an epithelial junction of gingival tissues with the implants. An intimate junction among them may prevent bacteria colonization leading to peri-implantitis, while the direct bonding may ensure a biomechanical anchoring of the artificial dental roots (Figure 6) [579]. To achieve this, the presence of sufficient bone volume is an important prerequisite for dental implant placement. However, this is not always the case. Namely, atrophic maxilla and mandible bones are less tolerant to the placement of dental implants due to their reduced height and width; hence, supplementary bone augmentation by CaPO_4 might be necessary [580,581]. In addition, I would like to point the readers' attention to a review on dental implants for patients with osteoporosis. According to the authors, osteoporosis is not a contraindication for the implant surgery if the accurate analysis of bone quality has been performed [582].

Periodontics (Periodontology): In general, the regeneration of tissues affected by periodontal disease is a complex process; it encompasses formation of bones, cementum and periodontal ligaments [583]. According to the databases, the earliest publication on use of CaPO_4 in periodontics was published in 1974 [584], followed by research papers of 1975 [193] and 1977 [345] and a review of 1978 [346]. A schematic diagram of the management of periodontal defects by a bone graft technique is shown in Figure 7 [585]. However, as written in section 2, the vast majority of the publications on periodontics deals with a treatment of the surrounding bones and, thus, they fall into a category of bone substitutes [206,316,347-358,423,502-522,534,536,539,542-544,586-594]. Nevertheless, a few examples are given below.

The post-extraction bone resorption is an increasing problem in modern dentistry. Namely, after extraction of a tooth, the bony socket heals naturally. First, it is immediately filled with coagulated blood. In a few days afterwards, the granular and fibrous tissues are organized to form a new bone tissue gradually. However, due to the tooth absence, maxilla and/or mandibular alveolar atrophies occur simultaneously. These resorptive and remodeling phenomena of the surrounding bone negatively affect the support for the adjacent teeth; the shallow

ridge makes it difficult for future prosthesis retention and less bony support remains for any dental implant placement in the future. To promote healing, the socket of an extracted tooth might be filled by CaPO_4 bioceramics. For example, an efficacy of commercial HA granules APAFILL-G™ as a filler to prevent the resorption of alveolar bone after tooth extraction was studied [595]. After seven days, the result revealed that only one of all treated patients experienced an adverse response observed at the clinical evaluation that promptly disappeared after analgesic treatment. The rest 32 dint had adverse clinical response. Radiographically, a continuous radio-opacity between bone and the implant resorption was detected after one year the surrounding alveolar bone maintained its contour without symptoms of resorption for the 100% of the patients [595]. In another study, two different types of HA grafting materials, biomimetic and nano-crystalline, were placed into fresh extraction sockets aiming to limit bone resorption. The surgical sites were histologically, clinically and radiographically evaluated 6 months after tooth extraction. The percentages of bone, osteoid areas and residual material in the two groups were not statistically different [596].

Furthermore, repositioning maxillary and mandibular bone segments in orthognathic surgery frequently creates bone gaps or continuity defects. These often require grafting to provide positional stability and bony continuity and CaPO_4 are used for this purpose. For example, as early as 1987, a study to evaluate the use of coralline porous HA as a bone graft substitute in orthognathic surgery [486], followed by another study in 1989 [487]. 92 consecutive patients received totally of 355 block implants to the maxilla (294), mandible (41) and midface (20). There were 202 implants positioned directly adjacent to the maxillary sinus. Complications were minimal, the most common being exposure of the implant to the oral or nasal cavity. Histological evaluation of implants that were biopsied in nine patients, four to 16 months post surgery, revealed connective tissue ingrowths throughout the implants with approximately one-third being bone of variable maturity and two-thirds being soft tissue [486]. Similar results were obtained in another study [487]. Periodontal ligaments around extracted sockets were found to have an ability to regenerate bone on HA-coated tooth-shaped implants [379]. Positive results were also observed in another study, in which bone formation around BCP (HA + β -TCP) particles in periodontal defects of dogs were found to be more discernible if compared to healing in control [530]. In addition, the porosity of the implanted CaPO_4 was found to influence periodontal healing of furcation defects in dogs [327].

To increase a treatment efficiency of the periodontal defects, CaPO_4 might be combined with the biologically active molecules, such as hormones, growth factors, morphogenetic proteins, etc. [535,597-603]. For example, an application of recombinant human growth and differentiation factor-5 (rhGDF-5) lyophilized onto β -TCP granules demonstrated an effective regeneration of the artificially created periodontal defects [597,598]. Positive results were also obtained for a combination of a recombinant human platelet-derived growth factor BB (rhPDGF-BB) with β -TCP for the treatment of human intraosseous periodontal defects [699,600]. However, a combination of an enamel matrix derivative with BCP (HA + β -TCP) resulted in no to minimal new bone formation [535]. Furthermore, a combination of human bone morphogenetic protein-2 (rhBMP-2) with bioresorbable CaPO_4 cement Ceredex™ (ETEX Corporation, MA, USA) was not suggested for periodontal indications [601]. Besides, there are results indicating that the use of CaPO_4 after open flap procedure does not improve the clinical and radiological treatment outcomes of periodontal intrabony

Table 3: Trademarks of CaPO_4 - containing commercial tooth pastes.

Type of CaPO_4	Human or Animals	Trade name and producer (when available)
HA	Human	Aclaim (Group Pharmaceuticals Limited, India)
		Active Remineralization Toothpaste (A.R.T.) (Pearlie White, Corlison, Singapore)
		ApaCare (Cumdente, Germany)
		Apadent (Sangi Co., Japan)
		Apagard Premio (Sangi Co., Japan)
		Arcticum (SPLAT-COSMETICA, Russia)
		Biorepair (Coswell, Italy)
		Biorepair (Dr. Wolff, Bielefeld, Germany)
		Coolin Bubble (Canavena Co., Korea)
		DIO (DIO Co., Korea)
		Desensibilize Nano P (FGM Produtos Odontológicos, Brasil)
		Desensin repair (Dentaid)
		Hakusanshiko (Japan)
		Janina (Janina Ultra White, UK)
		Kalident - calciu hydroxyapatite (Kalichem, Italia)
		MAXIDENT (STS Cosmetics, Bulgaria)
		Megasonex (Goldspire Group, Hong Kong)
		nanoXIM.CarePaste (FLUIDINOVA, Portugal)
		Parodontol Active (Svoboda Ltd., Russia)
		PrevDent (PrevDent International, Netherlands)
		Renamel AfterBleach (Sangi Co., Japan)
		Remin (X-PUR, Oral Science, QC, Canada)
		R.O.C.S. SENSITIVE (DRC Group, Russia)
		Sensitive Reminx (Pharma Jenistec Co., Korea)
		Triple Denta (TripleLife Co., Ltd., Korea)
		Ultracomplex (SPLAT-COSMETICA, Russia)
		UltraDEX Recalcifying and Whitening (Periproducs Ltd., UK)
		VITIS anticaries toothpaste (Dentaid)
		YP Dental (You Co., Ltd. Japan)
TCP	Human	Clinpro Tooth Crème (3M ESPE, USA)
ACP	Human	Age Defying (Arm & Hammer, Church & Dwight Co. NJ, USA)
		Complete Care (Arm & Hammer, Church & Dwight Co. NJ, USA)
		EnaFix (Group Pharmaceuticals Limited, India)
		Enamel Care (Arm & Hammer, Church & Dwight Co. NJ, USA)
		Enamel Pro (Premier Dental Products Company, USA)
		Enamelon (Premier Dental Products Company, USA)
		GC Tooth Mousse (GC Corporation, Japan)
		INNOVA (SPLAT-COSMETICA, Russia)
		MI paste (GC America, IL, USA)
		MI paste plus (GC America, IL, USA)
		All White (Dr. Collins, USA)
		Colgate Cavity Protection (Colgate-Palmolive, NY, USA)
DCPD or DCPA	Human	Dentu-Creme Denture (Polident, GlaxoSmithKline, UK)
		Plus White (CCA Industries Inc., NJ, USA)
		Pureen (Singapore)
		R.O.C.S. PRO Baby (DRC Group, Russia)
		Snappy Jaws (Australia)
		Supersmile (USA)
		Triple Action Whitening (Pearl Drops, Church & Dwight, NJ, USA)
		Triple Power Whitening (Pearl Drops, Church & Dwight, NJ, USA)
		VITA-MYR (NV, USA)
	Animals	Advanced Oral Care (Nylabone, NJ, USA)
		C.E.T. Enzymatic (Virbac, TX, USA)
		Dental Care Kit (Sentry Petrodex, Sergeant's Pet Care Products, NE, USA)
		Dentifresh (Hatchwell, UK)
		Enzymatic toothpaste (Sentry Petrodex, Sergeant's Pet Care Products, NE, USA)
		Four Paws Pet Dental (Four Paws Products, NY, USA)
		VetOne (VetOne, ID, USA)
undisclosed CaPO_4	Human	TriMedica Pure MSM (TriMedica, Northern Ireland, UK)

Table 4: Dental applications of CaPO_4 in the middle of 1980-s [32,196].

1	Restore (augment) alveolar ridge for better denture fit
2	Immediate tooth root replacement to prevent resorption of alveolar ridge
3	Fillers for periodontal defects or bone loss
4	Coatings for metal implants to improve bone-implant adhesion and prevent loosening of the metal implants
5	Repair of cleft palate
6	Repair of maxillofacial defects
7	Pulp capping materials

Table 5: Composition of the available CaPO_4 - containing sealer materials [556].

Brand name	Manufacturer	Components
Sankin apatite root canal sealer (I, II and III)	Sankin Kogyo, Tokyo, Japan	Powder: α -TCP and Sankin HA in type I, iodoform is added to powder in type II (30%) and type III (5%). Liquid: polyacrylic acid and water
CAPSEAL (I and II)	experimental	Powder: TTCP and DCPA, Portland cement (gray cement in type I and white cement in type II), zirconium oxide, and others. Liquid: hydroxypropyl methyl cellulose in sodium phosphate solution

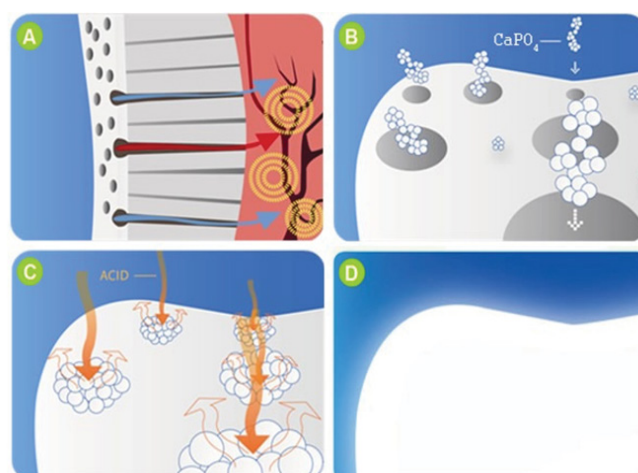


Figure 4: Figure 4: (A) Exposure of dentin tubules to hot and cold temperatures stimulates nerves and causes pain; (B) nano dimensional CaPO_4 particles fill dentin tubules binding chemically to dental structure reducing hypersensitivity; (C) CaPO_4 re-mineralizes the tooth enamel protecting it against acid attacks from food and beverages; (D) improved smoothness and whitening due to the enamel repair. Reprinted with authorization of FLUIDINOVA SA.



Figure 5: Appearances of CaPO_4 ceramic brackets Hyaline and Hyaline II. Reprinted with permission from Meguro D et al. [576].

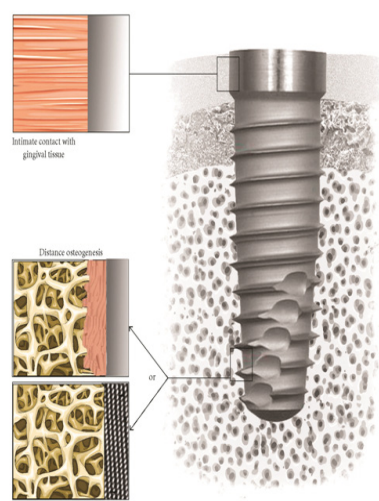


Figure 6: Tissue integration of a dental implant. Note the intimate contact with gingival tissue in the upper part and the desired contact osteogenesis in the tapered lower part rather than distance osteogenesis. Reprinted with permission from Lavenus et al [581].

defects [602]. Thus, applications of CaPO_4 in periodontology were not always positive.

Additional details on this topic are available in special reviews [604,605].

Other types of oral applications: Mucositis is the painful inflammation and ulceration of the mucous membranes lining the digestive tract, usually as an adverse effect of chemotherapy and radiotherapy treatment for cancer. Mucositis can occur anywhere along the gastrointestinal tract, but oral mucositis refers to the particular inflammation and ulceration that occurs in the mouth [606]. It can delay discharge, interrupt treatment and threaten life. To help the patients, rinses, supersaturated by undisclosed types of CaPO_4 , were prepared and evaluated [607-612]. For example, a review paper is available, in which the author looked at data from all known adult and pediatric studies investigating the use of a supersaturated by CaPO_4 mouth rinse Caphosol® (EUSA Pharma, UK) in patients receiving high-dose cancer therapy in order to evaluate its efficacy for both the prevention and treatment of oral mucositis. Thirty studies were identified. The majority of these studies ($n=24$) found Caphosol® to be efficacious at reducing the grade and/or duration, as well as pain associated with this disease [610]. However, the most recent data claim that supersaturated by CaPO_4 rinses were found to be ineffective to treat mucositis [611,612].

Tissue Engineering Approaches

As seen from the aforementioned, CaPO_4 are widely used in dentistry to restore and/or repair various types of oral defects and diseases. However, all the previously mentioned approaches have encountered shortcomings if compare to the normal and healthy teeth and surrounding bones. Therefore, various tissue engineering approaches to develop new strategies for tooth regeneration are attempted. The history of tissue engineering in dentistry started in 1982, when the first regeneration technology of periodontium was introduced [613]. The modern tissue engineering approaches in dentistry include combinations of cells, engineering materials and suitable biochemical and physicochemical factors to improve or replace biological functions. Finally, it will cause in vivo formation

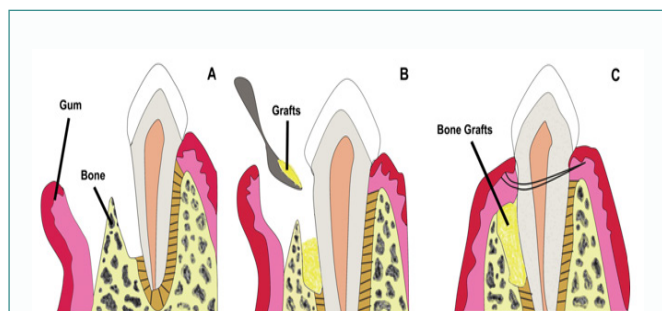


Figure 7: A schematic diagram of the management of periodontal defects by a bone graft technique. The CaPO_4 grafts stimulate bone growth and a new bone fills the defect, which provides a better support for a tooth. Adapted with permission from Chen FM et al [587].

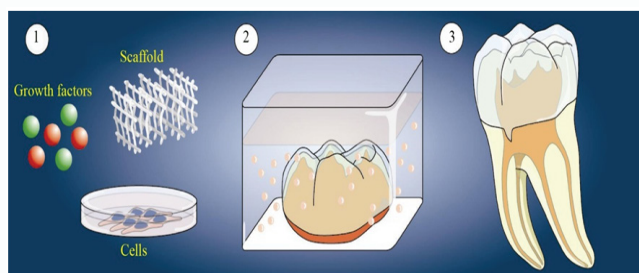


Figure 8: A schematic diagram of entire tooth regeneration from the proper combination of growth factors and cells (stem cells or progenitor cells) seeded on a CaPO_4 scaffold. Adapted with permission from Kitamura C et al. [625].

and growing of new functional tissues instead of reparation and/or replacement of damaged and/or missing ones by artificial materials and/or implants [614-618]. From the material point of view, there are two main approaches towards making a bioengineered tooth: scaffold-free and scaffold-based regenerations. The scaffold-free approaches, such as tissue recombination, cell pellet engineering and chimerical tooth engineering, are being developed and the correct tooth-like structures could be generated after transplantation in the sub-renal capsule [619-621]. However, with an exception of using soluble calcium- and orthophosphate-containing solutions to promote proliferation, osteogenic differentiation and mineralization of various types of dental cells [622], the scaffold-free approaches do not utilize CaPO_4 . Therefore, in this review, scaffold-based tooth regeneration approaches are considered only. A schematic drawing of this process is shown in Figure 8 [623].

For example, it was hypothesized that dental follicle cells combined with β -TCP might become a novel therapeutic strategy to restore periodontal defects. The authors suggested isolation of dental follicle cells from a beagle dog. The isolated cells should be induced by bone morphogenetic protein-2, basic-fibroblast growth factors and dexamethasone and, then, seeded onto β -TCP bioceramics. Afterwards, the complex should be auto-implanted into the periodontal defects in the same dog to observe regeneration of periodontal tissue *in vivo* [624]. However, this was just a hypothesis. Let me describe the real investigations.

A biocompatibility of four different types of 3D scaffolds for regeneration of tooth tissues was tested [625]. The scaffolds consisted of pure poly (lactic-co-glycolic) acid (PLGA) or 50/50 w/w biocomposites of PLGA with HA, β -TCP or carbonate-containing HA. Afterwards, human dental pulp stem cells were seeded onto the scaffolds, followed by implantation into the mesentery or sub-renal

capsule of mice or rats for 4 weeks to 5 weeks. The results showed that, while all CaPO_4 -containing formulations were able to support effectively regeneration of the tooth tissues, the PLGA/ β -TCP scaffolds appeared to be superior to the other three scaffolds for tooth tissues regeneration, especially for dentin formation [625]. Very promising results were also obtained by other researchers for β -TCP/chitosan biocomposites [626], recombinant human transforming growth factor-beta 1 (rhTGF- β 1) combined with two different bone grafts: calcified freeze-dried bone allograft and porous BCP [627] and a complex of recombinant human bone morphogenetic protein 2 (rhBMP-2)-mediated dental pulp stem cells and nano-sized HA/collagen/poly (L-lactide) for clinical reconstruction of periodontal bone defects [628]. Positive results were also obtained for polycaprolactone-TCP scaffolds [629].

In still other studies, polyglycolic acid (PGA) scaffolds were compared with β -TCP, fibrin and collagen scaffolds for their capacity to grow dental structures when seeded with tooth germs from 6-month-old minipigs. On fibrin and collagen gels, the porcine third molar tooth bud maintained its epithelial structure, resembling tooth buds, whereas on PGA and β -TCP the implanted tooth buds produced more dentin-like material [630]. Porous BCP (HA + β -TCP), powdered BCP and PGA fiber mesh were used as scaffolds and transplanted with cultured porcine dental pulp-derived cells into the backs of nude mice for 6 weeks. Although newly formed hard tissues were observed in all implants, a dentin-like hard tissue was observed when porous BCP was used [631]. Besides, incorporation of nano-sized HA into electrospun poly(ϵ -caprolactone)/gelatin scaffolds was found to enhance dental pulp stem cells differentiation towards an odontoblast-like phenotype both *in vitro* and *in vivo* [632]. The osteoblast marker bone sialoprotein was highly expressed on β -TCP scaffolds seeded by dental follicle cells but almost absent in differentiated dental follicle cells without β -TCP [633]. The latter means that dental progenitor cells have to be combined with CaPO_4 bioceramics.

To conclude this topic, the tissue engineering approaches of dental regenerations, obviously, appear to be the most promising healing technologies and many interesting studies on a combination of CaPO_4 scaffolds with cells and/or growth factors are expected to appear in the near future.

Conclusions

Biologically relevant types of CaPO_4 are the emerging bioceramics, which are widely used in various biomedical applications, including dentistry. They have excellent biomedical properties and biological behavior because their composition and structure are similar to those of human bones and teeth. Therefore, CaPO_4 possess exceptional biocompatibility and unique bioactivity, which are widely used in dentistry and dentistry-related fields. For example, incorporation of CaPO_4 into various restorative biomaterials was found to improve mechanical properties of the biomaterials without impeding their inherent biological properties. Other examples have been described above. Nevertheless, the versatile employing strategies of CaPO_4 in dentistry aim to ultimately reach the same goal, namely to enhance osseointegration process of dental implants in the context of immediate loading and to augment formation of surrounding bones to guarantee a long-term success. However, still the complete understanding related to use of CaPO_4 in clinical dentistry is lacking and further research is needed to improve their efficacy in clinical dentistry.

Reference

- Lanfranco LP, Eggers S. Caries through time: an anthropological overview. In: Yu ML, editor. Contemporary approach to dental caries. Croatia: IntechOpen, Rijeka; 2012. p. 3-34.
- Wang W, Zeng XL, Liu W. [Dental caries in ancient Chinese in Xia Dynasty]. *Zhonghua Kou Qiang Yi Xue Za Zhi*. 2008;43(5):308-10.
- Bellagarda G. La carie dentaria e le sue cure negli scritti degli antichi. [Dental caries and their treatment in the writings of the ancients]. *Minerva Med*. 1965;56:892-903.
- Fujita H. Dental caries in Japanese human skeletal remains. *J Oral Biosci*. 2009;51(2):105-14.
- Corbett ME, Moore WJ. Distribution of dental caries in ancient British populations. I. Anglo-Saxon period. *Caries Res*. 1971;5(2):151-68.
- Corbett ME, Moore WJ. Distribution of dental caries in ancient British populations. II. Iron age, Romano-British and Mediaeval periods. *Caries Res*. 1973;7(2):139-53.
- Moore WJ, Corbett ME. Distribution of dental caries in ancient British populations. III. The 17th century. *Caries Res*. 1975;9(2):163-75.
- Corbett ME, Moore WJ. Distribution of dental caries in ancient British populations. IV. The 19th century. *Caries Res*. 1976;10(6):401-14.
- Kerr NW. The prevalence and pattern of distribution of root caries in a Scottish medieval population. *J Dent Res*. 1990;69(3):857-60.
- LeGeros RZ. Calcium phosphates in demineralization/remineralization processes. *J Clin Dent*. 1999;10(2):65-73.
- González-Cabezas C. The chemistry of caries: remineralization and demineralization events with direct clinical relevance. *Dent Clin North Am*. 2010;54:469-78.
- West NX1, Joiner A. Enamel mineral loss. *J Dent*. 2014;42 Suppl 1:S2-11.
- Ilie O, van Loosdrecht MC, Picioreanu C. Mathematical modelling of tooth demineralisation and pH profiles in dental plaque. *J Theor Biol*. 2012;309:159-75.
- Fabregas R, Rubinstein J. On the initial propagation of dental caries. *J R Soc Interface*. 2014;11(100):20140809.
- Fabregas LR, Rubinstein J. A mathematical model for the progression of dental caries. *Math Med Biol*. 2014;31(4):319-37.
- Yu OY, Zhao IS, Mei ML, Lo EC, Chu CH. A review of the common models used in mechanistic studies on demineralization-remineralization for cariologic research. *Dent J*. 2017;5(2):20.
- Dowd FJ. Saliva and dental caries. *Dent Clin North Am*. 1999;43(4):579-97.
- Fejerskov O, Kidd E, editors. Dental caries: the disease and its clinical management. 2nd ed. Wiley-Blackwell; 2008.
- Eccles JD. Dental erosion of nonindustrial origin. A clinical survey and classification. *J Prosthet Dent*. 1979;42(6):649-53.
- Lussi A, editor. Dental erosion: from diagnosis to therapy. Switzerland: Karger-Basel; 2006.
- Mjör IA, Toffenetti F. Secondary caries: a literature review with case reports. *Quintessence Int*. 2000;31(3):165-79.
- Höland W, Schweiger M, Watzke R, Peschke A, Kappert H. Ceramics as biomaterials for dental restoration. *Expert Rev Med Devices*. 2008;5(6):729-45.
- Dorozhkin SV. Calcium orthophosphates bioceramics. *Ceram Int*. 2015;41(10):13913-66.
- Dorozhkin SV. Multiphasic calcium orthophosphate (CaPO₄) bioceramics and their biomedical applications. *Ceram Int*. 2016;42(6):6529-54.
- Widström E, Birn H, Haugejorden O, Sundberg H. Fear of amalgam: dentists' experiences in the Nordic countries. *Int Dent J*. 1992;42(2):65-70.
- Thompson JY, Stoner BR, Piascik JR. Ceramics for restorative dentistry: critical aspects for fracture and fatigue resistance. *Mater Sci Eng: C*. 2007;27(3):565-9.
- Reynolds EC. Calcium phosphate-based remineralization systems: scientific evidence? *Aust Dent J*. 2008;53(3):268-73.
- Cravens, J.E. Lacto-phosphate of lime; pathology and treatment of exposed dental pulps and sensitive dentine. *Dent. Cosmos* 1876, 18, 463-469; discussion 469-476.
- Pendleton, L.W. The lacto-phosphate of lime. *Transactions of the Maine Medical Association* 1873, 4, 313-318.
- Dorozhkin SV. Calcium orthophosphates: applications in nature, biology, and medicine. Singapore:Pan Stanford; 2012. 854 p.
- Dorozhkin SV. Calcium orthophosphates (CaPO₄): occurrence and properties. *Prog Biomater*. 2016;5:9-70.
- LeGeros RZ. Calcium phosphates in oral biology and medicine. *Monogr Oral Sci*. 1991;15:1-201.
- Elliott JC. Structure and chemistry of the apatites and other calcium orthophosphates. In: *Studies in inorganic chemistry*. Volume 18; Elsevier: Amsterdam, The Netherlands, 1994; 389 pp.
- Dorozhkin SV. Calcium orthophosphate-based bioceramics and biocomposites. Germany: Wiley-VCH: Weinheim; 2016.
- Dentistry - Wikipedia. (accessed in July 2018).
- Dental public health - Wikipedia. (accessed in July 2018).
- Endodontics - Wikipedia. (accessed in July 2018).
- Specialty (dentistry) - Wikipedia. (accessed in July 2018).
- Friedman CD, Costantino PD, Jones K, Chow LC, Pelzer HJ, Sisson GA Sr. Hydroxyapatite cement. II. Obliteration and reconstruction of the cat frontal sinus. *Arch Otolaryngol Head Neck Surg*. 1991;117(4):385-9.
- Reddi SP, Stevens MR, Kline SN, Villanueva P. Hydroxyapatite cement in craniofacial trauma surgery: indications and early experience. *J Craniomaxillofac Trauma*. 1999;5:7-12.
- Friedman CD, Costantino PD, Synderman CH, Chow LC, Takagi S. Reconstruction of the frontal sinus and frontofacial skeleton with hydroxyapatite cement. *Arch Facial Plast Surg*. 2000;2(2):124-9.
- Smartt JM, Karmacharya J, Gannon FH, Ong G, Jackson O, Bartlett SP, et al. Repair of the immature and mature craniofacial skeleton with a carbonated calcium phosphate cement: assessment of biocompatibility, osteoconductivity and remodeling capacity. *Plast Reconstr Surg*. 2005;115:1642-50.
- Kuemmerle JM, Oberle A, Oechslein C, Bohner M, Frei C, Boeckel I, et al. Assessment of the suitability of a new brushite calcium phosphate cement for cranioplasty - an experimental study in sheep. *J Craniomaxillofac Surg*. 2005;33:37-44.
- Luaces-Rey R, Garci'a-Rozado A, Crespo-Escudero JL, Seijas BP, Arenaz-Bu'a J, Lo'pez-Cedru'n JL. Use of carbonated calcium phosphate bone cement and resorbable plates for the treatment of frontal sinus fractures: two case reports. *J Plast Reconstr Aesthet Surg*. 2009;62(2):272-3.
- Tamimi F, Torres J, Cabarcos EL, Bassett DC, Habibovic P, Luceron E, et al. Minimally invasive maxillofacial vertical bone augmentation using brushite based cements. *Biomaterials*. 2009;30(2):208-16.
- Abe T, Anan M, Kamida T, Fujiki M. Surgical technique for anterior skull base reconstruction using hydroxyapatite cement and titanium mesh. *Acta Neurochir*. 2009;151(10):1337-8.
- Benson AG, Djalilian HR. Complications of hydroxyapatite bone cement reconstruction of retrosigmoid craniotomy: two cases. *Ear Nose Throat J*. 2009;88(11):E1-4.
- Lee DW, Kim JY, Lew DH. Use of rapidly hardening hydroxyapatite cement for facial contouring surgery. *J Craniofac Surg*. 2010;21:1084-8.
- Singh KA, Burstein FD, Williams JK. Use of hydroxyapatite cement in pediatric craniofacial reconstructive surgery: strategies for avoiding complications. *J Craniofac Surg*. 2010;21(4):1130-5.
- Bambakidis NC, Munyon C, Ko A, Selman WR, Megerian CA. A novel method of

- translabrynthine cranioplasty using hydroxyapatite cement and titanium mesh: a technical report. *Skull Base*. 2010;20(3):157-61.
51. Huang MS, Wu HD, Teng NC, Peng BY, Wu JY, Chang WJ, et al. In vivo evaluation of poorly crystalline hydroxyapatite-based biphasic calcium phosphate bone substitutes for treating dental bony defects. *J Dent Sci*. 2010;5:100-8.
 52. Sanada Y, Fujinaka T, Yoshimine T, Kato A. Optimal reconstruction of the bony defect after frontotemporal craniotomy with hydroxyapatite cement. *J Clin Neurosci*. 2011;18(2):280-2.
 53. Orthodontics - Wikipedia. (accessed in July 2018).
 54. Prosthodontics - Wikipedia. (accessed in July 2018).
 55. Xie C1, Lu H, Li W, Chen FM, Zhao YM. The use of calcium phosphate-based biomaterials in implant dentistry. *J Mater Sci Mater Med*. 2012;23(3):853-62.
 56. Fernández MPR, Gehrke SA, Mazón P, Calvo-Guirado JL, de Aza PN. Implant stability of biological hydroxyapatites used in dentistry. *Materials*. 2017;10(6):644.
 57. McDonagh MS, Whiting PE, Wilson PM, Sutton AJ, Chestnutt I, Cooper J, et al. Systematic review of water fluoridation. *BMJ*. 2000;321(7265):855-9.
 58. Roveri N, Foresti E, Lelli M, Lesci IG. Recent advancements in preventing teeth health hazard: the daily use of hydroxyapatite instead of fluoride. *Rec Pat Biomed Eng*. 2009;2:197-215.
 59. FISCHER RB, MUHLER JC, RING CE. X-ray study of fluorapatite formation during the fluoride treatment of powdered dental enamel. *J Dent Res*. 1956;35(5):773-7.
 60. Dentifrice - Wikipedia. (accessed in July 2018).
 61. McClendon JF, Carpousis A. Prevention of dental caries by brushing the teeth with powdered fluorapatite. *J Dent Res*. 1945;24:199.
 62. Shern RJ, Couet KM, Chow LC, Brown WE. Effects of sequential calcium phosphate-fluoride rinses on fluoride uptake in rats. *J Dent Res*. 1979;58(Spec Issue B):1023.
 63. Shern RJ, Chow LC, Couet KM, Kingman A, Brown WE. Effects of sequential calcium phosphate-fluoride rinses on dental plaque, staining, fluoride uptake, and caries in rats. *J Dent Res*. 1984;63(12):1355-9.
 64. Wefel JS, Harless JD. The use of saturated DCPD in remineralization of artificial caries lesions in vitro. *J Dent Res*. 1987;66(11):1640-3.
 65. Schreiber CT, Shern RJ, Chow LC, Kingman A. Effects of rinses with an acidic calcium phosphate solution on fluoride uptake, caries, and in situ plaque pH in rats. *J Dent Res*. 1988;67(6):959-63.
 66. Kani T, Kani M, Isozaki A, Kato H, Fukuoka Y, Ohashi T, et al. The effect to apatite-containing dentifrices on artificial caries lesions. *J Dent Health*. 1988;38(3):364-5.
 67. Kani T, Kani M, Isozaki A, Shimatani H, Ohashi T, et al. Effect of apatite-containing dentifrices on dental caries in school children. *J Dent Health*. 1989;39:104-9.
 68. Okashi T, Kani T, Isozaki A, Nishida A, Shintani H, Tokumoto T, et al. Remineralization of artificial caries lesions by hydroxyapatite. *J Dent Health*. 1991;41(2):214-23.
 69. Gaffar A, Blake-Haskins J, Mellberg J. In vivo studies with a dicalcium phosphate dihydrate/MFP system for caries prevention. *Int Dent J*. 1993;43(1 Suppl 1):81-8.
 70. Zhang YP, Din CS, Miller S, Nathoo SA, Gaffar A. Intra-oral remineralization of enamel with a MFP/DCPD and MFP/silica dentifrice using surface microhardness. *J Clin Dent*. 1995;6(2):148-53.
 71. Sullivan RJ, Charig A, Blake-Haskins J, Zhang YP, Miller SM, Strannick M, et al. In vivo detection of calcium from dicalcium phosphate dihydrate dentifrices in demineralized human enamel and plaque. *Adv Dent Res*. 1997;11(4):380-7.
 72. Kodaka T, Kobori M, Hirayama A, Masayuki A. Abrasion of human enamel by brushing with a commercial dentifrice containing hydroxyapatite crystals in vitro. *J Electron Microsc*. 1999;48(2):167-72.
 73. Hicks MJ, Flaitz CM. Enamel caries formation and lesion progression with a fluoride dentifrice and a calcium-phosphate containing fluoride dentifrice: a polarized light microscopic study. *ASDC J Dent Child*. 2000;67:21-8.
 74. Sullivan RJ, Masters J, Cantore R, Roberson A, Petrou I, Strannick M, et al. Development of an enhanced anticaries efficacy dual component dentifrice containing sodium fluoride and dicalcium phosphate dihydrate. *Am J Dent*. 2001;14Spec. Iss.3A-11A.
 75. Boneta AE, Neesmith A, Mankodi S, Berkowitz HJ, Sánchez L, Mostler K, et al. The enhanced anticaries efficacy of a sodium fluoride and dicalcium phosphate dihydrate dentifrice in a dual-chambered tube. A 2-year caries clinical study on children in the United States of America. *Am J Dent*. 2001;14Spec. Iss.13A-17A.
 76. Silva MF, Melo EV, Stewart B, de Vizio W, Sintes JL, Petrone ME, et al. The enhanced anticaries efficacy of a sodium fluoride and dicalcium phosphate dihydrate dentifrice in a dual-chambered tube. A 2-year caries clinical study on children in Brazil. *Am J Dent*. 2001;14Spec. Iss.19A-23A.
 77. Niwa M, Sato T, Li W, Aoki H, Aoki H, Daisaku, T. Polishing and whitening properties of toothpaste containing hydroxyapatite. *J Mater Sci Mater Med*. 2001;12(3):277-81.
 78. Sintes JL, Elías-Boneta A, Stewart B, Volpe AR, Lovett J. Anticaries efficacy of a sodium monofluorophosphate dentifrice containing xylitol in a dicalcium phosphate dihydrate base. A 30-month caries clinical study in Costa Rica. *Am J Dent*. 2002;15(4):215-9.
 79. Kim BI, Jeong SH, Jang SO, Kim KN, Kwon HK, Park YD. Tooth whitening effect of toothpastes containing nano-hydroxyapatite. *Key Eng Mater*. 2006;309-311:541-4.
 80. Jeong SH, Jang SO, Kim KN, Kwon HK, Park YD, Kim BI. Remineralization potential of new toothpaste containing nano-hydroxyapatite. *Key Eng Mater*. 2006;309-311:537-40.
 81. Lv K, Zhang J, Meng X, Li X. Remineralization effect of the nano-HA toothpaste on artificial caries. *Key Eng Mater*. 2007;330-332:267-70.
 82. Jeong SH, Hong SJ, Choi CH, Kim BI. Effect of new dentifrice containing nano-sized carbonated apatite on enamel remineralization. *Key Eng Mater*. 2007;330-332:291-4.
 83. Roveri N, Battistella E, Bianchi CL, Foltran I, Foresti E, Iafisco M, et al. Surface enamel remineralization: biomimetic apatite nanocrystals and fluoride ions different effects. *J Nanomater*. 2009;2009:746383(9 pages).
 84. Kim SH, Park JB, Lee CW, Koo KT, Kim TI, Seol YJ, et al. The clinical effects of a hydroxyapatite containing toothpaste for dentine hypersensitivity. *J Korean Acad Periodontol*. 2009;39:87-94.
 85. Tschoppe P, Zandim DL, Martus P, Kielbassa AM. Enamel and dentine remineralization by nano-hydroxyapatite toothpastes. *J Dent*. 2011;39(6):430-7.
 86. Najibfard K, Ramalingam K, Chedjieu I, Amaechi BT. Remineralization of early caries by a nano-hydroxyapatite dentifrice. *J Clin Dent*. 2011;22(5):139-43.
 87. Wang CJ, Zhang YF, Wei J, Wei SC. Repair of artificial enamel lesions by nano fluorapatite paste containing fluorin. *J Clin Rehabil Tiss Eng Res*. 2011;15:6346-50.
 88. Kovtu A, Kozlova D, Ganesan K, Biewald C, Seipold N, Gaengler P, et al. Chlorhexidine-loaded calcium phosphate nanoparticles for dental maintenance treatment: combination of mineralising and antibacterial effects. *RSC Adv*. 2012;2:870-5.
 89. Vanichvatana S, Auychai P. Efficacy of two calcium phosphate pastes on the remineralization of artificial caries: a randomized controlled double-blind in situ study. *Int J Oral Sci*. 2013;5(4):224-8.
 90. Sun Y, Li X, Deng Y, Sun JN, Tao D, Chen H, et al. Mode of action studies on the formation of enamel minerals from a novel toothpaste containing calcium silicate and sodium phosphate salts. *J Dent*. 2014;42(Suppl 1):S30-8.
 91. Browning WD, Cho SD, Deschepper EJ. Effect of a nano-hydroxyapatite paste on bleaching-related tooth sensitivity. *J Esthet Restor Dent*. 2012;24(4):268-76.
 92. Comar LP, Souza BM, Gracindo LF, Buzalaf MA, Magalhães AC. Impact of experimental nano-HAP pastes on bovine enamel and dentin submitted to a pH cycling model. *Braz Dent J*. 2013;24(3):273-8.
 93. Hannig C, Basche S, Burghardt T, Al-Ahmad A, Hannig M. Influence of a mouthwash containing hydroxyapatite microclusters on bacterial adherence in situ. *Clin Oral Invest*. 2013;17(3):805-14.
 94. Kensche A, Holder C, Basche S, Tahan N, Hannig C, Hannig M. Efficacy of a mouthrinse based on hydroxyapatite to reduce initial bacterial colonisation in situ. *Arch Oral Biol*. 2017;80:18-26.

95. de Carvalho FG, Vieira BR, Santos RL, Carlo HL, Lopes PQ, de Lima BA. In vitro effects of nano-hydroxyapatite paste on initial enamel carious lesions. *Pediatr Dent*. 2014;36:85-9.
96. Mielczarek A, Michalik J. The effect of nano-hydroxyapatite toothpaste on enamel surface remineralization. An in vitro study. *Am J Dent*. 2014;27(6):287-90.
97. Vyavhare S, Sharma DS, Kulkarni VK. Effect of three different pastes on remineralization of initial enamel lesion: an in vitro study. *J Clin Pediatr Dent*. 2015;39(2):149-60.
98. Souza BM, Comar LP, Vertuan M, Neto CF, Buzalaf MA, Magalhães AC. Effect of an experimental paste with hydroxyapatite nanoparticles and fluoride on dental demineralisation and remineralisation in situ. *Caries Res*. 2015;49(5):499-507.
99. Hill RG, Gillam DG, Chen X. The ability of a nano hydroxyapatite toothpaste and oral rinse containing fluoride to protect enamel during an acid challenge using 19F solid state NMR spectroscopy. *Mater Lett*. 2015;156:69-71.
100. Gomes YSL, Alexandrino LD, Alencar CM, Alves EB, Faial KC, Silva CM. In situ Effect of Nanohydroxyapatite Paste in Enamel Teeth Bleaching. *J Contemp Dent Pract*. 2017;18(11):996-1003.
101. Nakata T, Kitasako Y, Sadr A, Nakashima S, et al. Effect of a calcium phosphate and fluoride paste on prevention of enamel demineralization. *Dent Mater J*. 2018;37(1):65-70.
102. Hiller KA, Buchalla W, Grillmeier I, Neubauer C, Schmalz G. In vitro effects of hydroxyapatite containing toothpastes on dentin permeability after multiple applications and ageing. *Sci Rep*. 2018;8:4888.
103. Esteves-Oliveira M, Santos NM, Meyer-Lueckel H, Wierichs RJ, Rodrigues JA. Caries-preventive effect of anti-erosive and nano-hydroxyapatite-containing toothpastes in vitro. *Clin Oral Investig*. 2017;21:291-300.
104. Pickel FD, Bilotti A. The effects of a chewing gum containing dicalcium phosphate on salivary calcium and phosphate. *Ala J Med Sci*. 1965;2(3):286-7.
105. Finn SB, Jamison HC. The effect of a dicalcium phosphate chewing gum on caries incidence in children: 30-month results. *J Am Dent Assoc*. 1967;74(5):987-95.
106. Finn SB. The role of a dicalcium phosphate chewing gum in the control of human dental caries. *Int Dent J*. 1967;17(2):339-52.
107. Richardson AS, Hole LW, McCombie F, Kolthammer J. Anticariogenic effect of dicalcium phosphate dihydrate chewing gum: results after two years. *J Canadian Dent Assoc*. 1972;38(6):213-8.
108. Wilson CJ. The effect of calcium sucrose phosphates chewing gum on caries incidence in children. *J Wis Dent Assoc*. 1975;51(11):521-5.
109. Chow LC1, Takagi S, Shern RJ, Chow TH, Takagi KK, Sieck BA. Effects on whole saliva of chewing gums containing calcium phosphates. *J Dent Res*. 1994;73(1):26-32.
110. Vogel GL, Zhang Z, Carey CM, Ly A, Chow LC, Proskin HM. Composition of plaque and saliva following a sucrose challenge and use of an a-tricalcium-phosphate-containing chewing gum. *J Dent Res*. 1998;77(3):518-24.
111. Vogel GL, Zhang Z, Carey CM, Ly A, Chow LC, Proskin HM. Composition of plaque and saliva following use of an a-tricalcium-phosphate-containing chewing gum and a subsequent sucrose challenge. *J Dent Res*. 2000;79(1):58-62.
112. Shen P, Cai F, Nowicki A, Vincent J, Reynolds EC. Remineralization of enamel subsurface lesions by sugar-free chewing gum containing casein phosphopeptide-amorphous calcium phosphate. *J Dent Res*. 2001;80(12):2066-70.
113. Iijima Y, Cai F, Shen P, Walker G, Reynolds C, Reynolds EC. Acid resistance of enamel subsurface lesions remineralized by a sugar-free chewing gum containing casein phosphopeptide-amorphous calcium phosphate. *Caries Res*. 2004;38(6):551-6.
114. Itthagarun A, King NM, Yiu C, Dawes C. The effect of chewing gums containing calcium phosphates on the remineralization of artificial caries-like lesions in situ. *Caries Res*. 2005;39(3):251-4.
115. Cai F, Manton DJ, Shen P, Walker GD, Cross KJ, Yuan Y, et al. Effect of addition of citric acid and casein phosphopeptide-amorphous calcium phosphate to a sugar-free chewing gum on enamel remineralization in situ. *Caries Res*. 2007;41(5):377-83.
116. Morgan MV, Adams GG, Bailey DL, Tsao CE, Fischman SL, Reynolds EC. The anticariogenic effect of sugar-free gum containing CPP-ACP nanocomplexes on approximal caries determined using digital bitewing radiography. *Caries Res*. 2008;42(3):171-84.
117. Thaweboon S, Nakornchai S, Miyake Y, Yanagisawa T, Thaweboon B, Soampon S. Remineralization of enamel subsurface lesions by xylitol chewing gum containing funoran and calcium hydrogenphosphate. *Southeast Asian J Trop Med Public Health*. 2009;40(2):345-53.
118. Dodds MW1, Chidichimo D, Haas MS. Delivery of active agents from chewing gum for improved remineralization. *Adv Dent Res*. 2012;24(2):58-62.
119. Shammukha G, Santhosh BP, Preeti J, Naveen B, Inderjith G, Santhosh B, Sakari NB. Evaluation of changes in salivary concentration of calcium by CPP-ACP containing chewing gum – a clinical trial. *Int J Adv Res Oral Sci*. 2012;1:1-7.
120. Porciani PF, Chazine M, Grandini S. A clinical study of the efficacy of a new chewing gum containing calcium hydroxyapatite in reducing dentin hypersensitivity. *J Clin Dent*. 2014;25(2):32-6.
121. Emamieh S, Khaterizadeh Y, Goudarzi H, Ghasemi A, Baghban AA, Torabzadeh H. The effect of two types chewing gum containing casein phosphopeptide-amorphous calcium phosphate and xylitol on salivary *Streptococcus mutans*. *J Conserv Dent*. 2015;18(3):192-5.
122. Sultan S, Chaitra TR, Chaudhary S, Manuja N, Kaur H, Amit SA, et al. Effect of ACP-CPP chewing gum and natural chewable products on plaque pH, calcium and phosphate concentration. *J Clin Diagn Res*. 2016;10(4):ZC13-7.
123. Hasnamudhia F, Bachtar EW, Sahlan M, Soekanto SA. The effect of CPP-ACP-propolis chewing gum on calcium and phosphate ion release on caries-active subjects' saliva and the formation of *Streptococcus mutans* biofilm. *J Phys Conf Ser*. 2017;884:012137.
124. Cochrane NJ, Cai F, Huq NL, Burrow MF, Reynolds EC. New approaches to enhanced remineralization of tooth enamel. *J Dent Res*. 2010;89(11):1187-97.
125. Head J. A study of saliva and its action on tooth enamel in reference to its hardening and softening. *J Am Med Ass*. 1912;59(24):2118-22.
126. Koulourides T, Cueto H, Pigman W. Rehardening of softened enamel surfaces of human teeth by solutions of calcium phosphates. *Nature*. 1961;189:226-7.
127. Silverstone LM, Johnson NW. The effect on sound human enamel of exposure to calcifying fluids in vitro. *Caries Res*. 1971;5(4):323-42.
128. Silverstone LM. Remineralization of human enamel in vitro. *Proc R Soc Med*. 1972;65(10):906-8.
129. Cate JM, Arends J. Remineralization of artificial enamel lesions in vitro. *Caries Res*. 1977;11(5):277-86.
130. ten Cate JM, Arends J. Remineralization of artificial enamel lesions in vitro. II. Determination of activation energy and reaction order. *Caries Res*. 1978;12(4):213-22.
131. ten Cate JM, Arends J. Remineralization of artificial enamel lesions in vitro: III. A study of the deposition mechanism. *Caries Res*. 1980;14(6):351-8.
132. ten Cate JM, Jongebloed WL, Arends J. Remineralization of artificial enamel lesions in vitro. IV. Influence of fluorides and diphosphonates on short- and long-term remineralization. *Caries Res*. 1981;15(1):60-9.
133. Yamagishi K, Onuma K, Suzuki T, Okada F, Tagami J, Otsuki M, et al. Materials chemistry: a synthetic enamel for rapid tooth repair. *Nature*. 2005;433(7028):819.
134. Kim MY, Kwon HK, Choi CH, Kim BI. Combined effects of nano-hydroxyapatite and NaF on remineralization of early caries lesion. *Key Eng Mater*. 2007;330-332:1347-50.
135. Lu K, Meng X, Zhang J, Li X, Zhou M. Inhibitory effect of synthetic nano-hydroxyapatite on dental caries. *Key Eng Mater*. 2007;336-338:1538-41.
136. Zhen T, Hongkun W, Anchun M, Zhiqin C, Yubao L. Effect of apatite nanoparticles on remineralization of the demineralized human dentin. *Key Eng*

- Mater. 2007;330-332:1381-4.
137. Rimondini L, Palazzo B, Iafisco M, Canegallo L, Demarosi F, Merlo M, et al. The remineralizing effect of carbonate-hydroxyapatite nanocrystals on dentine. *Mater Sci Forum*. 2007;539-543:602-5.
 138. Roveri N, Battistella E, Foltran I, Foresti E, Iafisco M, Lelli M, et al. Synthetic biomimetic carbonate-hydroxyapatite nanocrystals for enamel remineralization. *Adv Mater Res*. 2008;47-50:821-4.
 139. Huang SB, Gao SS, Yu HY. Effect of nano-hydroxyapatite concentration on remineralization of initial enamel lesion in vitro. *Biomed Mater*. 2009;4(3):034104.
 140. Yin Y, Yun S, Fang J, Chen H. Chemical regeneration of human tooth enamel under near-physiological conditions. *Chem Commun*. 2009;(39):5892-4.
 141. Lv KL, Yuan HW, Meng XC, Li XY. Remineralized evaluation of nano-hydroxyapatite to artificial caries. *Adv Mater Res*. 2010;105-106:576-9.
 142. Huang S, Gao S, Cheng L, Yu H. Remineralization potential of nano-hydroxyapatite on initial enamel lesions: an in vitro study. *Caries Res*. 2011;45(5):460-8.
 143. Wu D1, Yang J, Li J, Chen L, Tang B, Chen X, et al. Hydroxyapatite-anchored dendrimer for in situ remineralization of human tooth enamel. *Biomaterials*. 2013;34(21):5036-47.
 144. Haghighi R, Rezvani MB, Salehi Zeinabadi M. Comparison of nano-hydroxyapatite and sodium fluoride mouthrinse for remineralization of incipient carious lesions. *J Dent (Tehran)*. 2014;11(4):406-10.
 145. Besinis A, van Noort R, Martin N. Remineralization potential of fully demineralized dentin infiltrated with silica and hydroxyapatite nanoparticles. *Dent Mater*. 2014;30(3):249-62.
 146. Kensche A, Pötschke S, Hannig C, Richter G, Hoth-Hannig W, Hannig M. Influence of Calcium Phosphate and Apatite Containing Products on Enamel Erosion. *ScientificWorldJournal*. 2016;2016:7959273.
 147. Chow LC, Takagi S. Remineralization of root lesions with concentrated calcium and phosphate solutions. *Dent Mater J*. 1995;14:31-6.
 148. Reynolds EC. Remineralization of enamel subsurface lesions by casein phosphopeptide-stabilized calcium phosphate solutions. *J Dent Res*. 1997;76(9):1587-95.
 149. Wen Z, Chen J, Wang H, Zhong S, Hu Y, Wang Z, et al. Abalone water-soluble matrix for self-healing biomineralization of tooth defects. *Mater Sci Eng C Mater Biol Appl*. 2016;67:182-7.
 150. Wang HY, Sun KN, Shan T, Yang XQ, Zhao Y, Liang YJ. Biomimetic synthesis of fluorapatite coating. *Adv Mater Res*. 2011;306-307:63-71.
 151. Ning TY, Xu XH, Zhu LF, Zhu XP, Chu CH, Liu LK, et al. Biomimetic mineralization of dentin induced by agarose gel loaded with calcium phosphate. *J Biomed Mater Res B Appl Biomater*. 2012;100:138-44.
 152. Tian K, Peng M, Wu P, Liao CH, Huang FY. Biomineralization of the hydroxyapatite with 3D-structure for enamel reconstruction. *Adv Mater Res*. 2012;391-392:633-7.
 153. Gu H, Mijares D, Zhao Z, Boylan R, Ling J, LeGeros RZ. Experimental antibacterial and mineralizing calcium phosphate-based treatment for dentin surfaces. *J Biomater Appl*. 2013;27(7):783-90.
 154. Chen L, Liang K, Li J, Wu D, Zhou X, Li J. Regeneration of biomimetic hydroxyapatite on etched human enamel by anionic PAMAM template in vitro. *Arch Oral Biol*. 2013;58(8):975-80.
 155. Cao CY, Mei ML, Li QL, Lo EC, Chu CH. Agarose hydrogel biomimetic mineralization model for the regeneration of enamel prismatic tissue. *ACS Appl Mater Interfaces*. 2014;6:410-20.
 156. Wu XT, Mei ML, Li QL, Cao CY, Chen JL, Xia R, et al. A direct electric field-aided biomimetic mineralization system for inducing the remineralization of dentin collagen matrix. *Materials*. 2015;8(11):7889-99.
 157. Wang Q, Liu S, Gao X, Wei Y, Deng X, Chen H, et al. Remineralizing efficacy of fluorohydroxyapatite gel on artificial dental caries lesion. *J Nanomater*. 2015;2015:380326.
 158. Zaharia A, Musat V, Anghel EM, Atkinson I, Mocioiu OC, Busila M, et al. Biomimetic chitosan-hydroxyapatite hybrid biocoatings for enamel remineralization. *Ceram Int*. 2017;43(14):11390-402.
 159. Singh ML, Papas AS. Long-term clinical observation of dental caries in salivary hypofunction patients using a supersaturated calcium-phosphate remineralizing rinse. *J Clin Dent*. 2009;20(3):87-92.
 160. Lee HJ, Min JH, Choi CH, Kwon HG, Kim BI. Remineralization potential of sports drink containing nano-sized hydroxyapatite. *Key Eng Mater*. 2007;330-332:275-8.
 161. Min JH, Kwon HK, Kim BI. The addition of nano-sized hydroxyapatite to a sports drink to inhibit dental erosion: in vitro study using bovine enamel. *J Dent*. 2011;39(9):629-35.
 162. Luo J, Ning T, Cao Y, Zhu X, Xu X, Tang X, et al. Biomimetic enamel remineralization by hybridization calcium- and phosphate-loaded liposomes with amelogenin-inspired peptide. *Key Eng Mater*. 2012;512-515:1727-30.
 163. Liang K, Zhou H, Weir MD, Bao C, Reynolds MA, Zhou X, et al. Poly(amido amine) and calcium phosphate nanocomposite remineralization of dentin in acidic solution without calcium phosphate ions. *Dent Mater*. 2017;33(7):818-29.
 164. Weir MD, Ruan J, Zhang N, Chow LC, Zhang K, Chang X, et al. Effect of calcium phosphate nanocomposite on in vitro remineralization of human dentin lesions. *Dent Mater*. 2017;33(9):1033-44.
 165. Xiao Z, Que K, Wang H, An R, Chen Z, Qiu Z, et al. Rapid biomimetic remineralization of the demineralized enamel surface using nano-particles of amorphous calcium phosphate guided by chimaeric peptides. *Dent Mater*. 2017;33(11):1217-28.
 166. Liang K, Weir MD, Reynolds MA, Zhou X, Li J, Xu HHK. Poly (amido amine) and nano-calcium phosphate bonding agent to remineralize tooth dentin in cyclic artificial saliva/lactic acid. *Mater Sci Eng C*. 2017;72:7-17.
 167. Jandt KD. Probing the future in functional soft drinks on the nanometre scale – towards tooth friendly soft drinks. *Trends Food Sci Technol*. 2006;17(5):263-71.
 168. Lippert F, Parker DM, Jandt KD. In situ remineralisation of surface softened human enamel studied with AFM nanoindentation. *Surface Sci*. 2004;553(1-3):105-14.
 169. Lippert F, Parker DM, Jandt KD. In vitro demineralization / remineralization cycles at human tooth enamel surfaces investigated by AFM and nanoindentation. *J Colloid Interf Sci*. 2004;280(2):442-8.
 170. Lippert F, Parker DM, Jandt KD. Toothbrush abrasion of surface softened enamel studied with tapping mode AFM and AFM nanoindentation. *Caries Res*. 2004;38:464-72.
 171. Li X, Wang J, Joiner A, Chang J. The remineralisation of enamel: a review of the literature. *J Dent*. 2014;42(Suppl 1):S12-20.
 172. Niu LN, Zhang W, Pashley DH, Breschi L, Mao J, Chen JH, et al. Biomimetic remineralization of dentin. *Dent Mater*. 2014;30:77-96.
 173. Cao CY, Mei ML, Li QL, Lo ECM, Chu CH. Methods for biomimetic mineralisation of human enamel: a systematic review. *Materials*. 2015;8(6):2873-86.
 174. Dentin hypersensitivity - Wikipedia. (accessed in July 2018).
 175. Enax J, Epple M. Synthetic Hydroxyapatite as a Biomimetic Oral Care Agent. *Oral Health Prev Dent*. 2018;16:7-19.
 176. Hüttemann RW, Dönges H. Untersuchungen zur Therapie überempfindlicher Zahnhälse mit Hydroxylapatit. *Dtsch Zahnärztl Z*. 1987;42:486-8.
 177. Sugawara A, Chow LC, Takagi S, Nishiyama M, Ohashi M. [An in vitro study of dentin hypersensitivity using calcium phosphate cement]. *Shika Zairyo Kikai*. 1989;8(2):282-94.
 178. Yates R, Owens J, Jackson R, Newcombe RG, Addy M. A split-mouth placebo-controlled study to determine the effect of amorphous calcium phosphate

- in the treatment of dentine hypersensitivity. *J Clin Periodontol*. 1998;25(8):687-92.
179. Suge T, Ishikawa K, Kawasaki A, Suzuki K, Matsuo T, Noiri Y, et al. Calcium phosphate precipitation method for the treatment of dentin hypersensitivity. *Am J Dent*. 2002;15(4):220-6.
 180. Geiger S, Matalon S, Blasbalg J, Tung M, Eichmiller FC. The clinical effect of amorphous calcium phosphate (ACP) on root surface hypersensitivity. *Oper Dent*. 2003;28(5):496-500.
 181. Shetty S, Kohad R, Yeltiwar R. Hydroxyapatite as an in-office agent for tooth hypersensitivity: a clinical and scanning electron microscopic study. *J Periodontol*. 2010;81(12):1781-9.
 182. Low SB, Allen EP, Kontogiorgos ED. Reduction in dental hypersensitivity with nano-hydroxyapatite, potassium nitrate, sodium monofluorophosphate and antioxidants. *Open Dent J*. 2015;9:92-7.
 183. Vano M, Derchi G, Barone A, Pinna R, Usai P, Covani U. Reducing dentine hypersensitivity with nano-hydroxyapatite toothpaste: a double-blind randomized controlled trial. *Clin Oral Investig*. 2018;22:313-20.
 184. Mehta D, Gowda V, Finger WJ, Sasaki K. Randomized, placebo-controlled study of the efficacy of a calcium phosphate containing paste on dentin hypersensitivity. *Dent Mater*. 2015;31(11):1298-303.
 185. Zhou J, Chiba A, Scheffel DL, Hebling J, Agee K, Niu LN, et al. Effects of a Dicalcium and Tetracalcium Phosphate-Based Desensitizer on In Vitro Dentin Permeability. *PLoS One*. 2016;11(6):e0158400.
 186. Moogi P, Rupesh MC, Mehta D, Finger WJ, Sasaki K. A novel desensitizer paste containing calcium phosphate: randomized, placebo-controlled, double-blinded and 6 months trial. *World J Dent*. 2017;8(6):440-4.
 187. Shetty R, Bhat AN, Mehta D, Finger WJ. Effect of a calcium phosphate desensitizer on pre- and postcementation sensitivity of teeth prepared for full-coverage restorations: a randomized, placebo-controlled clinical study. *Int J Prosthodont*. 2017;30:38-42.
 188. Medvecky L, Stulajterova R, Giretova M, Mincik J, Vojtko M, Balko J, et al. Effect of tetracalcium phosphate/monetite toothpaste on dentin remineralization and tubule occlusion in vitro. *Dent Mater*. 2018;34(3):442-51.
 189. Arafa A. Synergetic remineralization effectiveness of calcium, phosphate and fluoride based systems in primary teeth. *Pediatric Dent J*. 2017;27:65-71.
 190. Sharma H, Gupta C, Thakur S, Srivastava S. Comparative evaluation of calcium phosphate-based varnish and resin-modified glass ionomer-based varnish in reducing dentinal hypersensitivity: a randomized controlled clinical trial. *Eur J Dent*. 2017;11(4):491-5.
 191. Milosavljevic EL. Calcium metabolism in its relation to dental pathology calciprival odontopathia. *Int J Orthodontia Oral Surg Radiography*. 1925;11(2):111-23.
 192. Monroe EA, Votava W, Bass DB, McMullen J. New calcium phosphate ceramic material for bone and tooth implants. *J Dent Res*. 1971;50(4):860-1.
 193. Nery EB, Lynch KL, Hirthe WM, Mueller KH. Bioceramic implants in surgically produced infrabony defects. *J Periodontol*. 1975;46(6):328-47.
 194. Nery EB, Lynch KL, Rooney GE. Alveolar ridge augmentation with tricalcium phosphate ceramic. *J Prosthet Dent*. 1978;40(6):668-75.
 195. Denissen HW, de Groot K. Immediate dental root implants from synthetic dense calcium hydroxylapatite. *J Prosthet Dent*. 1979;42(5):551-6.
 196. LeGeros RZ. Calcium phosphate materials in restorative dentistry: a review. *Adv Dent Res*. 1988;2(1):164-80.
 197. Kouassi M, Michalesco P, Lacoste-Armynot A, Boudeville P. Antibacterial effect of a hydraulic calcium phosphate cement for dental applications. *J Endod*. 2003;29(2):100-3.
 198. Mehdawi I, Neel EA, Valappil SP, Palmer G, Salih V, Pratten J, et al. Development of remineralizing, antibacterial dental materials. *Acta Biomater*. 2009;5(7):2525-39.
 199. Koch KA, Brave DG, Nasseh AA. Bioceramic technology: closing the endo-restorative circle, Part I. *Dent Today*. 2010;29(2):100-5.
 200. Xu HH, Sun L, Weir MD, Takagi S, Chow LC, Hockey B. Effects of incorporating nanosized calcium phosphate particles on properties of whisker-reinforced dental composites. *J Biomed Mater Res B Appl Biomater*. 2007;81:116-25.
 201. Dickens-Venz SH, Takagi S, Chow LC, Bowen RL, Johnston AD, Dickens B. Physical and chemical properties of resin-reinforced calcium phosphate cements. *Dent Mater*. 1994;10(2):100-6.
 202. Lee YK, Lim BS, Kim CW. Mechanical properties of calcium phosphate based dental filling and regeneration materials. *J Oral Rehabil*. 2003;30(4):418-25.
 203. Briak HE, Durand D, Nurit J, Munier S, Pauvert B, Boudeville P. Study of a hydraulic dicalcium phosphate dihydrate/calcium oxide-based cement for dental applications. *J Biomed Mater Res*. 2002;63(4):447-53.
 204. Dickens SH, Flaim GM, Takagi S. Mechanical properties and biochemical activity of remineralizing resin-based Ca-PO₄ cements. *Dent Mater*. 2003;19(6):558-66.
 205. Michalesco P, Kouassi M, Briak HE, Armynot A, Boudeville P. Antimicrobial activity and tightness of a DCPD - CaO-based hydraulic calcium phosphate cement for root canal filling. *J Biomed Mater Res B Appl Biomater*. 2005;74(2):760-7.
 206. Xu HH, Takagi S, Sun L, Hussain L, Chow LC, Guthrie WF, et al. Development of a nonrigid, durable calcium phosphate cement for use in periodontal bone repair. *J Am Dent Assoc*. 2006;137(8):1131-8.
 207. Sugawara A, Fujikawa K, Takagi S, Chow LC. Histological analysis of calcium phosphate bone grafts for surgically created periodontal bone defects in dogs. *Dent Mater J*. 2008;27(6):787-94.
 208. Wei J, Wang J, Shan W, Liu X, Ma J, Liu C, et al. Development of fluorapatite cement for dental enamel defects repair. *J Mater Sci Mater Med*. 2011;22(6):1607-14.
 209. Wei J, Wang J, Liu X, Ma J, Liu C, Fang J, et al. Preparation of fluoride substituted apatite cements as the building blocks for tooth enamel restoration. *Appl Surf Sci*. 2011;257(11):7887-92.
 210. Thein-Han W, Liu J, Xu HH. Calcium phosphate cement with biofunctional agents and stem cell seeding for dental and craniofacial bone repair. *Dent Mater*. 2012;28(10):1059-70.
 211. Panahi F, Rabiee SM, Shidpour R. Synergic effect of chitosan and dicalcium phosphate on tricalcium silicate-based nanocomposite for root-end dental application. *Mater Sci Eng C Mater Biol Appl*. 2017;80:631-41.
 212. Yoshikawa M, Hayami S, Tsuji I, Toda T. Histopathological study of a newly developed root canal sealer containing tetracalcium-dicalcium phosphates and 1.0% chondroitin sulfate. *J Endod*. 1997;23(3):162-6.
 213. Xu HH1, Sun L, Weir MD, Antonucci JM, Takagi S, Chow LC, et al. Nano DCPA-whisker composites with high strength and Ca and PO₄ release. *J Dent Res*. 2006;85(8):722-7.
 214. Xu HH1, Weir MD, Sun L, Takagi S, Chow LC. Effects of calcium phosphate nanoparticles on Ca-PO₄ composite. *J Dent Res*. 2007;86(4):378-83.
 215. Xu HH, Weir MD, Sun L. Nanocomposites with Ca and PO₄ release: effects of reinforcement, dicalcium phosphate particle size and silanization. *Dent Mater*. 2007;23(12):1482-91.
 216. Chen MH. Update on dental nanocomposites. *J Dent Res*. 2010;89(6):549-60.
 217. Jean AH, Pouezat JA, Daculsi G. Pulpal response to calcium phosphate materials. In vivo study of calcium phosphate materials in endodontics. *Cell Mater*. 1993;3(2):193-200.
 218. Stefanic M, Krnel K, Pribosic I, Kosmac T. Rapid biomimetic deposition of octacalcium phosphate coatings on zirconia ceramics (Y-TZP) for dental implant applications. *Appl Surf Sci*. 2012;258(10):4649-56.
 219. Bao L, Liu J, Shi F, Jiang Y, Liu G. Preparation and characterization of TiO₂ and Si-doped octacalcium phosphate composite coatings on zirconia ceramics

- (Y-TZP) for dental implant applications. *Appl Surf Sci.* 2014;290:48-52.
220. Miura K, Matsui K, Kawai T, Kato Y, Matsui A, Suzuki O, et al. Octacalcium phosphate collagen composites with titanium mesh facilitate alveolar augmentation in canine mandibular bone defects. *Int J Oral Maxillofac Surg.* 2012;41(9):1161-9.
 221. Kawai T, Matsui K, Ezoe Y, Kajii F, Suzuki O, Takahashi T, et al. Efficacy of octacalcium phosphate collagen composite for titanium dental implants in dogs. *Materials.* 2018;11(2):229.
 222. Sena M, Yamashita Y, Nakano Y, Ohgaki M, Nakamura S, Yamashita K, et al. Octacalcium phosphate-based cement as a pulp-capping agent in rats. *Oral Surg Oral Med Oral Pathol Oral Radiol Endod.* 2004;97(6):749-55.
 223. Imamura Y, Tanaka Y, Nagai A, Yamashita K, Takagi Y. Self-sealing ability of OCP-mediated cement as a deciduous root canal filling materia. *Dent Mater J.* 2010;29(5):582-8.
 224. Kamakura S, Sasano Y, Nakamura M, Suzuki O, Ohki H, Kagayama M, et al. Initiation of alveolar ridge augmentation in the rat mandible by subperiosteal implantation of octacalcium phosphate. *Arch Oral Biol.* 1996;41(11):1029-038.
 225. Kamakura S, Sasano Y, Homma H, Suzuki O, Kagayama M, Motegi K. Experimental oral pathology: implantation of octacalcium phosphate nucleates isolated bone formation in rat skull defects. *Oral Dis.* 2001;7(4):259-65.
 226. Wang X, Suzawa T, Miyauchi T, Zhao B, Yasuhara R, Anada T, et al. Synthetic octacalcium phosphate-enhanced reparative dentine formation via induction of odontoblast differentiation. *J Tissue Eng Regen Med.* 2015;9(11):1310-20.
 227. Ambrosio AM, Sahota JS, Khan Y, Laurencin CT. A novel amorphous calcium phosphate polymer ceramic for bone repair: I. Synthesis and characterization. *J Biomed Mater Res.* 2001;58(3):295-301.
 228. Skrtic D, Antonucci JM, Eanes ED. Effect of the monomer and filler system on the remineralizing potential of bioactive dental composites based on amorphous calcium phosphate. *Polym Adv Technol.* 2001;12(6):369-79.
 229. Skrtic D, Antonucci JM, Eanes ED. Amorphous calcium phosphate-based bioactive polymeric composites for mineralized tissue regeneration. *J Res Natl Inst Stands Technol.* 2003;108(3):167-82.
 230. Skrtic D, Antonucci JM, Eanes ED, Eidelman N. Dental composites based on hybrid and surface-modified amorphous calcium phosphates. *Biomaterials.* 2004;25(7-8):1141-50.
 231. Skrtic D, Antonucci JM. Matrix resin effects on selected physicochemical properties of amorphous calcium phosphate composites. *J Bioact Compat Polym.* 2005;20:29-49.
 232. Skrtic D, Antonucci JM, Eanes ED. Improved properties of amorphous calcium phosphate fillers in remineralizing resin composites. *Dent Mater.* 1996;12(5):295-301.
 233. Skrtic D, Antonucci JM. Dental composites based on amorphous calcium phosphate – resin composition/physicochemical properties study. *J Biomater Appl.* 2007;21(4):375-93.
 234. Skrtic D, Hailer AW, Takagi S, Antonucci JM, Eanes ED. Quantitative assessment of the efficacy of amorphous calcium phosphate/methacrylate composites in remineralizing caries-like lesions artificially produced in bovine enamel. *J Dent Res.* 1996;75(9):1679-86.
 235. Oshiro M1, Yamaguchi K, Takamizawa T, Inage H, Watanabe T, Irokawa A, et al. Effect of CPP-ACP paste on tooth mineralization: an FE-SEM study. *J Oral Sci.* 2007;49(2):115-20.
 236. O'Donnell JN, Schumacher GE, Antonucci JM, Skrtic D. Adhesion of amorphous calcium phosphate composites bonded to dentin: a study in failure modality. *J Biomed Mater Res B Appl Biomater.* 2009;90:238-49.
 237. Antonucci JM, O'Donnell JN, Schumacher GE, Skrtic D. Amorphous calcium phosphate composites and their effect on composite–adhesive–dentin bonding. *J Adhes Sci Technol.* 2009;23(7):1133-47.
 238. Walker GD, Cai F, Shen P, Adams GG, Reynolds C, Reynolds EC. Casein phosphopeptide-amorphous calcium phosphate incorporated into sugar confections inhibits the progression of enamel subsurface lesions in situ. *Caries Res.* 2010;44:33-40.
 239. Xu HH, Moreau JL, Sun L, Chow LC. Nanocomposite containing amorphous calcium phosphate nanoparticles for caries inhibition. *Dent Mater.* 2011;27(8):762-9.
 240. Uysal T, Amasyali M, Koyuturk AE, Sagdic D. Efficiency of amorphous calcium phosphate-containing orthodontic composite and resin modified glass ionomer on demineralization evaluated by a new laser fluorescence device. *Eur J Dent.* 2009;3(2):127-34.
 241. Reynolds EC. Anticariogenic complexes of amorphous calcium phosphate stabilized by casein phosphopeptides: a review. *Spec Care Dentist.* 1998;18:8-16.
 242. Tung MS, Eichmiller FC. Dental applications of amorphous calcium phosphates. *J Clin Dent.* 1999;10(1 Spec No):1-6.
 243. Uysal T, Ustidal A, Nur M, Catalbas B. Bond strength of ceramic brackets bonded to enamel with amorphous calcium phosphate-containing orthodontic composite. *Eur J Orthod.* 2010;32(3):281-4.
 244. Dunn WJ. Shear bond strength of an amorphous calcium-phosphate-containing orthodontic resin cement. *Am J Orthod Dentofacial Orthop.* 2007;131(2):243-7.
 245. Keçik D, Çehreli SB, Sar Ç, Ünver B. Effect of acidulated phosphate fluoride and casein phosphopeptide-amorphous calcium phosphate application on shear bond strength of orthodontic brackets. *Angle Orthod.* 2008;78:129-33.
 246. Foster JA, Berzins DW, Bradley TG. Bond strength of an amorphous calcium phosphate-containing orthodontic adhesive. *Angle Orthod.* 2008;78(2):339-44.
 247. Sun W, Zhang F, Guo J, Wu J, Wu W. Effects of amorphous calcium phosphate on periodontal ligament cell adhesion and proliferation in vitro. *J Med Biol Eng.* 2008;28(2):107-12.
 248. Uysal T, Ulker M, Baysal A, Usumez S. Microleakage between composite-wire and composite-enamel interfaces of flexible spiral wire retainers. Part 2: Comparison of amorphous calcium phosphate-containing adhesive with conventional lingual retainer composite. *Eur J Orthod.* 2009;31(6):652-7.
 249. Uysal T, Ulker M, Akdogan G, Ramoglu SI, Yilmaz E. Bond strength of amorphous calcium phosphate-containing orthodontic composite used as a lingual retainer adhesive. *Angle Orthod.* 2009;79:117-21.
 250. Uysal T, Amasyali M, Ozcan S, Koyuturk AE, Akyol M, Sagdic D. In vivo effects of amorphous calcium phosphate-containing orthodontic composite on enamel demineralization around orthodontic brackets. *Aust Dent J.* 2010;55(3):285-91.
 251. Uysal T, Amasyali M, Koyuturk AE, Ozcan S, Sagdic D. Amorphous calcium phosphate-containing orthodontic composites. Do they prevent demineralisation around orthodontic brackets? *Aust Orthod J.* 2010;26:10-5.
 252. Bröchner A, Christensen C, Kristensen B, Tranæus S, Karlsson L, Sonnesen L, et al. Treatment of post-orthodontic white spot lesions with casein phosphopeptide-stabilised amorphous calcium phosphate. *Clin Oral Invest.* 2011;15(3):369-73.
 253. Antonucci JM, Skrtic D. Fine-tuning of polymeric resins and their interfaces with amorphous calcium phosphate. A strategy for designing effective remineralizing dental composites. *Polymers.* 2010;2(4):378-92.
 254. Beerens MW, van der Veen MH, van Beek H, Ten Cate JM. Effects of casein phosphopeptide amorphous calcium fluoride phosphate paste on white spot lesions and dental plaque after orthodontic treatment: a 3-month follow-up. *Eur J Oral Sci.* 2010;118(6):610-7.
 255. Zhao J1, Liu Y, Sun WB, Zhang H. Amorphous calcium phosphate and its application in dentistry. *Chem Cent J.* 2011;5:40.
 256. Gupta R1, Prakash V. CPP-ACP complex as a new adjunctive agent for remineralisation: a review. *Oral Health Prev Dent.* 2011;9(2):151-65.
 257. Zhang Q, Zou J, Yang R, Zhou X. Remineralization effects of casein phosphopeptide-amorphous calcium phosphate crème on artificial early enamel lesions of primary teeth. *Int J Paediatr Dent.* 2011;21(5):374-81.

258. Moreau JL, Sun L, Chow LC, Xu HH. Mechanical and acid neutralizing properties and bacteria inhibition of amorphous calcium phosphate dental nanocomposite. *J Biomed Mater Res B Appl Biomater*. 2011;98:80-8.
259. Fletcher J, Walsh D, Fowler CE, Mann S. Electrospun mats of PVP/ACP nanofibres for remineralization of enamel tooth surfaces. *CrystEngComm*. 2011;13(11):3692-7.
260. Uysal T, Baysal A, Uysal B, Aydinbelge M, Al-Qunaian T. Do fluoride and casein phosphopeptide-amorphous calcium phosphate affect shear bond strength of orthodontic brackets bonded to a demineralized enamel surface? *Angle Orthod*. 2011;81(3):490-5.
261. Tabrizi A, Cakirer B. A comparative evaluation of casein phosphopeptide-amorphous calcium phosphate and fluoride on the shear bond strength of orthodontic brackets. *Eur J Orthod*. 2011;33(3):282-7.
262. Hamba H, Nikaido T, Inoue G, Sadr A, Tagami J. Effects of CPP-ACP with sodium fluoride on inhibition of bovine enamel demineralization: a quantitative assessment using micro-computed tomography. *J Dent*. 2011;39(6):405-13.
263. Skrtic D, Antonucci JM. Bioactive polymeric composites for tooth mineral regeneration: physicochemical and cellular aspects. *J Funct Biomater*. 2011;2(3):271-307.
264. Chow CK, Wu CD, Evans CA. In vitro properties of orthodontic adhesives with fluoride or amorphous calcium phosphate. *Int J Dent*. 2011;2011:583521.
265. Hegde M, Moany A. Remineralization of enamel subsurface lesions with casein phosphopeptide-amorphous calcium phosphate: a quantitative energy dispersive X-ray analysis using scanning electron microscopy: an in vitro study. *J Conserv Dent*. 2012;15:61-7.
266. Bar-Hillel R, Feuerstein O, Tickotsky N, Shapira J, Moskovitz M. Effects of amorphous calcium phosphate stabilized by casein phosphopeptides on enamel de- and remineralization in primary teeth: an in vitro study. *J Dent Child (Chic)*. 2012;79:9-14.
267. Çehreli SB, Sar C, Polat-Özsoy O, Ünver B, Özsoy S. Effects of a fluoride-containing casein phosphopeptide-amorphous calcium phosphate complex on the shear bond strength of orthodontic brackets. *Eur J Orthod*. 2012;34(2):193-7.
268. Hammad SM1, El Banna MS, Elsaka SE. Twelve-month bracket failure rate with amorphous calcium phosphate bonding system. *Eur J Orthod*. 2013;35(5):622-7.
269. Park SY, Cha JY, Kim KN, Hwang CJ. The effect of casein phosphopeptide amorphous calcium phosphate on the in vitro shear bond strength of orthodontic brackets. *Korean J Orthod*. 2013;43:23-8.
270. Gurunathan D, Somasundaram S. Prevention of white spot lesion in orthodontic patients using casein phosphopeptide-stabilized amorphous calcium phosphate - a systematic review. *Int J Pharma Bio Sci*. 2015;6(2):B702-6.
271. Baysal A, Uysal T. Do enamel microabrasion and casein phosphopeptide-amorphous calcium phosphate affect shear bond strength of orthodontic brackets bonded to a demineralized enamel surface? *Angle Orthod*. 2012;82:36-41.
272. Liu Y, Zhang L, Niu LN, Yu T, Xu HH, Weir MD, et al. Antibacterial and remineralizing orthodontic adhesive containing quaternary ammonium resin monomer and amorphous calcium phosphate nanoparticles. *J Dent*. 2018;72:53-63.
273. Prabhakar AR, Sharma D, Sugandhan S. Comparative evaluation of the remineralising effects and surface microhardness of glass ionomer cement containing grape seed extract and casein phosphopeptide - amorphous calcium phosphate: an in vitro study. *Eur Arch Paediatr Dent*. 2012;13(3):138-43.
274. Weir MD, Chow LC, Xu HH. Remineralization of demineralized enamel via calcium phosphate nanocomposite. *J Dent Res*. 2012;91(10):979-84.
275. Zhao J, Liu Y, Sun WB, Yang X. First detection, characterization, and application of amorphous calcium phosphate in dentistry. *J Dent Sci*. 2012;7(4):316-23.
276. Kato N, Yamamoto E, Isai A, Nishikawa H, Kusunoki M, Yoshikawa K, et al. Ultrathin amorphous calcium phosphate freestanding sheet for dentin tubule sealing. *Bioceram Dev Appl*. 2013;S1:007.
277. Kato N, Isai A, Yamamoto E, Nishikawa H, Kusunoki M, Yoshikawa K, et al. Evaluation of dentin tubule sealing rate improved by attaching ultrathin amorphous calcium phosphate sheet. *Key Eng Mater*. 2015;631:258-61.
278. Reema SD, Lahiri PK, Roy SS. Review of casein phosphopeptides-amorphous calcium phosphate. *Chin J Dent Res*. 2014;17(1):7-14.
279. Cross KJ, Huq NL, Reynolds EC. Casein phosphopeptide-amorphous calcium phosphate nanocomplexes: a structural model. *Biochemistry*. 2016;55(31):4316-25.
280. Schemehorn BR, Orban JC, Wood GD, Fischer GM, Winston AE. Remineralization by fluoride enhanced with calcium and phosphate ingredients. *J Clin Dent*. 1999;10(1 Spec No):13-6.
281. Mayne RJ, Cochrane NJ, Cai F, Woods MG, Reynolds EC. In-vitro study of the effect of casein phosphopeptide amorphous calcium fluoride phosphate on iatrogenic damage to enamel during orthodontic adhesive removal. *Am J Orthod Dentofacial Orthop*. 2011;139(6):e543-51.
282. Llana C, Forner L, Baca P. Anticariogenicity of casein phosphopeptide-amorphous calcium phosphate: a review of the literature. *J Contemp Dent Pract*. 2009;10(3):1-9.
283. Cai F, Shen P, Morgan MV, Reynolds EC. Remineralization of enamel subsurface lesions in situ by sugar-free lozenges containing casein phosphopeptide-amorphous calcium phosphate. *Aust Dent J*. 2003;48(4):240-3.
284. Langhorst SE, O'Donnell JN, Skrtic D. In vitro remineralization of enamel by polymeric amorphous calcium phosphate composite: quantitative microradiographic study. *Dent Mater*. 2009;25(7):884-91.
285. Kumar VL, Itthagarun A, King NM. The effect of casein phosphopeptide-amorphous calcium phosphate on remineralization of artificial caries-like lesions: an in vitro study. *Aust Dent J*. 2008;53:34-40.
286. Ranjitkar S, Rodriguez JM, Kaidonis JA, Richards LC, Townsend GC, Bartlett DW. The effect of casein phosphopeptide-amorphous calcium phosphate on erosive enamel and dentine wear by toothbrush abrasion. *J Dent*. 2009;37(4):250-4.
287. Ranjitkar S, Narayana T, Kaidonis JA, Hughes TE, Richards LC, Townsend GC. The effect of casein phosphopeptide-amorphous calcium phosphate on erosive dentine wear. *Aust Dent J*. 2009;54(2):101-7.
288. Wegehaupt FJ, Attin T. The role of fluoride and casein phosphopeptide/amorphous calcium phosphate in the prevention of erosive/abrasive wear in an in vitro model using hydrochloric acid. *Caries Res*. 2010;44(4):358-63.
289. Al-Mullahi AM, Toumba KJ. Effect of slow-release fluoride devices and casein phosphopeptide/amorphous calcium phosphate nanocomplexes on enamel remineralization in vitro. *Caries Res*. 2010;44(4):364-71.
290. Giniger M, MacDonald J, Spaid M, Felix H. A 180-day clinical investigation of the tooth whitening efficacy of a bleaching gel with added amorphous calcium phosphate. *J Clin Dent*. 2005;16:11-6.
291. Giniger M, MacDonald J, Ziemba S, Felix H. The clinical performance of professionally dispensed bleaching gel with added amorphous calcium phosphate. *J Am Dent Assoc*. 2005;136(3):383-92.
292. Reynolds EC, Cai F, Cochrane NJ, Shen P, Walker GD, Morgan MV, et al. Fluoride and casein phosphopeptide-amorphous calcium phosphate. *J Dent Res*. 2008;87(4):344-8.
293. Ramalingam L, Messer LB, Reynolds EC. Adding casein phosphopeptide-amorphous calcium phosphate to sports drinks to eliminate in vitro erosion. *Pediatr Dent*. 2005;27:61-7.
294. Panich M, Poolthong S. The effect of casein phosphopeptide-amorphous calcium phosphate and a cola soft drink on in vitro enamel hardness. *J Am Dent Assoc*. 2009;140(4):455-60.
295. Silva KG, Pedrini D, Delbem AC, Ferreira L, Cannon M. In situ evaluation of the remineralizing capacity of pit and fissure sealants containing amorphous calcium phosphate and/or fluoride. *Acta Odontol Scand*. 2010;68:11-8.
296. Bayrak S, Tunc ES, Sonmez IS, Egilmez T, Ozmen B. Effects of casein phosphopeptide-amorphous calcium phosphate (CPP-ACP) application on enamel

- microhardness after bleaching. *Am J Dent.* 2009;22(6):393-6.
297. Yengopal V, Mickenautsch S. Caries preventive effect of casein phosphopeptide-amorphous calcium phosphate (CPP-ACP): a meta-analysis. *Acta Odontol Scand.* 2009;67(6):321-32.
 298. Walker G, Cai F, Shen P, Reynolds C, Ward B, Fone C, et al. Increased remineralization of tooth enamel by milk containing added casein phosphopeptide-amorphous calcium phosphate. *J Dairy Res.* 2006;73:74-8.
 299. Walker GD, Cai F, Shen P, Bailey DL, Yuan Y, Cochrane NJ, et al. Consumption of milk with added casein phosphopeptide-amorphous calcium phosphate remineralizes enamel subsurface lesions in situ. *Aust Dent J.* 2009;54(3):245-9.
 300. Willershausen B, Schulz-Dobrick B, Gleissner C. In vitro evaluation of enamel remineralisation by a casein phosphopeptide-amorphous calcium phosphate paste. *Oral Health Prev Dent.* 2009;7:13-21.
 301. Mei HL, Chen LY, Zhang D, Zhang PL, Liu B, Zhao W, et al. Effects of casein phosphopeptide-stabilized amorphous calcium phosphate solution on enamel remineralization. *J Clin Rehabil Tiss Eng Res.* 2009;13(25):4825-8.
 302. Melo MA, Cheng L, Weir MD, Hsia RC, Rodrigues LK, Xu HH. Novel dental adhesive containing nanoparticles and calcium phosphate nanoparticles. *J Biomed Mater Res B Appl Biomater.* 2013;101(4):620-9.
 303. Melo MA, Cheng L, Zhang K, Weir MD, Rodrigues LK, Xu HH. Novel dental adhesives containing nanoparticles of silver and amorphous calcium phosphate. *Dent. Mater.* 2013;29(2):199-210.
 304. Aykut-Yetkiner A, Kara N, Ates M, Ersin N, Ertugrul F. Does casein phosphopeptide amorphous calcium phosphate provide remineralization on white spot lesions and inhibition of *Streptococcus mutans*? *J Clin Pediatr Dent.* 2014;38(4):302-6.
 305. Zhou C, Zhang D, Bai Y, Li S. Casein phosphopeptide-amorphous calcium phosphate remineralization of primary teeth early enamel lesions. *J Dent.* 2014;42:21-9.
 306. Li J, Xie X, Wang Y, Yin W, Antoun JS, Farella M, et al. Long-term remineralizing effect of casein phosphopeptide-amorphous calcium phosphate (CPP-ACP) on early caries lesions in vivo: a systematic review. *J Dent.* 2014;42(7):769-77.
 307. Zhang X, Li Y, Sun X, Kisheene A, Deng X, Yang X, et al. Biomimetic remineralization of demineralized enamel with nano-complexes of phosphorylated chitosan and amorphous calcium phosphate. *J Mater Sci Mater Med.* 2014;25(12):2619-28.
 308. Zhang L, Weir MD, Chow LC, Antonucci JM, Chen J, Xu HH. Novel rechargeable calcium phosphate dental nanocomposite. *Dent Mater.* 2016;32(2):285-93.
 309. Zhang L, Weir MD, Chow LC, Reynolds MA, Xu HH. Rechargeable calcium phosphate orthodontic cement with sustained ion release and re-release. *Sci Rep.* 2016;6:36476.
 310. Xie XJ, Xing D, Wang L, Zhou H, Weir MD, Bai YX, et al. Novel rechargeable calcium phosphate nanoparticle-containing orthodontic cement. *Int J Oral Sci.* 2018;9:24-32.
 311. Liang K, Xiao S, Wu J, Li J, Weir MD, Cheng L, et al. Long-term dentin remineralization by poly(amido amine) and rechargeable calcium phosphate nanocomposite after fluid challenges. *Dent Mater.* 2018;34(4):607-18.
 312. Zhang K, Cheng L, Weir MD, Bai YX, Xu HH. Effects of quaternary ammonium chain length on the antibacterial and remineralizing effects of a calcium phosphate nanocomposite. *Int J Oral Sci.* 2016;8:45-53.
 313. Skrtic D, Antonucci JM. Polymeric dental composites based on remineralizing amorphous calcium phosphate fillers. *Curr Trends Polym Sci.* 2016;17:1-31.
 314. Mendes AC, Restrepo M, Bussanelli D, Zuanon AC. Use of casein amorphous calcium phosphate (CPP-ACP) on white-spot lesions: randomised clinical trial. *Oral Health Prev Dent.* 2018;16:27-31.
 315. Shyam R, Manjunath BC, Kumar A, Narang R, Ghanghas M, Rani G. Role of casein phosphopeptide?amorphous calcium phosphate (CPP?ACP) in prevention of dental caries: a review. *Int J Adv Res.* 2017;5(7):999-1004.
 316. Pepelassi EM, Bissada NF, Greenwell H, Farah CF. Doxycycline-tricalcium phosphate composite graft facilitates osseous healing in advanced periodontal furcation defects. *J Periodontol.* 1991;62(2):106-15.
 317. Wiltfang J, Schlegel KA, Schultze-Mosgau S, Nkenke E, Zimmermann R, Kessler P. Sinus floor augmentation with β -tricalciumphosphate (β -TCP): does platelet-rich plasma promote its osseous integration and degradation? *Clin Oral Implant Res.* 2003;14(2):213-8.
 318. Zerbo IR, Zijdeveld SA, de Boer A, Bronckers AL, de Lange G, ten Bruggenkate CM, et al. Histomorphometry of human sinus floor augmentation using a porous β -tricalcium phosphate: a prospective study. *Clin Oral Implant Res.* 2004;15(6):724-32.
 319. Zijdeveld SA, Zerbo IR, van den Bergh JP, Schulten EA, ten Bruggenkate CM. Maxillary sinus floor augmentation using a β -tricalcium phosphate (Cerasorb*) alone compared to autogenous bone grafts. *Int J Oral Maxillofac Implants.* 2005;20(3):432-40.
 320. Shayesteh YS, Khojasteh A, Soleimani M, Alikhasi M, Khoshzaban A, Ahmadbeigi N. Sinus augmentation using human mesenchymal stem cells loaded into a β -tricalcium phosphate/hydroxyapatite scaffold. *Oral Surg Oral Med Oral Pathol Oral Radiol Endod.* 2008;106(2):203-9.
 321. Marukawa K1, Ueki K, Okabe K, Nakagawa K, Yamamoto E. Use of self-setting β -tricalcium phosphate for maxillary sinus augmentation in rabbit. *Clin Oral Implants Res.* 2011;22(6):606-12.
 322. Klijn RJ, Hoekstra JW, van den Beucken JJ, Meijer GJ, Jansen JA. Maxillary sinus augmentation with microstructured tricalcium phosphate ceramic in sheep. *Clin Oral Implant Res.* 2012;23(3):274-80.
 323. Yoshino K, Taniguchi Y, Yoda Y, Matsukubo T. Autotransplantation of tooth by osteotome sinus floor elevation technique with beta-tricalcium phosphate (β -TCP). *J Oral Maxil Surg Med Pathol.* 2013;25(4):351-4.
 324. Fischer-Brandies E, Dieltz E. Clinical use of tricalciumphosphate and hydroxyapatite in maxillofacial surgery. *J Oral Implantol.* 1985;12:40-4.
 325. Ignatius AA, Ohnmacht M, Claes LE, Kreidler J, Palm F. A composite polymer/tricalcium phosphate membrane for guided bone regeneration in maxillofacial surgery. *J Biomed Mater Res.* 2001;58(5):564-9.
 326. Horch HH, Sader R, Pautke C, Neff A, Deppe H, Kolk A. Synthetic, pure-phase beta-tricalcium phosphate ceramic granules (Cerasorb*) for bone regeneration in the reconstructive surgery of the jaws. *Int J Oral Maxillofac Surg.* 2006;35(8):708-13.
 327. Saito E, Saito A, Kuboki Y, Kimura M, Honma Y, Takahashi T, et al. Periodontal repair following implantation of beta-tricalcium phosphate with different pore structures in class III furcation defects in dogs. *Dent Mater J.* 2012;31(4):681-8.
 328. Bilginer S, Esener T, S  ylemezo  yl   F, Tiftik AM. The investigation of biocompatibility and apical microleakage of tricalcium phosphate based root canal sealers. *J Endod.* 1997;23(2):105-9.
 329. Dou W, Mastrogiacomo S, Veltien A, Alghamdi HS, Walboomers XF, et al. Visualization of calcium phosphate cement in teeth by zero echo time 1 H MRI at high field. *NMR Biomed.* 2018;31(2).
 330. Niwa K, Ogawa K, Miyazawa K, Aoki T, Kawai T, Goto S. Application of a-tricalcium phosphate coatings on titanium subperiosteal orthodontic implants reduces the time for absolute anchorage: a study using rabbit femora. *Dent Mater J.* 2009;28(4):477-86.
 331. Yamamoto E, Kato N, Isai A, Nishikawa H, Hashimoto Y, Yoshikawa K, et al. A novel treatment for dentine cavities with intraoral laser ablation method using an Er:YAG laser. *Key Eng Mater.* 2015;631:262-6.
 332. Karlinsey RL, Mackey AC, Walker ER, Frederick KE. Surfactant-modified β -TCP: structure, properties, and in vitro remineralization of subsurface enamel lesions. *J Mater Sci Mater Med.* 2010;21(7):2009-20.
 333. Karlinsey RL, Mackey AC, Walker ER, Frederick KE. Preparation,

- characterization and in vitro efficacy of an acid-modified β -TCP material for dental hard-tissue remineralization. *Acta Biomater.* 2010;6(3):969-78.
334. Karlinsey RL, Pfarrer AM. Fluoride plus functionalized β -TCP: a promising combination for robust remineralization. *Adv Dent Res.* 2012;24(2):48-52.
 335. Shayegan A, Petein M, Abbelee AV. Beta-tricalcium phosphate, white mineral trioxide aggregate, white Portland cement, ferric sulfate, and formocresol used as pulpotomy agents in primary pig teeth. *Oral Surg Oral Med Oral Pathol Oral Radiol Endod.* 2008;105:536-42.
 336. Heller AI, Koenigs JF, Brilliant JD, Melfi RC, Driskell TD. Direct pulp capping of permanent teeth in primates using a resorbable form of tricalcium phosphate ceramic. *J Endod.* 1975;1(3):95-101.
 337. Koenigs JF, Heller AL, Brilliant JD, Melfi RC, Driskell TD. Induced apical closure of permanent teeth in adult primates using a resorbable form of tricalcium phosphate ceramic. *J Endod.* 1975;1(3):102-6.
 338. Boone ME, Kafrawy AH. Pulp reaction to a tricalcium phosphate ceramic capping agent. *Oral Surg Oral Med Oral Pathol.* 1979;47(4):369-71.
 339. Himel V, Brady J, Weir J. Evaluation of repair of mechanical perforations of the pulp chamber floor using biodegradable tricalcium phosphate or calcium hydroxide. *J Endod.* 1985;11(4):161-5.
 340. Yoshida K, Yoshida N, Iwaku M. Histological observations of hard tissue barrier formation in amputated dental pulp capped with alpha-tricalcium phosphate containing calcium hydroxide. *Endod Dent Traumatol.* 1994;10(3):113-20.
 341. Higashi T. Influence of particle size of calcium phosphate ceramics as a capping agent on the formation of a hard tissue barrier in amputated dental pulp. *J Endod.* 1996;22(6):281-3.
 342. Sinai IH, Romea DJ, Glassman G, Morse DR, Fantasia J, Furst ML. An evaluation of tricalcium phosphate as a treatment for endodontic perforations. *J Endod.* 1989;15(9):399-403.
 343. Balla R, LoMonaco CJ, Skribner J, Lin LM. Histological study of furcation perforations treated with tricalcium phosphate, hydroxylapatite, amalgam, and life. *J Endod.* 1991;17(5):234-8.
 344. Harbert H. Generic tricalcium phosphate plugs: an adjunct in endodontics. *J Endod.* 1991;17(3):131-4.
 345. Gaberthüel TW, Strub JR. Treatment of periodontal pockets with tricalcium phosphate in man. A preliminary report. *SSO Schweiz Monatsschr Zahnheilkd.* 1977;87(8):809-14.
 346. Strub JR, Gaberthüel TW. [Tricalcium phosphate and its biodegradable ceramics in periodontal bone surgery. A review of the literature]. *SSO Schweiz Monatsschr Zahnheilkd.* 1978;88(7):798-803.
 347. Baldock WT, Hutchens LH, McFall WT, Simpson DM. An evaluation of tricalcium phosphate implants in human periodontal osseous defects of two patients. *J Periodontol.* 1985;56:1-7.
 348. Saffar JL, Colombier ML, Detienville R. Bone formation in tricalcium phosphate-filled periodontal intrabony lesions. Histological observations in humans. *J Periodontol.* 1990;61(4):209-16.
 349. Stavropoulos A, Windisch P, Szendrői-Kiss D, Peter R, Gera I, Sculean A. Clinical and histologic evaluation of granular beta-tricalcium phosphate for the treatment of human intrabony periodontal defects: a report on five cases. *J Periodontol.* 2010;81(2):325-34.
 350. Asvanund P, Chunhabundit P. Alveolar bone regeneration by implantation of nacre and B-tricalcium phosphate in guinea pig. *Implant Dent.* 2012;21(3):248-53.
 351. Okubo N, Fujita T, Ishii Y, Ota M, Shibukawa Y, Yamada S. Coverage of gingival recession defects using acellular dermal matrix allograft with or without beta-tricalcium phosphate. *J Biomater Appl.* 2013;27(5):627-37.
 352. Saito A, Saito E, Ueda Y, Shibukawa Y, Honma Y, Takahashi T, et al. Effect of tunnel structure of β -TCP on periodontal repair in class III furcation defects in dogs. *Bioceram Dev Appl.* 2014;4:073.
 353. Matsuura T, Akizuki T, Hoshi S, Ikawa T, Kinoshita A, Sunaga M, et al. Effect of a tunnel-structured β -tricalcium phosphate graft material on periodontal regeneration: a pilot study in a canine one-wall intrabony defect model. *J Periodont Res.* 2015;50(3):347-55.
 354. Matsuse K, Hashimoto Y, Kakinoki S, Yamaoka T, Morita S. Periodontal regeneration induced by porous alpha-tricalcium phosphate with immobilized basic fibroblast growth factor in a canine model of 2-wall periodontal defects. *Med Mol Morphol.* 2018;51:48-56.
 355. Mellgren T, Qin T, Öhman-Mägi C, Zhang Y, Wu B, Xia W, et al. Calcium phosphate microspheres as a delivery vehicle for tooth-bleaching agents. *J Dent Res.* 2018;97(3):283-8.
 356. Rezvani M, Atai M, Rouhollahi H, Malekhoseini K, Rezai H, Hamze F. Effect of nano-tricalcium phosphate and nanohydroxyapatite on staining susceptibility of bleached enamel. *Int Sch Res Notices.* 2015;2015:935264.
 357. Ogawa K, Miyaji H, Kato A, Kosen Y, Momose T, Yoshida T, Nishida, et al. Periodontal tissue engineering by nano beta-tricalcium phosphate scaffold and fibroblast growth factor-2 in one-wall infrabony defects of dogs. *J Periodont Res.* 2016;51(6):758-67.
 358. Călin C, Pătrascu I. Growth factors and beta-tricalcium phosphate in the treatment of periodontal intraosseous defects: a systematic review and meta-analysis of randomised controlled trials. *Arch Oral Biol.* 2016;66:44-54.
 359. Maksimovskii IM, Zemskova MI. [The use of a calcium phosphate ceramic in treating deep caries.] *Stomatologiya.* 1994;73(2):14-7.
 360. Wang Y, Wang QS. Application of nano-hydroxyapatite and its composite biomaterials in stomatology. *J Clin Rehabil Tiss Eng Res.* 2010;14:1426-8.
 361. Besinis A, van Noort R, Martin N. Infiltration of demineralized dentin with silica and hydroxyapatite nanoparticles. *Dent. Mater.* 2012;28(9):1012-23.
 362. Chen H, Clarkson BH, Sun K, Mansfield JF. Self-assembly of synthetic hydroxyapatite nanorods into an enamel prism-like structure. *J Colloid Interf Sci.* 2005;288:97-103.
 363. Onuma K, Yamagishi K, Oyane A. Nucleation and growth of hydroxyapatite nanocrystals for nondestructive repair of early caries lesions. *J Cryst Growth.* 2005;282(1-2):199-207.
 364. Meng X, Lv K, Zhang J, Qu D. Caries inhibitory activity of the nano-HA in vitro. *Key Eng Mater.* 2007;330-332:251-4.
 365. Li BG, Wang JP, Zhao ZY, Sui YF, Zhang YX. Mineralizing of nano-hydroxyapatite powders on artificial caries. *Rare Metal Mat Eng.* 2007;36:128-30.
 366. Li L, Pan HH, Tao JH, Xu XR, Mao CY, Gu XH, et al. Repair of enamel by using hydroxyapatite nanoparticles as the building blocks. *J Mater Chem.* 2008;18(34):4079-84.
 367. Lim KT, Suh JD, Kim J, Choung PH, Chung JH. Calcium phosphate bioceramics fabricated from extracted human teeth for tooth tissue engineering. *J Biomed Mater Res B Appl Biomater.* 2011;99(2):399-411.
 368. Block MS, Kent JN, Kay JF. Evaluation of hydroxylapatite-coated titanium dental implants in dogs. *J Oral Maxillofac Surg.* 1987;45(7):601-7.
 369. Block MS, Kent JN, Beirne OR. Long-term follow-up on hydroxylapatite-coated cylindrical dental implants: a comparison between developmental and recent periods. *J Oral Maxillofac Surg.* 1994;52(9):937-44.
 370. Jones JD, Saigusa M, van Sickels JE, Tiner BD, Gardner WA. Clinical evaluation of hydroxyapatite-coated titanium plasma-sprayed and titanium plasma-sprayed cylinder dental implants. *Oral Surg Oral Med Oral Pathol Oral Radiol Endod.* 1997;84(2):137-41.
 371. Gineste L, Gineste M, Ranz X, Ellefterion A, Guilhem A, Rouquet N, et al. Degradation of hydroxylapatite, fluorapatite, and fluorhydroxyapatite coatings of dental implants in dogs. *J Biomed Mater Res.* 1999;48(3):224-34.
 372. Ong JL, Chan DC. Hydroxyapatite and their use as coatings in dental implants: a review. *Crit Rev Biomed Eng.* 2000;28(5-6):667-707.

373. Jones JD, Lupori J, van Sickels JE, Gardner W. A 5-year comparison of hydroxyapatite-coated titanium plasma-sprayed and titanium plasma-sprayed cylinder dental implants. *Oral Surg Oral Med Oral Pathol Oral Radiol Endod.* 1999;87(6):649-52.
374. Block MS, Gardiner D, Almerico B, Neal C. Loaded hydroxylapatite-coated implants and uncoated titanium-threaded implants in distracted dog alveolar ridges. *Oral Surg Oral Med Oral Pathol Oral Radiol Endod.* 2000;89(6):676-85.
375. Yoshinari M, Oda Y, Inoue T, Matsuzaka K, Shimono M. Bone response to calcium phosphate-coated and bisphosphonate-immobilized titanium implants. *Biomaterials.* 2002;23(14):2879-85.
376. Schliephake H, Scharnweber D, Roessler S, Dard M, Sewing A, Aref A. Biomimetic calcium phosphate composite coating of dental implants. *Int J Oral Maxillofac Implants.* 2006;21(5):738-46.
377. Kim SG, Hahn BD, Park DS, Lee YC, Choi EJ, Chae WS, et al. Aerosol deposition of hydroxyapatite and 4-hexylresorcinol coatings on titanium alloys for dental implants. *J Oral Maxillofac Surg.* 2011;69(11):e354-63.
378. Jung UW, Hwang JW, Choi DY, Hu KS, Kwon MK, Choi SH, et al. Surface characteristics of a novel hydroxyapatite-coated dental implant. *J Periodontol.* 2012;42(2):59-63.
379. Kano T, Yamamoto R, Miyashita A, Komatsu K, Hayakawa T, Sato M, et al. Regeneration of periodontal ligament for apatite-coated tooth-shaped titanium implants with and without occlusion using rat molar model. *J Hard Tiss Biol.* 2012;21(2):189-202.
380. van Oirschot BA, Bronkhorst EM, van den Beucken JJ, Meijer GJ, Jansen JA, Junker R. A systematic review on the long-term success of calcium phosphate plasma-spray-coated dental implants. *Odontology.* 2016;104(3):347-56.
381. Yu JM, Choe HC. Mg-containing hydroxyapatite coatings on Ti-6Al-4V alloy for dental materials. *Appl Surf Sci.* 2018;432B:294-9.
382. Tinsley D, Watson CJ, Russell JL. A comparison of hydroxylapatite coated implant retained fixed and removable mandibular prostheses over 4 to 6 years. *Clin Oral Implant Res.* 2001;12(2):159-66.
383. Binahmed A, Stoykewych A, Hussain A, Love B, Pruthi V. Long-term follow-up of hydroxyapatite-coated dental implants - a clinical trial. *Int J Oral Maxillofac Implants.* 2007;22(6):963-8.
384. Iezzi G, Scarano A, Petrone G, Piattelli A. Two human hydroxyapatite-coated dental implants retrieved after a 14-year loading period: a histologic and histomorphometric case report. *J Periodontol.* 2007;78(5):940-7.
385. Owadally ID, Pitt Ford TR. Effect of addition of hydroxyapatite on the physical properties of IRM. *Int Endod J.* 1994;27(5):227-32.
386. Owadally ID, Chong BS, Pitt Ford TR, Wilson RF. Biological properties of IRM with the addition of hydroxyapatite as a retrograde root filling material. *Endod Dent Traumatol.* 1994;10(5):228-32.
387. Nicholson JW, Hawkins SJ, Smith JE. The incorporation of hydroxyapatite into glass-polyalkenoate ("glass-ionomer") cements: a preliminary study. *J Mater Sci Mater Med.* 1993;4(4):418-21.
388. Yap AU, Pek YS, Kumar RA, Cheang P, Khor KA. Experimental studies on a new bioactive material: HA/Ionomer cements. *Biomaterials.* 2002;23(3):955-62.
389. Lucas ME, Arita K, Nishino M. Toughness, bonding and fluoride release properties of hydroxyapatite-added glass ionomer cement. *Biomaterials.* 2003;24(21):3787-94.
390. Moshaverinia A, Ansari S, Moshaverinia M, Roohpour N, Darr JA, Rehman I. Effects of incorporation of hydroxyapatite and fluoroapatite nanobioceramics into conventional glass ionomer cements (GIC). *Acta Biomater.* 2008;4(2):432-40.
391. Moshaverinia A, Ansari S, Movasaghi Z, Billington RW, Darr JA, Rehman IU. Modification of conventional glass-ionomer cements with N-vinylpyrrolidone containing polyacids, nano-hydroxy and fluoroapatite to improve mechanical properties. *Dent Mater.* 2008;24(10):1381-90.
392. Arita K, Yamamoto A, Shinonaga Y, Harada K, Abe Y, Nakagawa K, et al. Hydroxyapatite particle characteristics influence the enhancement of the mechanical and chemical properties of conventional restorative glass ionomer cement. *Dent Mater J.* 2011;30(5):672-83.
393. Lin J, Zhu J, Gu X, Wen W, Li Q, Fischer-Brandies H, et al. Effects of incorporation of nano-fluorapatite or nano-fluorohydroxyapatite on a resin-modified glass ionomer cement. *Acta Biomater.* 2011;7(3):1346-53.
394. Neto DM, Carvalho EV, Rodrigues EA, Feitosa VP, Sauro S, Mele G, et al. Novel hydroxyapatite nanorods improve anti-caries efficacy of enamel infiltrants. *Dent Mater.* 2016;32(6):784-93.
395. Domingo C, Arcis RW, López-Macipe A, Osorio R, Rodríguez-Clemente R, Murtra J, et al. Dental composites reinforced with hydroxyapatite: mechanical behavior and absorption/elution characteristics. *J Biomed Mater Res.* 2001;56(2):297-305.
396. Brostow W, Estevez M, Lobland HE, Hoang L, Rodriguez JR, Vargar S. Porous hydroxyapatite-based obturation materials for dentistry. *J Mater Res.* 2008;23(6):1587-96.
397. Oduncu BS, Yucel S, Aydin I, Sener ID, Yamaner G. Polymerisation shrinkage of light-cured hydroxyapatite (HA) - reinforced dental composites. *World Acad Sci Eng Technol.* 2010;40:286-91.
398. Huang S, Gao S, Cheng L, Yu H. Combined effects of nano-hydroxyapatite and Galla chinensis on remineralisation of initial enamel lesion in vitro. *J Dent.* 2010;38(10):811-9.
399. Zhang Y, Wang Y. Hydroxyapatite effect on photopolymerization of self-etching adhesives with different aggressiveness. *J Dent.* 2012;40(7):564-70.
400. Vargas S, Estevez M, Hernandez A, Laiz JC, Brostow W, Lobland HE, et al. Hydroxyapatite based hybrid dental materials with controlled porosity and improved tribological and mechanical properties. *Mater Res Innov.* 2013;17:154-60.
401. Schlafer S, Birkedal H, Olsen J, Skovgaard J, Sutherland DS, Wejse PL, et al. Calcium-phosphate-osteopontin particles for caries control. *Biofouling.* 2016;32(4):349-57.
402. Ai M, Du Z, Zhu S, Geng H, Zhang X, Cai Q, et al. Composite resin reinforced with silver nanoparticles-laden hydroxyapatite nanowires for dental application. *Dent Mater.* 2017;33:12-22.
403. Makvandi P, Corcione CE, Paladini F, Gallo AL, Montagna F, Jamaledin R, et al. Antimicrobial modified hydroxyapatite composite dental bite by stereolithography. *Polym Adv Technol.* 2018;29:364-71.
404. Markovic D, Petrovic V, Krstic N, Lazarevic-Macanovic M, Nikolic Z. Radiological assessment of apex formation following use of hydroxyapatite. *Acta Veter.* 2007;57(2-3):275-87.
405. Krell KV, Wefel JS. A calcium phosphate cement root canal sealer - scanning electron microscopic analysis. *J Endod.* 1984;10(12):571-6.
406. Krell KV, Madison S. Comparison of apical leakage in teeth obturated with a calcium phosphate cement or Grossman's cement using lateral condensation. *J Endod.* 1985;11(8):336-9.
407. Chohayeb AA, Chow LC, Tsaknis PJ. Evaluation of calcium phosphate as a root canal sealer-filler material. *J Endod.* 1987;13(8):384-7.
408. Sugawara A, Chow LC, Takagi S, Chohayeb H. In vitro evaluation of the sealing ability of a calcium phosphate cement when used as a root canal sealer-filler. *J Endod.* 1990;16(4):162-5.
409. Chaung HM, Hong CH, Chiang CP, Lin SK, Kuo YS, Lan WH, et al. Comparison of calcium phosphate cement mixture and pure calcium hydroxide as direct pulp-capping agents. *J Formos Med Assoc.* 1996;95(7):545-50.
410. Dupoirieux L, Gard C. Hydroxyapatite cement for calvarial reconstruction. *Oral Surg Oral Med Oral Pathol Oral Radiol Endod.* 2000;89(2):140-2.
411. Cherg AM, Chow LC, Takagi S. In vitro evaluation of a calcium phosphate cement root canal filler/sealer. *J Endod.* 2001;27(10):613-5.
412. Sugawara A, Fujikawa K, Kusama K, Nishiyama M, Murai S, Takagi S,

- et al. Histopathologic reaction of calcium phosphate cement for alveolar ridge augmentation. *J Biomed Mater Res*. 2002;61:47-52.
413. Fujikawa K, Sugawara A, Kusama K, Nishiyama M, Murai S, Takagi S, et al. Fluorescent labeling analysis and electron probe microanalysis for alveolar ridge augmentation using calcium phosphate cement. *Dent Mater J*. 2002;21(4):296-305.
 414. Comuzzi L, Ooms E, Jansen JA. Injectable calcium phosphate cement as a filler for bone defects around oral implants, an experimental study in goats. *Clin Oral Implants Res*. 2002;13(3):304-11.
 415. Shirakata Y, Oda S, Kinoshita A, Kikuchi S, Tsuchioka H, Ishikawa I. Histocompatible healing of periodontal defects after application of injectable calcium phosphate bone cement. A preliminary study in dogs. *J Periodontol*. 2002;73(9):1043-53.
 416. Kim JS1, Baek SH, Bae KS. In vivo study on the biocompatibility of newly developed calcium phosphate-based root canal sealers. *J Endod*. 2004;30(10):708-11.
 417. Noetzel J, Özer K, Reissauer BH, Anil A, Rössler R, Neumann K, et al. Tissue responses to an experimental calcium phosphate cement and mineral trioxide aggregate as materials for furcation perforation repair, a histological study in dogs. *Clin Oral Invest*. 2006;10:77-83.
 418. Witjaksono W, Naing L, Mulyawati E, Samsudin AR, Oo MM. Sealing ability of hydroxyapatite as a root canal sealer: in vitro study. *Dent J*. 2007;40(3):101-5.
 419. Ascherman JA, Foo R, Nanda D, Parisien M. Reconstruction of cranial bone defects using a quick-setting hydroxyapatite cement and absorbable plates. *J Craniofac Surg*. 2008;19(4):1131-5.
 420. Lee SK, Lee SK, Lee SI, Park JH, Jang JH, Kim HW, et al. Effect of calcium phosphate cements on growth and odontoblastic differentiation in human dental pulp cells. *J Endod*. 2010;36(9):1537-42.
 421. Arisan V, Anil A, Wolke JG, Özer K. The effect of injectable calcium phosphate cement on bone anchorage of titanium implants: an experimental feasibility study in dogs. *Int J Oral Maxillofac Surg*. 2010;39(5):463-8.
 422. Barros CM, de Oliveira SV, Marques JB, Viana KM, Costa AC. Analysis of the hydroxyapatite incorporate MTA dental application. *Mater Sci Forum*. 2012;727-728:1381-6.
 423. Xiao Y, Yin Q, Wang L, Bao C. Macro-porous calcium phosphate scaffold with collagen and growth factors for periodontal bone regeneration in dogs. *Ceram Int*. 2015;41:995-1003.
 424. Hontsu S, Kato N, Yamamoto E, Nishikawa H, Kusunoki M, Hayami T, et al. Regeneration of tooth enamel by flexible hydroxyapatite sheet. *Key Eng Mater*. 2012;493-494:615-9.
 425. Yamamoto E, Kato N, Nishikawa H, Kusunoki M, Hayami T, Yoshikawa K, et al. Adhesive strength between flexible hydroxyapatite sheet and tooth enamel. *Key Eng Mater*. 2013;529-530:522-5.
 426. Yamamoto E, Kato N, Isai A, Nishikawa H, Kusunoki M, Yoshikawa K, et al. Restoration of tooth enamel using a flexible hydroxyapatite sheet coated with tricalcium phosphate. *Bioceram Dev Appl*. 2013;S1:006.
 427. Jaber L, Mascres C, Donohue WB. Electron microscope characteristics of dentin repair after hydroxyapatite direct pulp capping in rats. *J Oral Pathol Med*. 1991;20(10):502-8.
 428. Jaber L, Mascres C, Donohue WB. Reaction of the dental pulp to hydroxyapatite. *Oral Surg Oral Med Oral Pathol*. 1992;73:92-8.
 429. Li T1, Akao M, Takagi M. Tissue reaction of hydroxyapatite sol to rat molar pulp. *J Mater Sci Mater Med*. 1998;9(11):631-42.
 430. Hayashi Y, Imai M, Yanagiguchi K, Vilorio IL, Ikeda T. Hydroxyapatite applied as direct pulp capping medicine substitutes for osteodentin. *J Endod*. 1999;25(4):225-9.
 431. Zhang W, Walboomers XF, Jansen JA. The formation of tertiary dentin after pulp capping with a calcium phosphate cement, loaded with PLGA microparticles containing TGF-β1. *J Biomed Mater Res A*. 2008;85(2):439-44.
 432. Nakagawa KI. [Clinico-pathological studies of dental biomaterials in endodontic therapy, with special reference to the biocompatibility of the hydroxyapatite on exposed vital human pulp]. *Shikwa Gakuho*. 1983;83(5):501-27.
 433. Maeda Y, Okada M, Okuno Y, Soga K, Yamamoto H, Okazaki M. Clinical application of implant stabilizers: combined use of single-crystal sapphire endodontic implants with hydroxyapatite particles. *J Osaka Univ Dent Sch*. 1984;24:131-44.
 434. Roane JB, Benenati FW. Successful management of a perforated mandibular molar using amalgam and hydroxyapatite. *J Endod*. 1987;13:400-4.
 435. Yamaguchi K. Biological evaluation of new hydroxyapatite endodontic cement in vivo. Histopathological and clinico-pathological observation. *Dent Sci Reports*. 1989;89(4):761-92.
 436. Tomizuka K. Experimental study on apatite ceramics used as endodontic endosseous implant. *Kokubyo Gakkai Zasshi*. 1990;57:201-26.
 437. White JM1, Goodis H. In vitro evaluation of an hydroxyapatite root canal system filling material. *J Endod*. 1991;17(11):561-6.
 438. MacDonald A, Moore BK, Newton CW, Brown CE Jr. Evaluation of an apatite cement as a root end filling material. *J Endod*. 1994;20(12):598-604.
 439. Gambarini G, Tagger M. Sealing ability of a new hydroxyapatite-containing endodontic sealer using lateral condensation and thermatic compaction of gutta-percha, in vitro. *J Endod*. 1996;22(4):165-7.
 440. Mangin C, Yesilsoy C, Nissan R, Stevens R. The comparative sealing ability of hydroxyapatite cement, mineral trioxide aggregate, and super ethoxybenzoic acid as root-end filling materials. *J Endod*. 2003;29(4):261-4.
 441. Yu L, Xu B, Wu B. Treatment of combined endodontic-periodontic lesions by intentional replantation and application of hydroxyapatites. *Dent Traumatol*. 2003;19:60-3.
 442. Markovic D, Živojinovic V, Kokovic V, Jokanovic V. Hydroxyapatite as a root canal system filling material: cytotoxicity testing. *Mater Sci Forum*. 2004;453-454:555-60.
 443. Teodorovic N, Martinovic Ž. Significance of crown-down root canal preparation technique in endodontic therapy by using the hydroxylapatite sealer. *Vojnosanit Pregl*. 2005;62(6):447-52.
 444. Fathi MH, Salehi M, Mortazavi V, Mousavi SB, Parsapour A. Novel hydroxyapatite/niobium surface coating for endodontic dental implant. *Surf Eng*. 2006;22(5):353-8.
 445. Masudi SM, Luddin N, Mohamad D, Alkashakhshir JJ, Adnan R, Ramli RA. In vitro study on apical sealing ability of nano-hydroxyapatite-filled epoxy resin based endodontic sealer. *AIP Conf Proceed*. 2010;1217:467-71.
 446. Vaishnavi C, Mohan B, Narayanan LL. Treatment of endodontically induced periapical lesions using hydroxyapatite, platelet-rich plasma, and a combination of both: an in vivo study. *J Conserv Dent*. 2011;14(2):140-6.
 447. Collares FM1, Leitune VC, Rostirolla FV, Trommer RM, Bergmann CP, Samuel SM. Nanostructured hydroxyapatite as filler for methacrylate-based root canal sealers. *Int Endod J*. 2012;45(1):63-7.
 448. Wang JP, Geogi G. Antimicrobial and sealant properties of nanohydroxyapatite as endodontic sealer. *Chin J Tissue Eng Res*. 2014;18:3350-4.
 449. Alhashimi RA, Mannocci F, Sauro S. Experimental polyethylene-hydroxyapatite carrier-based endodontic system: an in vitro study on dynamic thermomechanical properties, sealing ability, and measurements of micro-computed tomography voids. *Eur J Oral Sci*. 2016;124(3):279-86.
 450. Hara Y, Murakami T, Kajiyama K, Maeda K, Akamine A, Nagamine N, et al. [Application of calcium phosphate ceramics to periodontal therapy. 8. Effects of orthodontic force on repaired bone with hydroxyapatite]. *Nihon Shishubyo Gakkai Kaishi*. 1989;31:224-34.
 451. Müller N. Alveolarfortsätzerhöhung mit Hydroxylapatit. Klinische Erfahrungen aus prothetischer Sicht. [Augmentation of alveolar process with hydroxylapatite. Clinical orthodontic experience]. *Dtsch. Zahnärztl Z*. 1989;44:596-9.

452. Schneider B, Diedrich P. [Interaction between orthodontic tooth movement and hydroxyapatite ceramics]. *Dtsch Zahnärztl Z*. 1989;44(4):282-5.
453. Giordano M, Macchi A, Ostinelli E, Tagliabue A. [Protective effect on enamel of ultra-micronized hydroxyapatite in combination with orthodontic composite cement. In vivo study]. *Minerva Stomatologica*. 1996;45(1-2):29-35.
454. Liang X, Tang SQ, Lu D, Zhao ZH, Chao YL, Wang H. Study on hydroxyapatite-coated titanium implants used as orthodontic anchorage - an experimental investigation of implant stability and peri-implant neck tissue in dogs. *Chinese J Dent Res*. 1998;1(2):57-61.
455. Akhavan A, Sodagar A, Mojtahedzadeh F, Sodagar K. Investigating the effect of incorporating nanosilver/nanohydroxyapatite particles on the shear bond strength of orthodontic adhesives. *Acta Odontol Scand*. 2013;71(5):1038-42.
456. Enan ET, Hammad SM. Microleakage under orthodontic bands cemented with nano-hydroxyapatite-modified glass ionomer: an in vivo study. *Angle Orthodontist* 2013;83(6):981-6.
457. Seifi M, Arayesh A, Shamloo N, Hamed R. Effect of nanocrystalline hydroxyapatite socket preservation on orthodontically induced inflammatory root resorption. *Cell J*. 2015;16(4):514-27.
458. Ajami S, Pakshir HR, Babanouri N. Impact of nanohydroxyapatite on enamel surface roughness and color change after orthodontic debonding. *Prog Orthod*. 2016;17:11.
459. Frame JW, Brady CL, Browne RM. Augmentation of the edentulous mandible using bone and hydroxyapatite: a comparative study in dogs. *Int J Oral Surg*. 1981;10(Suppl 1):88-92.
460. Boyne P. Impact of durapatite as a bone grafting material in oral and maxillofacial surgery. *Compend Contin Educ Dent*. 1982;(Suppl 2):S83-6.
461. Mangano C, Venini E, Venini G. [Dense Apatite Ceramic (DAC) as a bone substitute in oral surgery]. *Dent Cadmos*. 1984;52(9 Suppl):97,100-1,104-5 passim.
462. Cranin AN, Tobin GP, Glebman J. Applications of hydroxylapatite in oral and maxillofacial surgery. Part I: Periodontal and endosteal-implant repairs. *Compendium*. 1987;8(4):254-6,258,261-2.
463. Cranin AN, Tobin GP, Gelbman J. Applications of hydroxylapatite in oral and maxillofacial surgery. Part II: Ridge augmentation and repair of major oral defects. *Compendium (Newtown, Pa.)*. 1987;8:334-5,337.
464. Frame JW, Brady CL. The versatility of hydroxyapatite blocks in maxillofacial surgery. *Br J Oral Maxillofac Surg*. 1987;25(6):452-64.
465. Frame JW. Hydroxyapatite as a biomaterial for alveolar ridge augmentation. *Int J Oral Maxillofac Surg*. 1987;16(6):642-55.
466. Asanami S, Koike O, Chikata M, Shiba H, Ikeuchi S, Okada Y, et al. Studies of the clinical usefulness of porous hydroxylapatite in the field of dental and oral surgery. *Keio J Med*. 1988;37(3):265-81.
467. Shirakawa M, Nomura T, Itoh T, Sakai N, Shizume M. Clinical application of hydroxyapatite ceramics APS-7 in the field of oral surgery. *Shigaku*. 1988;76(4):782-815.
468. Salyer KE, Hall CD. Porous hydroxyapatite as an onlay bone-graft substitute for maxillofacial surgery. *Plast Reconstr Surg*. 1989;84(2):236-44.
469. Hemmerle J, Leize M, Voegel JC. Long-term behaviour of a hydroxyapatite/collagen-glycosaminoglycan biomaterial used for oral surgery: a case report. *J Mater Sci Mater Med*. 1995;6(6):360-6.
470. Kent JN, Quinn JH, Zide MF. Alveolar ridge augmentation using nonresorbable hydroxylapatite with or without autogenous cancellous bone. *J Oral Maxillofac Surg*. 1983;41(10):629-42.
471. Holmes RE, Hagler HK. Porous hydroxylapatite as a bone graft substitute in mandibular contour augmentation: a histometric study. *J Oral Maxillofac Surg*. 1987;45(5):421-9.
472. Wittkamp AR. Augmentation of the maxillary alveolar ridge with hydroxylapatite and fibrin glue. *J Oral Maxillofac Surg*. 1988;46(11):1019-21.
473. Friedman CD, Costantino PD, Takagi S, Chow LC. BoneSource™ hydroxyapatite cement: a novel biomaterial for craniofacial skeletal tissue engineering and reconstruction. *J Biomed Mater Res*. 1998;43(4):428-32.
474. Ylinen P, Suuronen R, Taurio R, Törmälä P, Rokkanen P. Use of hydroxylapatite/ polymer-composite in facial bone augmentation. An experimental study. *Int J Oral Maxillofac Surg*. 2002;31(4):405-9.
475. Hallman M, Hedin M, Sennerby L, Lundgren S. A prospective 1-year clinical and radiographic study of implants placed after maxillary sinus floor augmentation with bovine hydroxyapatite and autogenous bone. *J Oral Maxillofac Surg*. 2002;60(3):277-84.
476. Wiltfang J, Kessler P, Buchfelder M, Merten HA, Neukam FW, Rupprecht S. Reconstruction of skull bone defects using the hydroxyapatite cement with calvarial split transplants. *J Oral Maxillofac Surg*. 2004;62(1):29-35.
477. Zecha PJ, Schortinghuis J, van der Wal JE, Nagursky H, van den Broek KC, Sauerbier S, et al. Applicability of equine hydroxyapatite collagen (eHAC) bone blocks for lateral augmentation of the alveolar crest. A histological and histomorphometric analysis in rats. *Int J Oral Maxillofac Surg*. 2011;40(5):533-42.
478. Scarano A, Degidi M, Perrotti V, Piattelli A, Iezzi G. Sinus augmentation with phycogene hydroxyapatite: histological and histomorphometrical results after 6 months in humans. A case series. *Oral Maxillofac Surg*. 2012;16:41-5.
479. Mercier P. Failures in ridge reconstruction with hydroxyapatite. Analysis of cases and methods for surgical revision. *Oral Surg Oral Med Oral Pathol Oral Radiol Endod*. 1995;80(4):389-93.
480. Redondo LM, García Cantera JM, Hernández AV, Puerta CV. Effect of particulate porous hydroxyapatite on osteoinduction of demineralized bone autografts in experimental reconstruction of the rat mandible. *Int J Oral Maxillofac Surg*. 1995;24(6):445-8.
481. Mercier P, Bellavance F, Cholewa J, Djokovic S. Long-term stability of atrophic ridges reconstructed with hydroxylapatite: a prospective study. *J Oral Maxillofac Surg*. 1996;54(8):960-8.
482. Lew D1, Farrell B, Bardach J, Keller J. Repair of craniofacial defects with hydroxyapatite cement. *J Oral Maxillofac Surg*. 1997;55(12):1441-9.
483. Mishra S, Singh RK, Mohammad S, Pradhan R, Pal US. A comparative evaluation of decalcified freeze dried bone allograft, hydroxyapatite and their combination in osseous defects of the jaws. *J Maxillofac Oral Surg*. 2010;9(3):236-40.
484. Zhang JC, Lu HY, Lv GY, Mo AC, Yan YG, Huang C. The repair of critical-size defects with porous hydroxyapatite/polyamide nanocomposite: an experimental study in rabbit mandibles. *Int J Oral Maxillofac Surg*. 2010;39(5):469-77.
485. Sverzut AT, Rodrigues DC, Lauria A, Armando RS, de Oliveira PT, Moreira RW. Clinical, radiographic, and histological analyses of calcium phosphate cement as filling material in maxillary sinus lift surgery. *Clin Oral Implant Res*. 2015;26:633-8.
486. Wolford LM, Wardrop RW, Hartog JM. Coralline porous hydroxylapatite as a bone graft substitute in orthognathic surgery. *J Oral Maxillofac Surg*. 1987;45(12):1034-42.
487. Moenning JE, Wolford LM. Coralline porous hydroxyapatite as a bone graft substitute in orthognathic surgery: 24-month follow-up results. *Int J Adult Orthod Orthognathic Surg*. 1989;4(2):105-17.
488. Rosen HM, Ackerman JL. Porous block hydroxyapatite in orthognathic surgery. *Angle Orthod*. 1991;61(3):185-91.
489. Cottrell DA, Wolford LM. Long-term evaluation of the use of coralline hydroxyapatite in orthognathic surgery. *J Oral Maxillofac Surg*. 1998;56(8):935-41.
490. Wolford LM, Freitas RZ. Porous block hydroxyapatite as a bone graft substitute in the correction of jaw and craniofacial deformities. *BUMC Proc*. 1999;12(4):243-6.
491. Larsen HD, Finger IM, Guerra LR, Kent JN. Prosthodontic management of the hydroxylapatite denture patient: a preliminary report. *J Prost Dent*. 1983;49(4):461-70.
492. Larsen HD, Guerra LR, Finger IM. Hydroxylapatite: prosthodontic clinical

- considerations. *Compend Contin Educ Dent*. 1984;5(10):786-90.
493. Balshi TJ. Preventive durapatite ridge augmentation for esthetic fixed prosthodontics. *J Prost Dent*. 1987;58(3):266-70.
 494. Nelson DR, von Gonten AS. Prosthodontic management of the hydroxylapatite-augmented ridge. *Gen Dent*. 1988;36(4):315-9.
 495. Tanaka O, Hirai T, Murase H. Prosthodontic analysis in mandibular ridge augmentation with hydroxyapatite particle. Part I. Evaluation of alveolar ridge form. *Nippon Hotetsu Shika Gakkai Zasshi*. 1988;32(6):1345-57.
 496. Zeltser C, Masella R, Cholewa J, Mercier P. Surgical and prosthodontic residual ridge reconstruction with hydroxyapatite. *J Prosthet Dent*. 1989;62(4):441-8.
 497. Tanaka O, Hirai T, Murase H. Prosthodontic analysis in mandibular ridge augmentation with hydroxyapatite particle. 2. Evaluation of masticatory function and overall assessment. *Nippon Hotetsu Shika Gakkai Zasshi*. 1989;33(6):1466-76.
 498. Denissen HW, Kalk W, Veldhuis AA, van den Hooff A. Eleven-year study of hydroxyapatite implants. *J Prosthet Dent*. 1989;61(6):706-12.
 499. Ogiso M, Tabata T, Kuo PT, Borgese D. A histologic comparison of the functional loading capacity of an occluded dense apatite implant and the natural dentition. *J Prost Dent*. 1994;71(6):581-8.
 500. Ngoc NT, Mukohyama H, Hlaing S, Kondo H, Inoue T, Taniguchi H, et al. Prosthodontic treatment for patients with large mandibular defects; porous hydroxyapatite grafts. *J Med Dent Sci*. 1997;44(4):93-8.
 501. Sung YM, Shin YK, Ryu JJ. Preparation of hydroxyapatite/zirconia bioceramic nanocomposites for orthopaedic and dental prosthesis applications. *Nanotechnol*. 2007;18(6):065602.
 502. Meffert RM, Thomas JR, Hamilton KM, Brownstein CN. Hydroxylapatite as an alloplastic graft in the treatment of human periodontal osseous defects. *J Periodontol*. 1985;56(2):63-73.
 503. Stahl SS, Froum SJ. Histologic and clinical responses to porous hydroxylapatite implants in human periodontal defects. Three to twelve months postimplantation. *J Periodontol*. 1987;58(10):689-95.
 504. Bowen JA, Mellonig JT, Gray JL, Towle HT. Comparison of decalcified freeze-dried bone allograft and porous particulate hydroxyapatite in human periodontal osseous defects. *J Periodontol*. 1989;60(12):647-54.
 505. Mora F, Ouhayoun JP. Clinical evaluation of natural coral and porous hydroxyapatite implants in periodontal bone lesions: results of a 1-year follow-up. *J Clin Periodontol*. 1995;22:877-84.
 506. Brown GD1, Mealey BL, Nummikoski PV, Bifano SL, Waldrop TC. Hydroxyapatite cement implant for regeneration of periodontal osseous defects in humans. *J Periodontol*. 1998;69(2):146-57.
 507. Yukna RA, Callan DP, Krauser JT, Evans GH, Aichelmann-Reidy ME, Moore K, et al. Multi-center clinical evaluation of combination anorganic bovine-derived hydroxyapatite matrix (ABM)/cell binding peptide (P-15) as a bone replacement graft material in human periodontal osseous defects. 6-month results. *J Periodontol*. 1998;69(6):655-63.
 508. Morris HF, Ochi S, Spray JR, Olson JW. Periodontal-type measurements associated with hydroxyapatite-coated and non-HA-coated implants: uncovering to 36 months. *Ann Periodontol*. 2000;5:56-67.
 509. Okuda K, Tai H, Tanabe K, Suzuki H, Sato T, Kawase T, et al. Platelet-rich plasma combined with a porous hydroxyapatite graft for the treatment of intrabony periodontal defects in humans: a comparative controlled clinical study. *J Periodontol*. 2005;76(6):890-8.
 510. Okuda K, Yamamiya K, Kawase T, Mizuno H, Ueda M, Yoshie H. Treatment of human infrabony periodontal defects by grafting human cultured periosteum sheets combined with platelet-rich plasma and porous hydroxyapatite granules: case series. *J Int Acad Periodontol*. 2009;11(3):206-13.
 511. Kawase T, Okuda K, Kogami H, Nakayama H, Nagata M, Sato T, et al. Human periosteum-derived cells combined with superporous hydroxyapatite blocks used as an osteogenic bone substitute for periodontal regenerative therapy: an animal implantation study using nude mice. *J Periodontol*. 2010;81(3):420-7.
 512. Trombelli L, Simonelli A, Pramstraller M, Wikesjö UM, Farina R. Single flap approach with and without guided tissue regeneration and a hydroxyapatite biomaterial in the management of intraosseous periodontal defects. *J Periodontol*. 2010;81(9):1256-63.
 513. Heinz B, Kasaj A, Teich M, Jepsen S. Clinical effects of nanocrystalline hydroxyapatite paste in the treatment of intrabony periodontal defects: a randomized controlled clinical study. *Clin Oral Invest*. 2010;14(5):525-31.
 514. Jung UW, Lee JS, Park WY, Cha JK, Hwang JW, Park JC, et al. Periodontal regenerative effect of a bovine hydroxyapatite/collagen block in one-wall intrabony defects in dogs: a histometric analysis. *J Periodontol*. 2011;41(6):285-92.
 515. Horváth A, Stavropoulos A, Windisch P, Lukács L, Gera I, Sculean A. Histological evaluation of human intrabony periodontal defects treated with an unsintered nanocrystalline hydroxyapatite paste. *Clin Oral Invest*. 2013;17(2):423-30.
 516. Yoshinuma N, Sato S, Fukuyama T, Murai M, Ito K. Ankylosis of nonresorbable hydroxyapatite graft material as a contributing factor in recurrent periodontitis. *Int J Periodontics Restorative Dent*. 2012;32(3):331-6.
 517. Shirai Y, Okuda K, Kubota T, Wolff LF, Yoshie H. The comparative effectiveness of granules or blocks of superporous hydroxyapatite for the treatment of intrabony periodontal defects. *Open J Stomatol*. 2012;2(2):81-7.
 518. Machot EA, Hoffmann T, Lorenz K, Khalili I, Noack B. Clinical outcomes after treatment of periodontal intrabony defects with nanocrystalline hydroxyapatite (Ostim) or enamel matrix derivatives (Emdogain): a randomized controlled clinical trial. *BioMed Res Int*. 2014;2014:786353.
 519. Madhumathi K, Kumar TS. Regenerative potential and anti-bacterial activity of tetracycline loaded apatitic nanocarriers for the treatment of periodontitis. *Biomed Mater*. 2014;9(3):035002.
 520. Pradeep AR, Bajaj P, Rao NS, Agarwal E, Naik SB. Platelet-rich fibrin combined with a porous hydroxyapatite graft for the treatment of 3-wall intrabony defects in chronic periodontitis: a randomized controlled clinical trial. *J Periodontol*. 2017;88:1288-96.
 521. Vaca-Cornejo F, Reyes HM, Jiménez SH, Velázquez RA, Jiménez JM. Pilot study using a chitosan-hydroxyapatite implant for guided alveolar bone growth in patients with chronic periodontitis. *J Funct Biomater*. 2017;8(3):29.
 522. Madhumathi K, Rekha LJ, Kumar TS. Tailoring antibiotic release for the treatment of periodontal infrabony defects using bioactive gelatin-alginate/apatite nanocomposite films. *J Drug Deliv Sci Technol*. 2018;43:57-64.
 523. Dorozhkin SV. Dissolution mechanism of calcium apatites in acids: A review of literature. *World J Methodol*. 2012;2:1-17.
 524. Xu HH, Moreau JL. Dental glass-reinforced composite for caries inhibition: calcium phosphate ion release and mechanical properties. *J Biomed Mater Res B Appl Biomater*. 2010;92(2):332-40.
 525. Shen Q, Sun J, Wu J, Liu C, Chen F. An in vitro investigation of the mechanical-chemical and biological properties of calcium phosphate/calcium silicate/bismutite cement for dental pulp capping. *J Biomed Mater Res B Appl Biomater*. 2010;94:141-8.
 526. Xu HH1, Weir MD, Sun L. Calcium and phosphate ion releasing composite: effect of pH on release and mechanical properties. *Dent Mater*. 2009;25(4):535-42.
 527. Chen YZ, Lü XY, Liu GD. A novel root-end filling material based on hydroxyapatite, tetracalcium phosphate and polyacrylic acid. *Int Endod J*. 2013;46:556-64.
 528. Daculsi G, Weiss P, Boulter JM, Gauthier O, Millot F, Aguado E. Biphasic calcium phosphate/hydrolyzable polymer composites: a new concept for bone and dental substitution biomaterials. *Bone*. 1999;25(2 Suppl):59S-61S.
 529. Weiss P, Layrolle P, Clergeau LP, Enckel B, Pilet P, Amouriq Y, et al. The safety and efficacy of an injectable bone substitute in dental sockets demonstrated in a human clinical trial. *Biomaterials*. 2007;28(22):3295-305.
 530. Struillou X, Boutigny H, Badran Z, Fella BH, Gauthier O, Sourice S, et al. Treatment of periodontal defects in dogs using an injectable composite hydrogel/

- biphasic calcium phosphate. *J Mater Sci Mater Med*. 2011;22(7):1707-17.
531. Ellinger RF, Nery EB, Lynch KL. Histological assessment of periodontal osseous defects following implantation of hydroxyapatite and biphasic calcium phosphate ceramics: a case report. *Int J Periodontics Restorative Dent*. 1986;6(3):22-33.
 532. Nery EB, Eslami A, van Swol RL. Biphasic calcium phosphate ceramic combined with fibrillar collagen with and without citric acid conditioning in the treatment of periodontal osseous defects. *J Periodontol*. 1990;61(3):166-72.
 533. Nery EB, Lee KK, Czajkowski S, Dooner JJ, Duggan M, Ellinger RF, et al. A Veterans Administration Cooperative Study of biphasic calcium phosphate ceramic in periodontal osseous defects. *J Periodontol*. 1990;61(12):737-44.
 534. Nery EB, LeGeros RZ, Lynch KL, Lee K. Tissue response to biphasic calcium phosphate ceramic with different ratios of HA/BTCP in periodontal osseous defects. *J Periodontol*. 1992;63(9):729-35.
 535. Sculean A, Windisch P, Szendrői-Kiss D, Horváth A, Rosta P, Becker J, et al. Clinical and histologic evaluation of an enamel matrix derivative combined with a biphasic calcium phosphate for the treatment of human intrabony periodontal defects. *J Periodontol*. 2008;79(10):1991-9.
 536. Shi H, Ma J, Zhao N, Chen Y, Liao Y. Periodontal regeneration in experimentally-induced alveolar bone dehiscence by an improved porous biphasic calcium phosphate ceramic in beagle dogs. *J Mater Sci Mater Med*. 2008;19(12):3515-24.
 537. Su B, Su J, Ran J, Su B. Biological performance of dental biphasic calcium phosphate ceramics modified by cold plasma. *Key Eng Mater*. 2008;368-372:1264-7.
 538. Pandit N, Gupta R, Gupta S. A comparative evaluation of biphasic calcium phosphate material and bioglass in the treatment of periodontal osseous defects: a clinical and radiological study. *J Contemp Dent Pract*. 2010;11(2):25-32.
 539. Kaushick BT, Jayakumar ND, Padmalatha O, Varghese S. Treatment of human periodontal infrabony defects with hydroxyapatite + β tricalcium phosphate bone graft alone and in combination with platelet rich plasma: a randomized clinical trial. *Indian J Dent Res*. 2011;22(4):505-10.
 540. Kim S, Jung UW, Lee YK, Choi SH. Effects of biphasic calcium phosphate bone substitute on circumferential bone defects around dental implants in dogs. *Int J Oral Maxillofac Implants*. 2011;26(2):265-73.
 541. Wagner W, Wiltfang J, Pistner H, Yildirim M, Ploder B, Chapman M, et al. Bone formation with a biphasic calcium phosphate combined with fibrin sealant in maxillary sinus floor elevation for delayed dental implant. *Clin Oral Implants Res*. 2012;23(9):1112-7.
 542. Pietruska M, Pietruski J, Nagy K, Brex M, Arweiler NB, Sculean A. Four-year results following treatment of intrabony periodontal defects with an enamel matrix derivative alone or combined with a biphasic calcium phosphate. *Clin Oral Invest*. 2012;16(4):1191-7.
 543. Wang L, Li J, Xie Y, Yang P, Liao Y, Guo G. Effect of nano biphasic calcium phosphate bioceramics on periodontal regeneration in the treatment of alveolar defects. *Adv Mater Res*. 2012;486:422-5.
 544. Seong KC, Cho KS, Daculsi C, Seris E, Daculsi G. Eight-year clinical follow-up of sinus grafts with micro-macroporous biphasic calcium phosphate granules. *Key Eng Mater*. 2014;587:321-4.
 545. Bosco J, Enkel B, Armengol V, Daculsi G, Jean A, Weiss P. Bioactive calcium phosphate material for dental endodontic treatment. Root apical deposition. *Key Eng Mater*. 2006;309-311:1157-60.
 546. Ngoc TN, Tra TN, Nguyen TH, Huynh CK, Van TV. Preparation and characterization of nano-sized biphasic calcium phosphate (BCP) for demineralized dentin infiltration in hypersensitivity treatment. *IFMBE Proc*. 2017;63:677-80.
 547. Kiba W, Imazato S, Takahashi Y, Yoshioka S, Ebisu S, Nakano T. Efficacy of polyphasic calcium phosphates as a direct pulp capping material. *J Dent*. 2010;38(10):828-37.
 548. Nevins AJ, LaPorta RF, Borden BG, Spangberg LS. Pulpotomy and partial pulpectomy procedures in monkey teeth using cross-linked collagen-calcium phosphate gel. *Oral Surg Oral Med Oral Pathol*. 1980;49:360-5.
 549. Shayegan A, Atash R, Petein M, Abbelee AV. Nanohydroxyapatite used as a pulpotomy and direct pulp capping agent in primary pig teeth. *J Dent Child (Chic)*. 2010;77(2):77-83.
 550. Yang SE, Baek SH, Lee W, Kum KY, Bae KS. In vitro evaluation of the sealing ability of newly developed calcium phosphate-based root canal sealer. *J Endod*. 2007;33(8):978-81.
 551. Khashaba RM, Chutkan NB, Borke JL. Comparative study of biocompatibility of newly developed calcium phosphate-based root canal sealers on fibroblasts derived from primary human gingiva and a mouse L929 cell line. *Int Endod J*. 2009;42(8):711-8.
 552. Bae WJ, Chang SW, Lee SI, Kum KY, Bae KS, Kim EC. Human periodontal ligament cell response to a newly developed calcium phosphate-based root canal sealer. *J Endod*. 2010;36(10):1658-63.
 553. Khashaba RM, Moussa MM, Chutkan NB, Borke JL. The response of subcutaneous connective tissue to newly developed calcium phosphate-based root canal sealers. *Int Endod J*. 2011;44(4):342-52.
 554. Bae KH1, Chang SW, Bae KS, Park DS. Evaluation of pH and calcium ion release in capseal I and II and in two other root canal sealers. *Oral Surg Oral Med Oral Pathol Oral Radiol Endod*. 2011;112(5):e23-8.
 555. Shon WJ, Bae KS, Baek SH, Kum KY, Han AR, Lee WC. Effects of calcium phosphate endodontic sealers on the behavior of human periodontal ligament fibroblasts and MG63 osteoblast-like cells. *J Biomed Mater Res B Appl Biomater*. 2012;100(8):2141-7.
 556. Tiwari S, Nandlal B. Role of synthetic hydroxyapatite in dentistry. Lap Lambert Academic Publishing: Saarbrücken, Deutschland, 2012; 90 pp.
 557. Chang SW, Lee SY, Kang SK, Kum KY, Kim EC. In vitro biocompatibility, inflammatory response, and osteogenic potential of 4 root canal sealers: Sealapex, Sankin apatite root sealer, MTA Fillapex, and iRoot SP root canal sealer. *J Endod*. 2014;40(10):1642-8.
 558. Al-Haddad A, Abu Kasim NH, Che Ab Aziz ZA. Interfacial adaptation and thickness of bioceramic-based root canal sealers. *Dent Mater J*. 2015;34(4):516-21.
 559. Portella FF, Collares FM, dos Santos LA, dos Santos BP, Camassola M, Leitune VC, et al. Glycerol salicylate-based containing a-tricalcium phosphate as a bioactive root canal sealer. *J Biomed Mater Res B Appl Biomater*. 2015;103(8):1663-9.
 560. Chang SW, Lee YK, Zhu Q, Shon WJ, Lee WC, Kum KY, et al. Comparison of the rheological properties of four root canal sealers. *Int J Oral Sci*. 2015;7:56-61.
 561. Wang L, Xie X, Li C, Liu H, Zhang K, Zhou Y, et al. Novel bioactive root canal sealer to inhibit endodontic multispecies biofilms with remineralizing calcium phosphate ions. *J Dent*. 2017;60:25-35.
 562. Cahyanto A, Megasari E, Zakaria MN, Djustiana N, Sunarso, Usri K, et al. Fabrication of carbonate apatite cement as endodontic sealer. *Key Eng Mater*. 2017;758:61-5.
 563. Shieh TM, Hsu SM, Chang KC, Chen WC, Lin DJ. Calcium phosphate cement with antimicrobial properties and radiopacity as an endodontic material. *Materials*. 2017;10(11):1256.
 564. Chau JY, Hutter JW, Mork TO, Nicoll BK. An in vitro study of furcation perforation repair using calcium phosphate cement. *J Endod*. 1997;23(9):588-92.
 565. Cherg AM, Takagi S, Chow LC. Acid neutralization capacity of a tricalcium silicate-containing calcium phosphate cement as an endodontic material. *J Res Natl Inst Stand Technol*. 2010;115(6):471-6.
 566. Ishida H1, Nahara Y, Hamada T. Dimensional accuracy of castable apatite ceramic crowns: the influence of heat treatment on dimensional changes and distortion of crowns. *J Prosthet Dent*. 1992;68(2):279-83.
 567. Hulshoff JE, Jansen JA. Initial interfacial healing events around calcium phosphate (Ca-P) coated oral implants. *Clin Oral Implant Res*. 1997;8(5):393-400.

568. Alexander F, Christian U, Stefan T, Christoph V, Reinhard G, Georg W. Long-term effects of magnetron-sputtered calcium phosphate coating on osseointegration of dental implants in non-human primates. *Clin Oral Implant Res.* 2009;20(2):183-8.
569. Junker R, Manders PJ, Wolke J, Borisov Y, Braceras I, Jansen JA. Bone reaction adjacent to microplasma-sprayed calcium phosphate-coated oral implants subjected to an occlusal load, an experimental study in the dog. *Clin Oral Implant Res.* 2011;22(2):135-42.
570. Palarie V, Bicer C, Lehmann KM, Zahalka M, Draenert FG, Kämmerer PW. Early outcome of an implant system with a resorbable adhesive calcium-phosphate coating-a prospective clinical study in partially dentate patients. *Clin Oral Invest.* 2012;16(4):1039-48.
571. Alghamdi HS, van Oirschot BA, Bosco R, van den Beucken JJ, Aldosari AA, Anil S, et al. Biological response to titanium implants coated with nanocrystals calcium phosphate or type I collagen in a dog model. *Clin Oral Implant Res.* 2013;24(5):475-83.
572. Sato I, Akizuki T, Oda S, Tsuchioka H, Hayashi C, Takasaki AA, et al. Histological evaluation of alveolar ridge augmentation using injectable calcium phosphate bone cement in dogs. *J Oral Rehabil.* 2009;36(10):762-9.
573. Meguro D, Hayakawa T, Kawasaki M, Kasai K. Shear bond strength of calcium phosphate ceramic brackets to human enamel. *Angle Orthod.* 2006;76(2):301-5.
574. Meguro D, Hayakawa T, Kasai K. Efficacy of using orthodontic adhesive resin in bonding and debonding characteristics of a calcium phosphate ceramic bracket. *Orthod Waves.* 2006;65(4):148-54.
575. Joo HJ, Park YG. Friction of calcium phosphate brackets to stainless steel wire. *Korean J Orthod.* 2007;37(5):376-85.
576. Sodagar A, Akhavan A, Hashemi E, Arab S, Pourhajibagher M, Sodagar K, et al. Evaluation of the antibacterial activity of a conventional orthodontic composite containing silver/hydroxyapatite nanoparticles. *Prog Orthod.* 2016;17:40.
577. Crubézy E, Murail P, Girard L, Bernadou JP. False teeth of the Roman world. *Nature.* 1998;391(6662):29.
578. Bobbio A. The first endosseous alloplastic implant in the history of man. *Bull Hist Dent.* 1972;20(1):1-6.
579. Lavenus S, Louarn G, Layrolle P. Nanotechnology and dental implants. *Int J Biomater.* 2010;2010:915327.
580. Khoury F, Antoun H, Missika P. Bone augmentation in oral implantology. Quintessence Publishing: Hanover Park, IL, USA, 2007; 435 pp. http://www.quintpub.com/display_detail.php?psku=B8838#.W6RvdszAM8
581. Chiapasco M, Casentini P, Zaniboni M. Bone augmentation procedures in implant dentistry. *Int J Oral Maxillofac Implants.* 2009;24 Suppl:237-59.
582. Gaetti-Jardim EC1, Santiago-Junior JF, Goiato MC, Pellizzer EP, Magro-Filho O, Jardim Junior EG. Dental implants in patients with osteoporosis: a clinical reality? *J Craniofac Surg.* 2011;22(3):1111-3.
583. Reis EC, Borges AP, Araújo MV, Mendes VC, Guan L, Davies JE. Periodontal regeneration using a bilayered PLGA/calcium phosphate construct. *Biomaterials.* 2011;32(35):9244-53.
584. Levin MP, Getter L, Cutright DE, Bhaskar SN. Biodegradable ceramic in periodontal defects. *Oral Surg Oral Med Oral Pathol.* 1974;38(3):344-51.
585. Chen FM, Zhang J, Zhang M, An Y, Chen F, Wu ZF. A review on endogenous regenerative technology in periodontal regenerative medicine. *Biomaterials.* 2010;31(31):7892-927.
586. Hayashi C, Kinoshita A, Oda S, Mizutani K, Shirakata Y, Ishikawa I. Injectable calcium phosphate bone cement provides favorable space and a scaffold for periodontal regeneration in dogs. *J Periodontol.* 2006;77(66):940-6.
587. Shirakata Y, Setoguchi T, Machigashira M, Matsuyama T, Furuichi Y, Hasegawa K, et al. Comparison of injectable calcium phosphate bone cement grafting and open flap debridement in periodontal intrabony defects: a randomized clinical trial. *J Periodontol.* 2008;79:25-32.
588. Chitsazi MT, Shirmohammadi A, Faramarzi M, Pourabbas R, Rostamzadeh AN. A clinical comparison of nano-crystalline hydroxyapatite (Ostim) and autogenous bone graft in the treatment of periodontal intrabony defects. *Med Oral Patol Oral Cir Bucal.* 2011;16(3):448-53.
589. Shirakata Y, Taniyama K, Yoshimoto T, Takeuchi N, Noguchi K. Effect of bone swaging with calcium phosphate bone cement on periodontal regeneration in dogs. *Oral Surg Oral Med Oral Pathol Oral Radiol.* 2012;114(1):35-42.
590. D'Lima JP, Paul J, Palathingal P, Varma BR, Bhat M, Mohanty M. Histological and histometrical evaluation of two synthetic hydroxyapatite based biomaterials in the experimental periodontal defects in dogs. *J Clin Diagn Res.* 2014;8(9):ZC52-5.
591. Bansal R, Patil S, Chaubey K, Thakur R, Goyal P. Clinical evaluation of hydroxyapatite and β -tricalcium phosphate composite graft in the treatment of intrabony periodontal defect: a clinico-radiographic study. *J Indian Soc Periodontol.* 2014;18(5):610-7.
592. Dan H, Vaquette C, Fisher AG, Hamlet SM, Xiao Y, Huttmacher DW, et al. The influence of cellular source on periodontal regeneration using calcium phosphate coated polycaprolactone scaffold supported cell sheets. *Biomaterials.* 2014;35:113-22.
593. Nevins AJ, Cymerman JJ. Revitalization of open apex teeth with apical periodontitis using a collagen-hydroxyapatite scaffold. *J Endod.* 2015;41(6):966-73.
594. Elgendy EA, Shady TE. Clinical and radiographic evaluation of nanocrystalline hydroxyapatite with or without platelet-rich fibrin membrane in the treatment of periodontal intrabony defects. *J Indian Soc Periodontol.* 2015;19:61-5.
595. García D, García L, Pérez MP, Suarez M, Delgado JA, García R, et al. Filling of post-extraction dental socket with hydroxyapatite granules APAFILL-G™. *Key Eng Mater.* 2001;192-195:925-8.
596. Checchi V, Savarino L, Montevicchi M, Felice P, Checchi L. Clinical-radiographic and histological evaluation of two hydroxyapatites in human extraction sockets: a pilot study. *Int J Oral Maxillofac Surg.* 2011;40(5):526-32.
597. Lee JS, Wikesjö UM, Jung UW, Choi SH, Pippig S, Siedler M, et al. Periodontal wound healing/regeneration following implantation of recombinant human growth/differentiation factor-5 in a β -tricalcium phosphate carrier into one-wall intrabony defects in dogs. *J Clin Periodontol.* 2010;37(4):382-9.
598. Emerton KB, Drapeau SJ, Prasad H, Rohrer M, Roffe P, Hopper K, et al. Regeneration of periodontal tissues in non-human primates with rhGDF-5 and beta-tricalcium phosphate. *J Dent Res.* 2011;90(12):1416-21.
599. Ridgway HK, Mellonig JT, Cochran DL. Human histologic and clinical evaluation of recombinant human platelet-derived growth factor and beta-tricalcium phosphate for the treatment of periodontal intraosseous defects. *Int J Periodontics Restorative Dent.* 2008;28(2):171-9.
600. Jayakumar A, Rajababu P, Rohini S, Butchibabu K, Naveen A, Reddy PK, et al. Multi-centre, randomized clinical trial on the efficacy and safety of recombinant human platelet-derived growth factor with β -tricalcium phosphate in human intraosseous periodontal defects. *J Clin Periodontol.* 2011;38(2):163-72.
601. Sorensen RG, Wikesjö UM, Kinoshita A, Wozney JM. Periodontal repair in dogs: Evaluation of a bioresorbable calcium phosphate cement (Ceredex™) as a carrier for rhBMP-2. *J Clin Periodontol.* 2004;31(9):796-804.
602. Pietruska M, Skurska A, Pietruski J, Dolinska E, Arweiler N, Milewski R, et al. Clinical and radiographic evaluation of intrabony periodontal defect treatment by open flap debridement alone or in combination with nanocrystalline hydroxyapatite bone substitute. *Ann Anat.* 2012;194(6):533-7.
603. Elangovan S, Jain S, Tsai PC, Margolis HC, Amiji M. Nano-sized calcium phosphate particles for periodontal gene therapy. *J Periodontol.* 2013;84(1):117-25.
604. Bayani M, Torabi S, Shahnaz A, Pourali M. Main properties of nanocrystalline hydroxyapatite as a bone graft material in treatment of periodontal defects. A review of literature. *Biotechnology & Biotechnological Equipment.* 2017;31(2):215-20.
605. Sepantafar M, Mohammadi H, Maheronnaghsh R, Tayebi L, Baharvand H. Single phased silicate-containing calcium phosphate bioceramics: promising biomaterials for periodontal repair. *Ceram Int.* 2018;44(10):11003-12.

606. Mucositis. Wikipedia. (accessed in July 2018).
607. Papas A. Calcium phosphate mouth rinse for preventing oral mucositis. *Community Oncology*. 2008;5:171-2.
608. Markiewicz M, Dzierzak-Mietla M, Frankiewicz A, Zielinska P, Koclega A, Kruszelnicka M, et al. Treating oral mucositis with a supersaturated calcium phosphate rinse: comparison with control in patients undergoing allogeneic hematopoietic stem cell transplantation. *Support Care Cancer*. 2012;20(9):2223-9.
609. Miyamoto CT, Wobb J, Micaily B, Li S, Achary MP. A retrospective match controlled study of supersaturated calcium phosphate oral rinse vs. supportive care for radiation induced oral mucositis. *J Cancer Ther*. 2012;3(5):630-6.
610. Quinn B. Efficacy of a supersaturated calcium phosphate oral rinse for the prevention and treatment of oral mucositis in patients receiving high-dose cancer therapy: a review of current data. *Eur J Cancer Care*. 2013;22(5):564-79.
611. Svanberg A, Ohrn K, Birgegard G. Caphosol® mouthwash gives no additional protection against oral mucositis compared to cryotherapy alone in stem cell transplant. A pilot study. *Eur J Oncol Nurs*. 2015;19:50-3.
612. Bhatt N, Naithani R, Gupta SK. Supersaturated calcium phosphate rinse in prevention and treatment of mucositis in patients undergoing hematopoietic stem cell transplant. *Exp Clin Transplant*. 2017;15(5):567-70.
613. Nyman S, Lindhe J, Karring T, Rylander H. New attachment following surgical treatment of human periodontal disease. *J Clin Periodontol*. 1982;9(4):290-6.
614. Chai Y, Slavkin HC. Prospects for tooth regeneration in the 21st century: a perspective. *Microsc Res Tech*. 2003;60(5):469-79.
615. Hu B, Nadiri A, Kuchler-Bopp S, Perrin-Schmitt F, Peters H, Lesot H. Tissue engineering of tooth crown, root, and periodontium. *Tissue Eng*. 2006;12(8):2069-75.
616. Duailibi SE, Duailibi MT, Zhang W, Asrican R, Vacanti JP, Yelick PC. Bioengineered dental tissues grown in the rat jaw. *J Dent Res*. 2008;87(8):745-50.
617. Ikeda E, Morita R, Nakao K, Ishida K, Nakamura T, Takano-Yamamoto T, et al. Fully functional bioengineered tooth replacement as an organ replacement therapy. *Proc Natl Acad Sci USA*. 2009;106(32):13475-80.
618. Horst OV, Chavez MG, Jheon AH, Desai T, Klein OD. Stem cell and biomaterials research in dental tissue engineering and regeneration. *Dent Clin North Am*. 2012;56(3):495-520.
619. Yelick PC, Vacanti JP. Bioengineered teeth from tooth bud cells. *Dent Clin North Am*. 2006;50(2):191-203.
620. Nakao K, Morita R, Saji Y, Ishida K, Tomita Y, Ogawa M, et al. The development of a bioengineered organ germ method. *Nat Methods*. 2007;4(3):227-30.
621. Yu J1, Wang Y, Deng Z, Tang L, Li Y, Shi J, et al. Odontogenic capability: bone marrow stromal stem cells versus dental pulp stem cells. *Biol Cell*. 2007;99(8):465-74.
622. An S, Ling J, Gao Y, Xiao Y. Effects of varied ionic calcium and phosphate on the proliferation, osteogenic differentiation and mineralization of human periodontal ligament cells in vitro. *J Periodontol Res*. 2012;47(3):374-82.
623. Kitamura C, Nishihara T, Terashita M, Tabata Y, Washio A. Local regeneration of dentin-pulp complex using controlled release of fgf-2 and naturally derived sponge-like scaffolds. *Int J Dent*. 2012;2012:190561.
624. Zuolin J, Hong Q, Jiali T. Dental follicle cells combined with beta-tricalcium phosphate ceramic: a novel available therapeutic strategy to restore periodontal defects. *Med Hypotheses*. 2010;75(6):669-70.
625. Zheng L, Yang F, Shen H, Hu X, Mochizuki C, Sato M, et al. The effect of composition of calcium phosphate composite scaffolds on the formation of tooth tissue from human dental pulp stem cells. *Biomaterials*. 2011;32(29):7053-9.
626. Liao F, Chen Y, Li Z, Wang Y, Shi B, Gong Z, et al. A novel bioactive three-dimensional β -tricalcium phosphate/chitosan scaffold for periodontal tissue engineering. *J Mater Sci Mater Med*. 2010;21(2):489-96.
627. Markopoulou CE1, Dereka XE, Vavouraki HN, Pepelassi EE, Mamalis AA, Karoussis IK, et al. Effect of rhTGF- β 21 combined with bone grafts on human periodontal cell differentiation. *Growth Factors*. 2011;29:14-20.
628. Liu HC, E LL, Wang DS, Su F, Wu X, Shi ZP, et al. Reconstruction of alveolar bone defects using bone morphogenetic protein 2 mediated rabbit dental pulp stem cells seeded on nano-hydroxyapatite/collagen/poly(L-lactide). *Tiss Eng A*. 2011;17(19-20):2417-33.
629. Goh BT, Chanchareonsook N, Tideman H, Teoh SH, Chow JK, Jansen JA. The use of a polycaprolactone-tricalcium phosphate scaffold for bone regeneration of tooth socket facial wall defects and simultaneous immediate dental implant placement in *Macaca fascicularis*. *J Biomed Mater Res A*. 2014;102(5):1379-88.
630. Ohara T, Itaya T, Usami K, Ando Y, Sakurai H, Honda MJ, et al. Evaluation of scaffold materials for tooth tissue engineering. *J Biomed Mater Res A*. 2010;94(3):800-5.
631. Tonomura A, Mizuno D, Hisada A, Kuno N, Ando Y, Sumita Y, et al. Differential effect of scaffold shape on dentin regeneration. *Ann Biomed Eng*. 2010;38(4):1664-71.
632. Yang X, Yang F, Walboomers XF, Bian Z, Fan M, Jansen JA. The performance of dental pulp stem cells on nanofibrous PCL/gelatin/nHA scaffolds. *J Biomed Mater Res A*. 2010;93(1):247-57.
633. Viale-Bouroncle S, Bey B, Reichert TE, Schmalz G, Morszeck C. β -tricalcium-phosphate stimulates the differentiation of dental follicle cells. *J Mater Sci Mater Med*. 2011;22(7):1719-24.